



SINCLAIR CATTLE
COMPANY, INC.

ANNUAL PRODUCTION SALE

MARCH 25, 2023 • 1:00 PM
BUFFALO, WYOMING



Original N-Bar Genetics Working For You

Staying true
to the Legacy



Original N-Bar Genetics Working For You

Staying true
to the Legacy

Dear Friends,

It is our pleasure to invite you to our 19th Annual Bull Sale at Buffalo Livestock Marketing in Buffalo, Wyoming on Saturday March 25, 2023. We very much appreciate your interest in our program and the effort you make to attend our sale. The bulls we are offering on sale day will be the top end of 250 bulls we weaned in September. These bulls have endured a strict culling process for fertility, structural soundness, and genetic merit, which continues right up to the time they walk into the sale ring. We follow this same process in evaluating our cow herd. *Staying True to The Legacy* is more than a slogan to the Sinclair team. It is our mission to keep building on Emulation genetics that were started back in the 1950's. It's an honor and our job as stewards of these genetics to ensure the quality lives on.

We continue to test our own *line bred sires* in our herd. We have also recently introduced some proven herd sires from outside our genetic line: KG Justified and Connealy Spur. We are confident these additions along with two Junior herd sires, Reisig Longmire, and Connealy Gary will add additional quality to our program. The fundamental objective at Sinclair Cattle Company remains the same: to produce line bred, functional and easy calving Angus seed stock that will enhance the pure bred and commercial livestock industries.

The Bulls were fed at Veltkamp feedlot on a high roughage diet. Phil always does a great job for us. They will be there until Thursday, March 23rd at which time we will move them to Buffalo, Wyoming. You are more than welcome to look at them at the feedlot or at the auction barn where the bulls will be penned and ready for viewing late Thursday afternoon.

The commercial heifers are the middle cut out of the registered cows. They will remain at the feedlot in Manhattan, MT and will be shipped from there after the sale. Arrangements can be made with Phil Veltkamp to have him AI the heifers at the buyers cost. Please make AI arrangements through Logan Baker. A video of the heifers will be available on the SCC web page. We are confident these heifers will make excellent cows.

Sinclair Cattle Company is working hard to earn your business by making the improvements our customers have discussed with us. We offer quality bulls that exhibit profit building traits and predictable performance to help enhance your genetic program.

We appreciate your business and look forward to seeing you on Sale Day. Stop by anytime; Visitors are always welcome.

Sincerely,

J Duncan Smith, Owner

11:30 am Lunch | 1:00 pm Sale Begins

ANNUAL PRODUCTION SALE

MARCH 25, 2023 • 1:00 PM
BUFFALO LIVESTOCK MARKETING
BUFFALO, WYOMING

Selling **132 Yearling Angus BULLS**
60 Reputation Commercial Open
Replacement Heifers

FRED SAUNDERS
406-788-9331

LOGAN BAKER
307-254-1477

LANCE CLINE
785-564-1744

STEVE BLANKLEY II
240-625-5415

MIKE BAZZLE
540-421-7411

STAYING TRUE TO THE LEGACY • MATERNAL | PERFORMANCE | LONGEVITY

SALE INFORMATION

AUCTIONEER

Roger Jacobs 406-698-7686

SALE DAY DIRECT BID

SINCLAIR REPRESENTATIVE PHONES

Fred Saunders 406-788-9331
 Logan Baker 307-254-1477
 Lance Cline 785-564-1744
 Steve Blankley II 240-625-5415
 Mike Bazzle 540-421-7411

BUFFALO LIVESTOCK MARKETING

Sale Day Phone 307-684-0789

LIVESTOCK PUBLICATION REPS

Kurt Kangas 406-254-7576 American Angus Association
 Curt Cox 307-630-4604 Wyoming Livestock Roundup
 Alan Sears 970-396-752 Western Ag Reporter
 Brady Williams 605-580-5315 TriState Livestock News
 Jeff Thomas 406-581-8859 Prairie Star
 Devin Murnin 406-696-1502 Western Livestock Journal

BIDS

Buyer may call or send their bids to any of the sale professionals listed above or directly to Sinclair Cattle Company. Complete satisfaction is guaranteed for cattle purchased sight unseen as well as all bulls sold.

SALE LOCATION

Buffalo Livestock Marketing, Buffalo Wyoming

VIDEOS

Videos of the sale offering available at www.sinclaircattle.com and dvauction.com

TERMS & CONDITIONS

Cash. All cattle sell under the standard terms & conditions as adopted by the American Angus Association printed in the back of this book.

INSURANCE

Mortality Insurance representatives will be available sale day.

SALE BLOCK

All announcements from the sale block on sale day take precedence over material printed in this sale book.

SALE ORDER

Cattle will sell in catalog order. Updates will be posted on website and social media. This catalog represents the results of careful selection of this sale offering. We invite you to bid with confidence.

FOOD

Coffee and donuts in the morning. A beef lunch provided starting at 11:30 am. Snacks and refreshments available Friday while viewing.

CONVENIENCE BUYING

Online Bids

DV Auction & Cattle USA

See inside back cover for details

Donation Lot is 100% giving to 4H and FFA

scan this code



This is where you will be able to view videos when they are ready.

HOTELS:

These are all within a block or within walking distance of one another.

Hampton Inn and Suites 307-684-8899
 Holiday Inn Express 307-684-9900
 SureStay Plus Hotel 307-684-9564
 The Super 8 307-684-2531
 Buffalo Inn 307-684-7000
 Rodeway Inn 307-684-5505

Downtown

The Historic Occidental Hotel 307-684-0451
 The Big Horn Motel 307-684-7822
 The Mansion House Inn 307-684-2218

Visit buffalowyo.com to view places to dine and tour in and around Buffalo, Wyoming.



Special room rates have been arranged. Call 307-684-8899 by 3/21/23 to reserve your room.

AIRPORTS SERVING BUFFALO, WYOMING:

Johnson County Airport, Buffalo 307-684-9672
 Campbell County Airport, Gillette 307-686-1042
 Sheridan County Airport, Sheridan 307-674-4222
 Natrona County Airport, Casper 307-472-6688
 Billings Logan International, 169 miles 2hr 40 min. drive

EPDS

EPDs current as of 2/25/23

FREE DELIVERY TERMS

- A **\$100/head discount** will be given if buyer hauls on sale day.
- Sinclair Cattle Company offers free delivery in Wyoming and bordering states to a central stockyard point or dropoff location on all bull purchases. Beyond that, bulls will be delivered at cost.
- Sinclair Cattle Company will help coordinate delivery and keep costs as low as possible. The trucking bill will come from Sinclair Cattle Company.
- For our customers from the Northeast and East, cattle will be delivered to Sinclair Cattle Company's Warfordsburg, PA location and delivery will be coordinated from there. Call Steve Blankley II for further details.
- Bulls will be delivered as promptly as possible.

GUARANTEE

Guaranteed customer satisfaction, with a "No Holds Barred" guarantee on the bulls through the first breeding season. Breeding season consists of 90 days from turnout. Contact a Sinclair Cattle Company Representative as soon as possible after finding an injury. We recommend Mortality Insurance against death.

VOLUME DISCOUNTS

5% discount on 5 or more bulls and 10% discount on 10 or more bulls

RETAINING INTEREST

Sinclair Cattle Company is retaining one-third semen revenue sharing interest in each individual bull in the sale unless otherwise stated. **Retaining ½ interest in lots 1, 3, 7, 12, and 24.**



SINCLAIR JUSTIFIED K555

REG: 20553718 | DOB: 02/16/22 | TATTOO: K555

Connealy Judgment
KG Justified 3023 17707279#
 KG Miss Magic 1443

Connealy Consensus 7229#
 Entrine of Conanga 9876#
 Sitz Wisdom 481T#
 KG Miss Magic 3528

N Bar Emulation EXT#
Sinclair Lady 0X13 3M18 20037065
 Sinclair Lady 3M18 4465#

Emulation N Bar 5522#
 N Bar Primrose 2424
 N Bar Moderation 9957
 Ideal 4465 of 6807 4286

Individual Performance					EPD's				
BW	ADJ. WW	WR	ADJ. YW	YR	CE	BW	WW	MILK	YW
76	671	124	1161	114	7	-3	61	28	102
Individual Performance				Mat	\$ Values				
ADG	Act. IMF	REA/100 lbs	\$EN	\$M	\$W	\$F	\$G	\$B	
3.60	2.97	1.12	-11	72	61	70	41	111	
Dam's Production WR: 1 @ 124 YR: 1 @ 114									

K555 is a once-in-a-lifetime opportunity kind of bull with excellent herdsire credentials beginning with his rock-solid maternal heritage. A standout since day one and at weaning, K555 continued to jump through all the hoops recording a 124 WR and a 114 YR with a 113 RE ratio. His 76 lb. bw suggests he should be an ideal "go to" heifer sire. 555 is a high volumed, thick-ended bull who is smooth-shouldered and neat-fronted. His dam, 0X13, is a magnificent EXT daughter that will impress the most astute cattleman. The grandam, 3M18, was a featured donor for both Sinclair and ZWT in Tennessee for many years. The Ideal 4465 cow family needs no introduction as volumes can be written on their success in the Angus breed. This is one unique breeding tool whose dam offers an outcross to many of today's popular bloodlines. Sinclair Cattle Co is **retaining one-half interest** in K555, and will work with the buyer to have semen collected prior to delivery.

**BIG TIME ONE
 OF A KIND
 HERDSIRE!**



THE ICONIC IDEAL 4465, THE SINCLAIR FOUNDATION LADY AND THE THIRD DAM OF K555.



SINCLAIR LADY 3M18 4465, THE POWERFUL FOUNDATION GRANDAM OF K555.



SINCLAIR JUSTIFIED K290

REG: *20400550 | DOB: 03/04/22 | TATTOO: K290

Connealy Judgment
KG Justified 3023 17707279#
 KG Miss Magic 1443

Connealy Consensus 7229#
 Entrine of Conanga 9876#
 Sitz Wisdom 481T#
 KG Miss Magic 3528

Sinclair X-Plus 3XX20
Sinclair Primrose 5PX13 2XR4# 18152673
 Sinclair Primrose 2XR4 0A14

Sinclair Emulation XXP#
 Sinclair Primrose 5R47 D011
 Sinclair Emulation X 8X17
 Sinclair Primrose 0A14 8R5

Individual Performance					EPD's				
BW	ADJ. WW	WR	ADJ. YW	YR	CED	BW	WW	MILK	YW
83	690	114	1154	112	9	-1.2	57	29	100
Individual Performance				Mat	\$ Values				
ADG	Act. IMF	REA/100 lbs	\$EN	\$M	\$W	\$F	\$G	\$B	\$C
3.04	3.35	1.02	-10	81	58	74	48	122	

Dam's Production WR: 6 @ 107 YR: 2 @ 109

An excellent calving ease herdsire prospect that offers outstanding performance is what K590 is all about. Check out his outstanding BW, WW, YW, IMF, and REA ratios. His dam is a model XXP daughter with an excellent disposition and is easy fleshing.

**TOP SHELF
 CURVE BENDER!**

REF SIRE

KG JUSTIFIED 3023#

REG: 17707279 | DOB: 1/21/2013 | TATTOO: 3023

KG Miss Magic 1443#
Connealy Judgment 17031468
 Entrine of Conanga 9876#

Connealy Consensus#
 Blue Lilly of Conanga 16
 Rito 6EMA of 4L3 Emblazon#
 Entrance of Conanga 206#

Sitz Wisdom 481T#
KG Miss Magic 1443 17127788
 KG Miss Magic 3528

Connealy Onward#
 Sitz Elluna Elite 94P
 KG Traveler 8180 8171
 KG Miss Magic 6560

CED	BW	WW	YW	SC	MILK	DOC	MARB	REA	\$M	\$W	\$F	\$B	\$C
12	-2.0	61	108	1.74	30	22	1.16	.31	93	80	71	140	275

After seeing Justified at stud, we felt he would really enhance our program from a phenotype and consistency standpoint. This is the second year of large sire group of Justified sons, and the extreme consistency is for real. They maintain light birth weight and well above average growth and carcass traits. He is a \$M leader and offers added milk as well. They are a good-footed, do-it-all kind of bulls. We collected a couple sale feature sons last year and used them back in the program. His first daughters in production at Sinclair are brood cows deluxe!



A NO HOLES HERDSIRE BY 9P31!



3 **SINCLAIR JUSTIFIED K013**
REG: 20553732 | DOB: 02/23/22 | TATTOO: K013

Individual Performance					EPD's				
BW	ADJ. WW	WR	ADJ. YW	YR	CED	BW	WW	MILK	YW
ET	661	115	1178	112	8	-1.2	56	32	100

Individual Performance				Mat	\$ Values				
ADG	Act. IMF	REA/100 lbs	SEN	\$M	\$W	\$F	\$G	\$B	
3.63	3.72	.97	-7	75	62	76	54	130	

Dam's Production WR: 11 @ 106 YR: 9 @ 107

Connealy Judgment
KG Justified 3023 17707279#
KG Miss Magic 1443

Sinclair K Bty 9P31 V149 16361083
N Bar Kinochtry Beauty 4317#

Connealy Consensus 7229#
Entrine of Conanga 9876#
Sitz Wisdom 481T#
KG Miss Magic 3528
Gardens Prime Time#
N Bar Miss Emulous A404
Leachman Bold Driver#
N Bar Kinochtry Beauty 2414

K012, K013, K011, and K015 are an exceptional flush of full brothers who offer unequalled cow-making potential right from the heart of the program. Their dam, 9P31, is a herd favorite and

4 **SINCLAIR JUSTIFIED K012**
REG: 20553729 | DOB: 02/23/22 | TATTOO: K012

Individual Performance					EPD's				
BW	ADJ. WW	WR	ADJ. YW	YR	CED	BW	WW	MILK	YW
ET	567	100	1145	100	8	-1.2	48	32	88

Individual Performance				Mat	\$ Values				
ADG	Act. IMF	REA/100 lbs	SEN	\$M	\$W	\$F	\$G	\$B	
4.14	2.98	1.01	1	75	60	72	52	124	

Dam's Production WR: 11 @ 106 YR: 9 @ 107

the last daughter of the famed "V149" cow in the Sinclair herd. She is also the dam of Sinclair Exquisite 9X6, sold in 2020 to Don Abarr, MN, and dam of Sinclair Executive 7U43, a top seller in 2018 to Triangle S Ranch, SD. V149 was an iconic producer and nearly ideal in her type and kind with a perfect udder and was an outstanding producer. From the looks of Justified daughters we are calving, these brothers should be valuable breeding tools for replacement females in any herd or environment if you are serious about raising longevity-oriented, range-adapted females. Sinclair is **retaining one-half interest** in lot 3, (K013) and would like to work with the buyer on getting semen collected prior to delivery.

9P31'S CALVING EASE COWMAKER!





THE SINCLAIR PROGRAM HERDSIRE!



SINCLAIR JUSTIFIED K011
 REG: 20553726 | DOB: 02/22/22 | TATTOO: K011

Individual Performance						EPD's				
BW	ADJ. WW	WR	ADJ. YW	YR	CED	BW	WW	MILK	YW	
ET	640	100	1136	100	8	-1.2	48	32	88	
Individual Performance				Mat	\$ Values					
ADG	Act. IMF	REA/100 lbs	\$EN	\$M	\$W	\$F	\$G	\$B		
3.71	3.27	.96	1	75	60	72	53	125		
Dam's Production WR: 11 @ 106 YR: 9 @ 107										



SINCLAIR JUSTIFIED K005
 REG: 20553722 | DOB: 02/15/22 | TATTOO: K005

Individual Performance						EPD's				
BW	ADJ. WW	WR	ADJ. YW	YR	CED	BW	WW	MILK	YW	
ET	579	101	1032	98	8	-2.1	45	32	81	
Individual Performance				Mat	\$ Values					
ADG	Act. IMF	REA/100 lbs	\$EN	\$M	\$W	\$F	\$G	\$B		
3.07	3.38	1.12	5	77	54	68	54	122		
Dam's Production WR: 11 @ 106 YR: 9 @ 107										



SINCLAIR K BTY 9P31 V149, THE 2ND GENERATION HERDSIRE PRODUCER AND DAM OF LOTS 3-6.



N BAR KINCHTRY BEAUTY 4317, THE LEGENDARY MATERNAL GRANDAM OF LOTS 3-6.



7



SINCLAIR JUSTIFIED K003

REG: 20553704 | DOB: 02/15/22 | TATTOO: K003

Connealy Judgment
KG Justified 3023 17707279#
 KG Miss Magic 1443

Connealy Consensus 7229#
 Entrine of Conanga 9876#
 Sitz Wisdom 481T#
 KG Miss Magic 3528
 Emulation N Bar 5522#
 N Bar Primrose 2424
 N Bar Moderation 9957
 Ideal 4465 of 6807 4286

 N Bar Emulation EXT#
Sinclair Lady 1X63 3M18 16974000
 Sinclair Lady 3M18 4465#

Individual Performance					EPD's				
BW	ADJ. WW	WR	ADJ. YW	YR	CED	BW	WW	MILK	YW
ET	671	100	1266	100	5	.1	62	27	104

Individual Performance				Mat	\$ Values				
ADG	Act. IMF	REA/100 lbs	\$EN	\$M	\$W	\$F	\$G	\$B	
4.10	3.93	1.04	-8	76	67	79	59	138	

Dam's Production WR: 5 @ 107 YR: 4 @ 103

Without question, K003 is the most powerful Justified son in this offering and possibly anywhere with an incredibly gentle disposition. He is at the upper echelon of his contemporaries on all phases of both performance and carcass traits. K003's dam, 1X63, is in the top 5 daughters of N Bar Emulation EXT for WW and YW and is an older full sister to 0X13, the dam of lot 1. 1X63 sold as an elite sale feature in the 2021 Sinclair Online Cow Sale to Brookhill Angus, KY. They are also full sisters to Sinclair Exquisite 0X2, an intriguing EXT son also owned by Brookhill. A unique opportunity to obtain a son of the powerful 1X63 donor. We are very excited about a full sister to K003 in the program. Sinclair Cattle Co is **retaining one-half interest** in K003 and will work with the buyer to have semen collected prior to delivery.

JUSTIFIED'S FINEST!



SINCLAIR LADY 3M18 4465, THE POWERFUL FOUNDATION GRANDAM OF K555.



THE ICONIC IDEAL 4465, THE SINCLAIR FOUNDATION LADY AND THE THIRD DAM OF K555.

JUSTIFIED POWER AND PERFORMANCE!



N BAR PRIMROSE Z1692, A CORNERSTONE FOUNDATION SINCLAIR PRIMROSE DONOR, AND THE GREAT GRANDAM OF LOT 8.



8



SINCLAIR JUSTIFIED K590

REG: 20553678 | DOB: 02/22/22 | TATTOO: K590

Connealy Judgment
KG Justified 3023 17707279#
KG Miss Magic 1443

Sinclair X Changer 0FE35
Sinclair Primrose 8EP21 2P12# 19166644
Sinclair Primrose 2P12 B1#

Connealy Consensus 7229#
Entrine of Conanga 9876#
Sitz Wisdom 481T#
KG Miss Magic 3528
Sinclair Emulation 5522 XP#
Sinclair K Bty 11P3 L234
N Bar Prime Time D806#
N Bar Primrose Z1692

Individual Performance					EPD's				
BW	ADJ. WW	WR	ADJ. YW	YR	CED	BW	WW	MILK	YW
90	668	123	1167	114	4	1.5	59	30	101
Individual Performance				Mat	\$ Values				
ADG	Act. IMF	REA/100 lbs	\$EN	\$M	\$W	\$F	\$G	\$B	
3.66	3.69	1.04	-7	69	57	70	44	113	
Dam's Production WR: 3 @ 113 YR: 2 @ 116									

A big-bodied, heavy-muscled Justified son from the illustrious Primrose cow family. K590 is a top performer and excels in carcass traits as proven by his ratios. His dam, 8EP21, is also at the top of her class with WR 3@113 and YR 2@116, and IMF and REA. Remember, success is bred in through generations of careful selection, not fed in.



SINCLAIR JUSTIFIED K561

REG: 20553486 | DOB: 02/17/22 | TATTOO: K561

Connealy Judgment
KG Justified 3023 17707279#
KG Miss Magic 1443

N Bar Emulation EXT#
Sinclair Miss Wix 0X10 2022 20045444
Miss Wix 2022 HC Mc Cumber#

Connealy Consensus 7229#
Entrine of Conanga 9876#
Sitz Wisdom 481T#
KG Miss Magic 3528
Emulation N Bar 5522#
N Bar Primrose 2424
Leachman Right Time#
Miss Wix 7111 of Mc Cumber

Individual Performance					EPD's				
BW	ADJ. WW	WR	ADJ. YW	YR	CED	BW	WW	MILK	YW
92	622	115	1144	112	3	2.2	60	28	106
Individual Performance				Mat	\$ Values				
ADG	Act. IMF	REA/100 lbs	\$EN	\$M	\$W	\$F	\$G	\$B	
3.81	3.58	1.04	-13	67	53	74	43	117	
Dam's Production WR: 1 @ 115 YR: 1 @ 112									

K561 carries an extremely proven Maternal pedigree that is backed by generations of performance. His young dam, 0X10, is a linebred Emulation daughter that's an exceptional producer weaning K561 with a 115 WR. This bull checks all the boxes!

MATERNAL AND PERFORMANCE BY MISS WIX!



MISS WIX 2022 HC MC CUMBER, THE POWERFUL MATERNAL FOUNDATION GRANDAM OF LOT 9.



9



SINCLAIR JUSTIFIED K330

REG: *20400523 | DOB: 03/07/22 | TATTOO: K330

Connealy Judgment
KG Justified 3023 17707279#
KG Miss Magic 1443

Connealy Consensus 7229#
Entrine of Conanga 9876#
Sitz Wisdom 481T#
KG Miss Magic 3528
R R Rito 707#
Ideal 4465 of 6807 4286
N Bar Double Time D0116
N Bar Enchantress 4908#

Sinclair Rito Legacy 3R9
Sinclair Enchantress 2RL7 17255087
N Bar Enchantress X4129

Individual Performance					EPD's				
BW	ADJ. WW	WR	ADJ. YW	YR	CED	BW	WW	MILK	YW
89	687	114	1116	109	5	.9	55	28	93
Individual Performance				Mat	\$ Values				
ADG	Act. IMF	REA/100 lbs		\$EN	\$M	\$W	\$F	\$G	\$B
2.76	3.82	1.15		-8	68	54	65	43	108

Dam's Production WR: 9 @ 105 YR: 5 @ 103

K330 is a massive Justified son out of 2RL7, an outstanding Rito Legacy daughter whose grandam is also the dam of N Bar Shadow. They've been top ratiing cows for generations. Buy with confidence; this bull will get the job done.



N BAR ENCHANTRESS X4129, THE FOUNDATION GRANDAM OF LOT 10 AND A MATERNAL SISTER TO N BAR SHADOW.

Donation



With utmost gratitude, Sinclair Cattle Company supports our youth in agriculture. We are pleased to donate 100% of the proceeds of this semen offering equally to the Wyoming State 4H Foundation and Wyoming FFA Foundation.



10 STRAWS
Sinclair In Time 6BT39



10 STRAWS
Sinclair Boss



10 STRAWS
N Bar Explosion



5 STRAWS
Emulation N Bar 5522



11



SINCLAIR GARY K293

REG: *20425658 | DOB: 03/04/22 | TATTOO: K293

Connealy Niobrara 5451
Connealy Gary 18869442
 Hertha of Conanga 1639

Connealy Confidence Plus#
 Britha of Conanga 167
 Connealy Consensus#
 Herra of Conanga 4462
 Briar of Wye UMF 9024
 Blackbird of Wye UMF 8623
 N Bar Emulation Ext A1747
 N Bar Lady Ida Z262

Bonheur of Wye UMF 9667
Sinclair Lady Ida 4WYE1 7V63 17831622
 Sinclair Laady Ida 7V63 B5

Individual Performance					EPD's				
BW	ADJ. WW	WR	ADJ. YW	YR	CED	BW	WW	MILK	YW
85	706	117	1212	118	2	1.1	66	23	115
Individual Performance					\$ Values				
ADG	Act. IMF	REA/100 lbs	Mat	SEN	\$M	\$W	\$F	\$G	\$B
3.36	3.64	1.12	-18	48	56	83	40	122	

Dam's Production WR: 6 @ 104 YR: 4 @ 103

K293 is a first-class herdsire prospect with a different pedigree twist of blending performance with maternal. A moderate bw bull that charts outstanding performance and carcass trait ratios backed by a proven producer. If you feed cattle for a living or sell your calves by the pound, these Gary sons fit the bill. Their daughters turn into fancy replacement females as well.

**A CHECKS ALL THE BOXES
 HERDSIRE PROSPECT!**



**REF
 SIRE**

CONNEALY GARY

REG: 18869442 | DOB: 01/21/17 | TATTOO: 7293

Connealy Confidence Plus
Connealy Niobrara 5451 18227124
 Britha of Conanga 167

Connealy Consensus
Hertha of Conanga 1639 17063920
 Herra of Conanga 4462

Connealy Confidence 0100
 Elbanna of Conanga 1209
 Connealy Answer 7304
 Bristy of Conanga 9283
 KMK Alliance 6595 187
 Blinda of Conanga 004
 Connealy Danny 5398
 Harrah of Conanga 578

CED	BW	WW	YW	SC	MILK	DOC	MARB	REA	\$M	\$W	\$F	\$B	SC
5	1.9	84	159	1.24	21	28	.64	.68	63	76	120	169	282

Connealy Gary was selected to enhance performance, muscle, docility, scrotal circumference and ribeye in the Sinclair females. We feel he has complimented the Sinclair gene pool very well. The sons are big, stout, heavy muscled bulls that will make a lot of friends sale day. His daughters are among the top of the replacement pen. Use Gary sons to give your herd a "boost" without sacrificing any given traits.



12



SINCLAIR GARY K007

REG: 20559401 | DOB: 02/17/22 | TATTOO: K007

Connealy Niobrara 5451
Connealy Gary 18869442
 Hertha of Conanga 1639

Connealy Confidence Plus#
 Britha of Conanga 167
 Connealy Consensus#
 Herra of Conanga 4462
 N Bar Emulation EXT#
 N Bar Blackbird 4307#
 N Bar Nighthawk
 N Bar Lady Ida 4360

 N Bar Emulation Ext V722
Sinclair Lady Ida 8XV12 C52# 16026999
 N Bar Lady Ida Z1453

Individual Performance					EPD's				
BW	ADJ. WW	WR	ADJ. YW	YR	CED	BW	WW	MILK	YW
ET	617	100	1265	100	4	.3	60	26	107

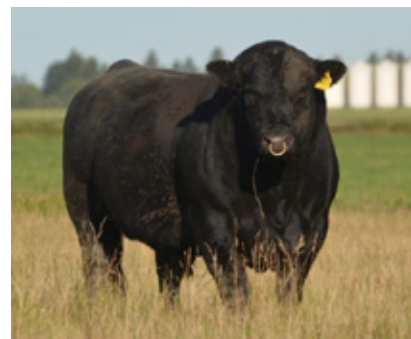
Individual Performance				Mat	\$ Values				
ADG	Act. IMF	REA/100 lbs	SEN	\$M	\$W	\$F	\$G	\$B	
4.41	3.54	1.02	-14	49	60	87	43	130	

Dam's Production WR: 11 @ 109 YR: 10 @ 107

Sinclair is **retaining one-half interest** in lot 12, (K007) and would like to work with the buyer on getting semen collected prior to delivery.

Premier Herdsire Prospect! K Double 07 and his full brother K014 are the product of ET from a most treasured cow in the herd, the great Lady Ida 8XV12 who has earned a most impressive production record the old-fashioned way; out on the range and breeding back in a timely manner every year while raising herdsires. Notable sons of 8XV12 include Sinclair Broker 3RC33, a past high seller to Chapman Cattle Co, Canada and Sinclair Executive 9UF3, the second high seller of the 2020 sale to Don Abarr, MN. She is enrolled in the ET program again this spring to make some very coveted daughters. K007 is a bold-sprung, big-ribbed, high-volumed cowmaker who displays excellent carcass ratios as well as added docility and calving ease. Our first Gary daughters in production have well exceeded our expectations, and with the added maternal influence of EXT V722, this mating should be a home run!

***BIG TIME HERDSIRE
 BY THE LEGENDARY
 8XV12!***





13



SINCLAIR GARY K014
 REG: 20559404 | DOB: 02/25/22 | TATTOO: K014

Connealy Niobrara 5451
Connealy Gary 18869442
 Hertha of Conanga 1639



N Bar Emulation Ext V722
Sinclair Lady Ida 8XV12 C52# 16026999
 N Bar Lady Ida Z1453

Connealy Confidence Plus#
 Britha of Conanga 167
 Connealy Consensus#
 Herra of Conanga 4462
 N Bar Emulation EXT#
 N Bar Blackbird 4307#
 N Bar Nighthawk
 N Bar Lady Ida 4360

Individual Performance					EPD's				
BW	ADJ. WW	WR	ADJ. YW	YR	CED	BW	WW	MILK	YW
ET	674	100	1252	100	4	.3	60	26	107

Individual Performance				Mat	\$ Values				
ADG	Act. IMF	REA/100 lbs	SEN	SM	\$W	\$F	\$G	\$B	
4.35	3.74	1.03	-14	49	60	87	45	132	

Dam's Production WR: 11 @ 109 YR: 10 @ 107

K014 is the total performance herdsire prospect with a rich maternal N Bar heritage. He blew away his contemporaries on gain in the development phase. This is an outstanding individual to make tremendous females that raise heavy calves without sacrificing any maternal or carcass traits. His dam, 8XV12's production record is impeccable. Seize the opportunity to buy from the top of the program! Don't miss this rare chance to own a top-notch direct 8XV12 son!

THE PERFORMANCE KING!



SINCLAIR EXECUTIVE 9UF3, A MATERNAL BROTHER TO LOTS 12 AND 13.





A TRUE MATERNAL BEEF MACHINE!



14 SINCLAIR GARY K592

REG: *20559306 | DOB: 02/22/22 | TATTOO: K592

Connealy Niobrara 5451
Connealy Gary 18869442
 Hertha of Conanga 1639

Sinclair Exactly 4U2
Sinclair Intense 8UR16 Y728 19169666
 Sinclair Entense Y728

Individual Performance					EPD's				
BW	ADJ. WW	WR	ADJ. YW	YR	CED	BW	WW	MILK	YW
90	672	111	1288	125	1	2.6	72	24	136
Individual Performance				Mat	\$ Values				
ADG	Act. IMF	REA/100 lbs	\$EN	\$M	\$W	\$F	\$G	\$B	
3.98	3.04	.93	-32	57	53	94	30	124	
Dam's Production WR: 2 @ 114 YR: 2 @ 115									

A huge-bodied, female-making machine with worlds of performance backed by some of the finest maternal genetics in the business. K592's young dam, 8UR16, is one of our very top production daughters of 4U2, posting WR 2@114 and YR 2@115. He is backed by generations of elite cows including his grandam and great grandam, the immortal Shadybrook Ever Entense 491G, whose progeny are some of the most prized maternal possessions in the breed.



SINCLAIR INTENSE J659, AN OUTSTANDING MATERNAL BROTHER TO LOT 14 FEATURED IN THE 2022 SALE.



SHADY BROOK ENTENSE 491G, THE FORMER \$320,000 WORLD-RECORD SELLING COW AND MATERNAL GRANDAM OF LOT 14.



15 SINCLAIR GARY K342

REG: *20425654 | DOB: 03/10/22 | TATTOO: K342

Connealy Niobrara 5451
Connealy Gary 18869442
 Hertha of Conanga 1639

Sinclair Preview 2TL6
Sinclair Ms Emulous 7TA9 18826212
 Sinclair Ms Emulous 2G18#

Connealy Confidence Plus#
 Britha of Conanga 167
 Connealy Consensus#
 Herra of Conanga 4462
 Sinclair Timeless 8BA4#
 Sinclair K Bty 0A3 7XT55
 Sinclair Grass Master#
 Sinclair Ms Emulous 5PV72

Individual Performance					EPD's				
BW	ADJ. WW	WR	ADJ. YW	YR	CED	BW	WW	MILK	YW
98	744	123	1200	117	-2	3.0	73	23	126
Individual Performance				Mat	\$ Values				
ADG	Act. IMF	REA/100 lbs	\$EN	\$M	\$W	\$F	\$G	\$B	
3.10	2.88	1.07	-18	66	56	86	32	118	
Dam's Production WR: 4 @ 104 YR: 1 @ 117									



16

A MAGNIFICENT BLEND OF RAINMAKER AND EMULATION!



SINCLAIR RAINMAKER K16

REG: *20424349 | DOB: 02/09/22 | TATTOO: K16

Sitz Rainmaker 8075
Sitz Rainmaker 11127 15734469#
 Sitz Emma E 417L

Sitz Rainmaker 6169#
 Sitz Erica Everelda 3172#
 Sitz Traveler 5556#
 Sitz Emma E 1336

Sinclair Emulation XXP#
Sinclair Blkbird 4XX11 0A15 17802210
 Sinclair Blkbird 0A15 8R41

N Bar Emulation EXT#
 N Bar Primrose Y3051#
 Emulation 31#
 Sinclair Blkbird 8R41 5P101

Individual Performance					EPD's				
BW	ADJ. WW	WR	ADJ. YW	YR	CED	BW	WW	MILK	YW
79	646	107	1163	113	5	1.1	57	26	112

Individual Performance				Mat	\$ Values				
ADG	Act. IMF	REA/100 lbs	SEN	SM	\$W	\$F	\$G	\$B	
3.43	3.23	.91	-20	73	48	95	37	132	

Dam's Production WR: 7 @ 102 YR: 6 @ 106

Herd sire prospect. K16 is a calving ease, balanced trait prospect that excels from birth to yearling. He is backed by proven Emulation sires that have stood the test of time. His moderate framed, easy fleshing, beautiful uddered dam's combined birth ratio is 7@95. We've been very pleased in the 11127 progeny thus far and are excited to see his females in production come next spring.



REF SIRE SITZ RAINMAKER 11127#

REG: 15734469 | DOB: 4/10/07 | TATTOO: 11127

Sitz Rainmaker 6169#
Sitz Rainmaker 8075 14949299
 Sitz Erica Everelda 3172

Sitz Rainmaker 8987
 Sitz Barbaramere Jet 3007
 Sitz Focus 121K
 Sitz Erica Everelda 2039

Sitz Traveler 5556
Sitz Emma E 417L 13945988
 Sitz Emma E 1336

Traveler 124 G D A R
 Sitz Everelda Entense 1137
 Leachman Right Time
 Sitz Emma E 611

CED	BW	WW	YW	SC	MILK	DOC	MARB	REA	\$M	\$W	\$F	\$B	\$C
1	3.4	67	130	1.85	32	42	63	.51	78	65	106	156	280

11127 is a highly proven performance sire that adds a stacked maternal pedigree, docility, fertility, and carcass traits. The results on crossing 11127 on the Sinclair herd have proven very successful thus far. The Emulation x Rainmaker Cross is extremely intriguing.

SINCLAIR EMULATION XXP, THE INFLUENTIAL SINCLAIR PATHFINDER SIRE AND MATERNAL GRANDSIRE OF LOT 16



**MUSCLE AND
MATERNAL
BY 11127!**



SINCLAIR RAINMAKER K144

REG: *20424364 | DOB: 03/04/22 | TATTOO: K144

Sitz Rainmaker 8075
Sitz Rainmaker 11127 15734469#
Sitz Emma E 417L

Sitz Rainmaker 6169#
Sitz Erica Everelda 3172#
Sitz Traveler 5556#
Sitz Emma E 1336

Dunlouse Jipsey Earl E161#
Sinclair Blacky OXT41 8SV32 16660448
Sinclair Blacky 8SV32 6P18

Betro of Classlochie
Dunlouse Jipsey Clova C095
Sinclair Telecast 0153
Sinclair Blacky 6P18 J126

Individual Performance					EPD's				
BW	ADJ. WW	WR	ADJ. YW	YR	CED	BW	WW	MILK	YW
89	632	105	1136	111	4	1.9	48	31	89
Individual Performance				Mat	\$ Values				
ADG	Act. IMF	REA/100 lbs	SEN	\$M	\$W	\$F	\$G	\$B	
3.21	2.76	1.02	-8	82	46	81	28	108	

Dam's Production WR: 11 @ 103 YR: 8 @ 100

K144 is a really thick, big-hipped, high-volume kind of bull that is good footed and will last a long time. His dam is a problem-free longevity-oriented cow that has proven herself to have 11 calves ratio 103 at weaning. Really solid genetics here.



SINCLAIR RAINMAKER K274

REG: *20424350 | DOB: 03/02/22 | TATTOO: K274

Sitz Rainmaker 8075
Sitz Rainmaker 11127 15734469#
Sitz Emma E 417L

Sitz Rainmaker 6169#
Sitz Erica Everelda 3172#
Sitz Traveler 5556#
Sitz Emma E 1336

Sinclair Pioneer 1RF1
Sinclair Lady Ida 3RM38 17748709
Sinclair Lady Ida 1JP16 9RD2#

PBC 707 1M F0203#
N Bar Miss Emulous A404
Dunlouse Jipsey Earl E161#
Sinclair Lady Ida 9RD2 7RL2#

Individual Performance					EPD's				
BW	ADJ. WW	WR	ADJ. YW	YR	CED	BW	WW	MILK	YW
89	632	105	1093	107	5	1.6	47	31	84
Individual Performance				Mat	\$ Values				
ADG	Act. IMF	REA/100 lbs	SEN	\$M	\$W	\$F	\$G	\$B	
3.06	3.19	.94	-3	83	47	70	29	98	

Dam's Production WR: 8 @ 102 YR: 7 @ 100

This ruggedly designed, sound structured prospect checks the boxes for added docility, milking ability, fertility, and performance. His Lady Ida dam is a maternal specialist and a solid producer every year.

**THICKNESS
AND FLESHING
ABILITY
RAINMAKER
STYLE!**





**TIMELESS
PERFORMANCE
11127
GENETICS!**

19

19 SINCLAIR RAINMAKER K50
REG: *20424346 | DOB: 02/14/22 | TATTOO: K50

Sitz Rainmaker 8075
Sitz Rainmaker 11127 15734469#
Sitz Emma E 417L

Sinclair Timeless 8BA4#
Sinclair Primrose 5TL32 3RC1# 18154081
Sinclair Primrose 3RC1 7FF4

Sitz Rainmaker 6169#
Sitz Erica Everelda 3172#
Sitz Traveler 5556#
Sitz Emma E 1336
Sinclair IN Time 6BT39
Sinclair Blackbird 2P8 7079#
Sinclair Entrepreneur 8R101
Sinclair Primrose 7FF4 A14

Individual Performance					EPD's				
BW	ADJ. WW	WR	ADJ. YW	YR	CED	BW	WW	MILK	YW
86	650	108	1253	122	5	1.5	58	31	119
Individual Performance				Mat	\$ Values				
ADG	Act. IMF	REA/100 lbs	SEN	\$M	\$W	\$F	\$G	\$B	
3.83	3.59	.91	-28	51	52	98	40	138	

Dam's Production WR: 5 @ 107 YR: 2 @ 117

This performance powerhouse ratioed 122 for YW out of an extremely stout and productive Timeless daughter and still has a very balanced EPD profile. The Primrose cows always get the job done. Serious performance breeders take notice.

20 SINCLAIR RAINMAKER K263
REG: *20424359 | DOB: 03/01/22 | TATTOO: K263

Sitz Rainmaker 8075
Sitz Rainmaker 11127 15734469#
Sitz Emma E 417L

N Bar Prime Time D806#
Sinclair Ms Emulous 2P6 D47 17218793
N Bar Miss Emulous B514

Sitz Rainmaker 6169#
Sitz Erica Everelda 3172#
Sitz Traveler 5556#
Sitz Emma E 1336
Gardens Prime Time#
N Bar Miss Emulous A404
N Bar Emulation Extra V129
N Bar Miss Emulous Y3502A

Individual Performance					EPD's				
BW	ADJ. WW	WR	ADJ. YW	YR	CED	BW	WW	MILK	YW
88	689	114	1183	115	3	1.8	57	30	112
Individual Performance				Mat	\$ Values				
ADG	Act. IMF	REA/100 lbs	SEN	\$M	\$W	\$F	\$G	\$B	
3.33	3.07	.91	-16	62	50	94	41	135	

Dam's Production WR: 9 @ 102 YR: 7 @ 108

A high octane 11127 son out of a proven N Bar bred cow that never misses.



SINCLAIR TIMELESS 8BA4, THE PATHFINDER MATERNAL GRANDSIRE OF LOT 19.



SINCLAIR EMULATION J87, A FEATURED SON OF SINCLAIR X-PLUS 8XX3 AND MATERNAL BROTHER TO LOT 19 FROM THE 2022 SALE TO MA AND PA ANGUS, SD.



SINCLAIR GARY J362, A PERFORMANCE POWERHOUSE AND A MATERNAL BROTHER TO LOT 20.



21



SINCLAIR NIGHTHAWK K251

REG: *20400529 | DOB: 02/26/22 | TATTOO: K251

Ankonian Cornhusker#
N Bar Nighthawk 11403481
 N Bar Enchantress 4908#

Ankonian Cornerstone
 Ankony 8F78 Erica 341B6
 Basin Emulation 5953
 Coffey Enchantress 424
 PBC 707 1M F0203#
 N Bar Miss Emulous A404
 N Bar Emulation EXT#
 Sinclair Lady 0653 4465

Sinclair Pioneer 1RF1
Sinclair Lady 3RM40 1X53 17749572
 Sinclair Lady 1X53 0653

Individual Performance					EPD's				
BW	ADJ. WW	WR	ADJ. YW	YR	CED	BW	WW	MILK	YW
79	660	109	1202	117	6	-.7	41	26	77

Individual Performance				Mat	\$ Values				
ADG	Act. IMF	REA/100 lbs	\$EN	\$M	\$W	\$F	\$G	\$B	
3.01	3.70	1.00	-7	53	40	69	29	98	

Dam's Production **WR:** 8 @ 100 **YR:** 5 @ 95

Top Herdsire Prospect! K251 blends some of the finest maternal genetics in the breed into one intriguing package. He's a calving ease bull who is at the top of the pack for performance, and is a thick, stylish bull that really demands your attention in the sale pen. The dam, 3RM40, is a moderate framed, high volumed cow that is easy fleshing and has excellent mothering instincts. His sire, Nighthawk, a maternal brother to N Bar Shadow, made beautiful females that held up well for many years. Tom Elliott once described Nighthawk as "Walking Romance". K251 is a true multi-trait improver!

**OLD SCHOOL MATERNAL,
 MODERN DAY PERFORMANCE!**



SINCLAIR LADY 0653 4465, THE POWERFUL GREAT GRANDAM OF K251



THE LEGENDARY IDEAL 4465, THE SINCLAIR FOUNDATION LADY AND THE THIRD DAM OF LOT 21.



REF SIRE N BAR NIGHTHAWK
 REG: **11403481** | DOB: **03/02/90** | TATTOO: **Z276**
 Ankonian Cornerstone
Ankonian Cornhusker 9785532#
 Ankony 8F78 Erica 341B6
 Basin Emulation 5953
N Bar Enchantress 4908# 11074978
 Coffey Enchantress 424
 Schearbrook Conductor N137
 Ankony B999 Lass 160B4
 Ankonian Dynamo 27542
 Ankony B999 Lass 58352
 N Bar Emulation 8520
 Basin Pamela 2161
 Jetliner 707 of Conanga#
 Coffey Enchantress 1032

CED	BW	WW	YW	SC	MILK	DOC	MARB	REA	SM	SW	\$F	\$B	\$C
-4	1.7	30	64	1.16	34	-7	.23	-.23	22	32	70	91	140

Nighthawk is a time-tested maternal and performance sire of phenomenal females that are hard to fault. His sons should sire productive females that last in the herd. Nighthawk's avg progeny ratios are: CE 1.2 BW 101 WW 99 YW 101 IMF 106, and has 103 daughters with a whopping combined nursing ratio of 103.

22 SINCLAIR NIGHTHAWK K331
 REG: *20400543 | DOB: 03/08/22 | TATTOO: K331

Ankonian Cornhusker#
N Bar Nighthawk 11403481
 N Bar Enchantress 4908#
 Sinclair Emulation 5522 XP#
Sinclair Lady Ida SFE16 18152701
 Sinclair Lady Ida OJP29 855
 Ankonian Cornerstone
 Ankony 8F78 Erica 341B6
 Basin Emulation 5953
 Coffey Enchantress 424
 Emulation N Bar 5522#
 N Bar Primrose Y3051#
 Dunlouse Jipsey Earl E161#
 Sinclair Lady Ida 855 6PV1

Individual Performance					EPD's					
BW	ADJ. WW	WR	ADJ. YW	YR	CED	BW	WW	MILK	YW	
93	678	112	1120	109	-2	2.0	43	29	74	
Individual Performance				Mat	\$ Values					
ADG	Act. IMF	REA/100 lbs	SEN	SM	SW	\$F	\$G	\$B		
3.09	2.39	.94	-6	42	42	57	19	76		
Dam's Production					WR: 4 @ 103	YR: 2 @ 103				

23 SINCLAIR NIGHTHAWK K273
 REG: *20400538 | DOB: 03/02/22 | TATTOO: K273

Ankonian Cornhusker#
N Bar Nighthawk 11403481
 N Bar Enchantress 4908#
 Sinclair Executive 9XV2
Sinclair Blkcap 4U5 602 17830666
 Sinclair Blkcap 602 A26
 Ankonian Cornerstone
 Ankony 8F78 Erica 341B6
 Basin Emulation 5953
 Coffey Enchantress 424
 N Bar Emulation Ext V722
 N Bar Primrose Y3051#
 Sinclair Pioneer 1F3
 Rito Majesty 4A26 of F0203

Individual Performance					EPD's					
BW	ADJ. WW	WR	ADJ. YW	YR	CED	BW	WW	MILK	YW	
83	680	113	1107	108	5	-.1	38	28	71	
Individual Performance				Mat	\$ Values					
ADG	Act. IMF	REA/100 lbs	SEN	SM	SW	\$F	\$G	\$B		
2.79	2.78	.90	-5	51	39	60	23	83		
Dam's Production					WR: 7 @ 98	YR: 6 @ 102				



SINCLAIR EMULATION 5522 XP, THE HIGHLY MATERNAL GRANDSIRE OF LOT 22.




CONVENIENCE BUYING
Online Bids
 DV Auction & Cattle USA
 See inside back cover for details

Broadcasting Real-Time Auctions



REF SIRE REISIG LONGMIRE 8326
 REG: 19448009 | DOB: 08/30/18 | TATTOO: 8326

Rito 707 of Ideal 3407 7075
S AV Renown 3439 17633839#
 S AV Blackcap May 4136

R R Rito 707#
 Ideal 3407 of 1418 076
 S AV 8180 Traveler 004#
 S AV May 2397#

N Bar Emulation EXT#
BUF Eriskay 7417 16118882
 J Bar 7 Eriskay Q13-71K1#

Emulation N Bar 5522#
 N Bar Primrose 2424
 Sitz Traveler 8180#
 E F Eriskay Q13 7107

CED	BW	WW	YW	SC	MILK	DOC	MARB	REA	SM	SW	SF	SB	SC
8	-1.1	36	72	.72	22	18	-.06	.58	54	32	51	70	145

Longmire was purchased from Reisig Cattle to add the Rito influence while still enhancing EXT to another generation. His proven dam carried a stacked pedigree of proven maternal and performance giants for many generations. His first daughters are now in production and are the favorite sire group of 2 yr olds. Don't overlook the Longmire sons!

**PREEMINENT ERISKAY
 HERDSIRE PROSPECT!**

24 SINCLAIR LONGMIRE K504
 REG: 20546270 | DOB: 02/07/22 | TATTOO: K504

S AV Renown 3439#
Reisig Longmire 8326 19448009
 BUF Eriskay 7417

Rito 707 of Ideal 3407 7075
 S AV Blackcap May 4136
 N Bar Emulation EXT#
 J Bar 7 Eriskay Q13-71K1#
 Basin Rainmaker D S 380U#
 Basin Bardolene 423U
 D H D Traveler 6807#
 Papa Eriskay 7883

Basin Rainmaker 654X#
Sinclair Eriskay 502 2N1# 18313177
 Sinclair Eriskay 2N1 7883#

Individual Performance					EPD's				
BW	ADJ. WW	WR	ADJ. YW	YR	CED	BW	WW	MILK	YW
90	609	113	1121	110	6	.4	42	29	83
Individual Performance				Mat	\$ Values				
ADG	Act. IMF	REA/100 lbs	SEN	\$M	\$W	\$F	\$G	\$B	
3.64	2.51	1.11	-11	51	41	63	22	85	

Dam's Production WR: 6 @ 111 YR: 6 @ 110

An intriguing herdsire prospect with a unique double-bred Eriskay pedigree. An own son of the herdsire producer, Eriskay 502, which is an exceptional daughter of the rare and valuable Basin Rainmaker 654X out of the performance queen, Eriskay 2N1. Sinclair Black Iron 9UR5, a 5O2 son, sold as a sale feature to Leadore Angus, ID in 2020. K504 is loaded with muscle mass and performance and is the most powerful Longmire son to date! Sinclair is **retaining one-half interest** in lot 24, (K504) and would like to work with the buyer on getting semen collected prior to delivery.



SINCLAIR ERISKAY 2N1, THE LEGENDARY PERFORMANCE QUEEN AND GRANDAM OF LOT 24.



MATERNAL BROTHER OF LOT 24, SINCLAIR BLACK IRON 9UR5, A TOP SELLER IN 2020 TO LEADORE ANGUS, ID.



Original N-Bar Genetics Working For You

Staying true to the Legacy

THE TOTAL PACKAGE BY LONGMIRE!



SINCLAIR LONGMIRE K295

REG: *20400566 | DOB: 03/04/22 | TATTOO: K295

S A V Renown 3439#
Reisig Longmire 8326 19448009
BUF Eriskay 7417

Rito 707 of Ideal 3407 7075
S A V Blackcap May 4136
N Bar Emulation EXT#
J Bar 7 Eriskay Q13-71K1#

Sinclair Promise 4RP15
Sinclair Blkbird 6RE29 OXM1# 18506492
Sinclair Blkbird OXM1 8XV8

Sinclair Rito Promise OR12
Sinclair Eriskay 5E3 2N11#
N Bar Prime Time D806#
Sinclair Blkbird 8XV8 5P21

Individual Performance					EPD's				
BW	ADJ. WW	WR	ADJ. YW	YR	CED	BW	WW	MILK	YW
89	658	109	1106	108	4	.4	46	24	85

Individual Performance				Mat	\$ Values				
ADG	Act. IMF	REA/100 lbs	\$EN	\$M	\$W	\$F	\$G	\$B	
2.91	2.79	1.13	1	62	41	63	25	88	

Dam's Production WR: 5 @ 105 YR: 4 @ 107

A really balanced, complete herdsire prospect, by a dam that knows how to raise the good ones every year. This is a thick-ended, deep-bodied bull that will be a cowman's dream. His dam, 6RE29, is a problem-free, consistently good producer each year. The first Longmire daughters in production are some of the very favorites of their calf crop.



SINCLAIR GARY J359, A MATERNAL BROTHER TO K295, AND WAS A FEATURED LOT IN THE 2022 SALE TO BROKEN B FARMS, MO.



SINCLAIR LONGMIRE K580

REG: *20549827 | DOB: 02/20/22 | TATTOO: K580

S A V Renown 3439#
Reisig Longmire 8326 19448009
BUF Eriskay 7417

Rito 707 of Ideal 3407 7075
S A V Blackcap May 4136
N Bar Emulation EXT#
J Bar 7 Eriskay Q13-71K1#

N Bar Emulation Ext A1747
Sinclair Lady Ida 9V10 3TL12 19602918
Sinclair Lady Ida 3TL12 1XX9

N Bar Emulation EXT#
N Bar Clova Pride U3031
Sinclair Timeless 8BA4#
Sinclair Lady Ida 1XX9 3S41

Individual Performance					EPD's				
BW	ADJ. WW	WR	ADJ. YW	YR	CED	BW	WW	MILK	YW
90	638	106	1142	111	2	1.4	46	23	90

Individual Performance				Mat	\$ Values				
ADG	Act. IMF	REA/100 lbs	\$EN	\$M	\$W	\$F	\$G	\$B	
3.10	3.38	1.07	-12	60	37	73	19	92	

Dam's Production WR: 2 @ 101 YR: 1 @ 111

A top performer with outstanding ratios backed by EXT A1747 and the Lady Ida cow family for countless generations. A bull that enhances all traits in the right direction.



N BAR EMULATION EXT A1747, THE HIGH PERFORMANCE EXT SON AND MATERNAL GRANDSIRE OF LOT 26.

27 SINCLAIR LONGMIRE K604
 REG: *20548781 | DOB: 02/24/22 | TATTOO: K604

S A V Renown 3439#
Reisig Longmire 8326 19448009
 BUF Eriskay 7417

Rito 707 of Ideal 3407 7075
 S A V Blackcap May 4136
 N Bar Emulation EXT#
 J Bar 7 Eriskay Q13-71K1#
 Sinclair Deliverance 5U38
 Sinclair Delia 1FE18 404
 Sinclair Net Present Value#
 Sinclair K Bty 6FA5 J495

Sinclair Delivery 7UD6
Sinclair K Bty 9UE4 8PV43 19475364
 Sinclair K Bty 8PV43 6FA5#

Individual Performance					EPD's				
BW	ADJ. WW	WR	ADJ. YW	YR	CED	BW	WW	MILK	YW
88	620	103	1132	110	4	1.3	48	21	88
Individual Performance				Mat	\$ Values				
ADG	Act. IMF	REA/100 lbs	SEN	\$M	\$W	\$F	\$G	\$B	
3.14	2.48	1.17	-7	65	39	68	16	84	

Dam's Production WR: 2 @ 119 YR: 2 @ 111

K604 is at the top of the Longmire pack. His dam is a stellar young cow with 2 WR @119. This is the kind of bull for producers who sell their calves at weaning and keep the finest replacements.



SINCLAIR CATTLE COMPANY, INC.



29 SINCLAIR LONGMIRE K60
 REG: *20419886 | DOB: 02/16/22 | TATTOO: K60

S A V Renown 3439#
Reisig Longmire 8326 19448009
 BUF Eriskay 7417

Rito 707 of Ideal 3407 7075
 S A V Blackcap May 4136
 N Bar Emulation EXT#
 J Bar 7 Eriskay Q13-71K1#
 Sinclair Emulation XXP#
Sinclair K Bty 4XX33 7BT20 17821754
 Sinclair K BTY 7BT20 11P3#

Individual Performance					EPD's				
BW	ADJ. WW	WR	ADJ. YW	YR	CED	BW	WW	MILK	YW
78	579	96	1065	104	7	-.7	44	21	87
Individual Performance				Mat	\$ Values				
ADG	Act. IMF	REA/100 lbs	SEN	\$M	\$W	\$F	\$G	\$B	
3.39	3.70	.99	-7	64	36	72	27	99	

Dam's Production WR: 7 @ 98 YR: 4 @ 104

A big, high-performance bull that will produce an outstanding set of sons at weaning and beautiful replacement females.



SINCLAIR
 BLACKBIRD 5E2
 2C9, DAM OF
 LOT 28

28 SINCLAIR LONGMIRE K010
 REG: 20551861 | DOB: 02/21/22 | TATTOO: K010

S A V Renown 3439#
Reisig Longmire 8326 19448009
 BUF Eriskay 7417

Rito 707 of Ideal 3407 7075
 S A V Blackcap May 4136
 N Bar Emulation EXT#
 J Bar 7 Eriskay Q13-71K1#
 N Bar Emulation EXT#
 N Bar Kinochtry Beauty 4288
 D H D Traveler 6807#
 Papa Blackbird 9864#

N Bar Explosion#
Sinclair Blackbird 5E2 2C9# 14969676
 Sinclair Blackbird 2C9 9864

Individual Performance					EPD's				
BW	ADJ. WW	WR	ADJ. YW	YR	CED	BW	WW	MILK	YW
ET	613	106	1063	101	3	-.4	38	24	67
Individual Performance				Mat	\$ Values				
ADG	Act. IMF	REA/100 lbs	SEN	\$M	\$W	\$F	\$G	\$B	
3.24	2.99	1.22	-3	50	37	62	27	88	

Dam's Production WR: 14 @ 110 YR: 13 @ 109

If you want range cows that will live forever, this is the bull for you. The donor dam, 5E2, was one of the most proven cows at Sinclair with 14 natural calves and still having a 110 WR and a 109 YR. These genetics are bred to survive and thrive in any environment. A full brother sells as Lot 77.





REF SIRE **SINCLAIR EXQUISITE 0X3**
 REG: 19941920 | DOB: 02/02/20 | TATTOO: 0X3

Emulation N Bar 5522#
N Bar Emulation EXT 10776479#
 N Bar Primrose 2424

Basin Rainmaker 654X#
Basin Pamella F271 12932233
 Basin Pamella 676X#

Emulation 31#
 Ankony 8F78 Lass 8F275
 Emulation 31#
 Primrose N Bar 9962
 Basin Rainmaker D S 380U#
 Basin Bardolene 423U
 Basin Rainmaker D S 450U
 Basin Pamella 6806

CED	BW	WW	YW	SC	MILK	DOC	MARB	REA	\$M	\$W	\$F	\$B	\$C
-4	3.4	46	86	-.18	30	-3	.21	.21	47	40	78	103	181

0X3 was retained by Sinclair as a featured herdsire that adds tremendous length and performance and some extra size for those selling calves by the pound. His impeccable maternal pedigree is rock solid. His first progeny record ratios at CE 1.0 BW 105 WW 102 YW 105. His first calf crop have exceeded our expectations.



30 **SINCLAIR EXQUISITE K505**
 REG: 20546271 | DOB: 02/07/22 | TATTOO: K505

N Bar Emulation EXT#
Sinclair Exquisite 0X3 19941920
 Basin Pamella F271

Sinclair Elation 6SX1
Sinclair Enchantress 9SG13 19475320
 Sinclair Enchantress 6HX26

Emulation N Bar 5522#
 N Bar Primrose 2424
 Basin Rainmaker 654X#
 Basin Pamella 676X#
 Sinclair Vision 3SX12
 Sinclair C Pride 2G72 7X34
 Sinclair Line-XX 2H1
 Sinclair Enchantress WP 40E3

Individual Performance					EPD's				
BW	ADJ. WW	WR	ADJ. YW	YR	CED	BW	WW	MILK	YW
82	642	119	1152	113	4	.9	51	32	90

Individual Performance				Mat	\$ Values			
ADG	Act. IMF	REA/100 lbs	\$EN	\$M	\$W	\$F	\$G	\$B
3.49	3.69	.94	-.16	60	53	65	30	94

Dam's Production WR: 2 @ 115 YR: 2 @ 113

A calving ease, high-performance 0X3 son, whose grandam is also the dam of the Sinclair herdsire, 8FT8, whose sons sell in this offering. His maternal brother, Sinclair Justified J575, sold as a calving ease sale feature in 2022.



scan this code
 This is where you
 will be able to view
 videos when they
 are ready.



EXQUISITE MATERNAL HERDSIRE PROSPECT!

31 SINCLAIR EXQUISITE K616

REG: *20548786 | DOB: 02/27/22 | TATTOO: K616

N Bar Emulation EXT#
Sinclair Exquisite OX3 19941920
 Basin Pamella F271

Emulation N Bar 5522#
 N Bar Primrose 2424
 Basin Rainmaker 654X#
 Basin Pamella 676X#

Sinclair Delivery 7UD6
Sinclair Ms Emulous 9UE9 19475360
 Sinclair Ms Emulous 2RL5 D80

Sinclair Deliverance 5U38
 Sinclair Delia 1FE18 404
 Sinclair Rito Legacy 3R9
 N Bar Miss Emulous A404

Individual Performance					EPD's				
BW	ADJ. WW	WR	ADJ. YW	YR	CED	BW	WW	MILK	YW
88	658	109	1173	114	-2	3.6	50	26	89
Individual Performance				Mat	\$ Values				
ADG	Act. IMF	REA/100 lbs	\$EN	\$M	\$W	\$F	\$G	\$B	
3.31	3.12	1.02	-6	62	39	64	24	87	

Dam's Production WR: 2 @ 102 YR: 2 @ 102

A maternal dream, K616, is a long-bodied, larger-framed bull that is smooth-shouldered and long-fronted and will make really feminine cows. He is out of the famous Ms Emulous "D80" cow family, the dam of the calving ease, maternal and carcass sire, N Bar Prime Time D806.



N BAR MISS EMULOUS A404, "D80", THE FOUNDATION SINCLAIR MISS EMULOUS DONOR AND THE GREAT GRANDAM OF LOT 31.

32 SINCLAIR EXQUISITE K613

REG: *20548785 | DOB: 02/26/22 | TATTOO: K613

N Bar Emulation EXT#
Sinclair Exquisite OX3 19941920
 Basin Pamella F271

Emulation N Bar 5522#
 N Bar Primrose 2424
 Basin Rainmaker 654X#
 Basin Pamella 676X#

N Bar Explosion#
Sinclair K Bty 9E2 1P16 19602897
 Sinclair K Bty 1P16 E118

N Bar Emulation EXT#
 N Bar Kinochtry Beauty 4288
 N Bar Prime Time D806#
 N Bar Kinochtry Beauty Z1925

Individual Performance					EPD's				
BW	ADJ. WW	WR	ADJ. YW	YR	CED	BW	WW	MILK	YW
90	682	113	1189	116	-3	2.8	50	30	93
Individual Performance				Mat	\$ Values				
ADG	Act. IMF	REA/100 lbs	\$EN	\$M	\$W	\$F	\$G	\$B	
3.23	4.47	1.02	-12	57	44	74	27	102	

Dam's Production WR: 1 @ 113 YR: 2 @ 108

K613 is the product of many generations of linebreeding the very best Emulation genetics to excel in range environments. He charted a 113 WR and 116 YR. A really powerful, long-bodied bull that will add performance and enhance maternal and longevity traits.



N BAR EXPLOSION, THE MATERNAL GRANDSIRE OF LOT 32.



CURVE BENDER MATERNAL AND CARCASS GENETICS!



SINCLAIR EXQUISITE K501

REG: **20559908** | DOB: **02/06/22** | TATTOO: **K501**

N Bar Emulation EXT#
Sinclair Exquisite OX3 19941920
 Basin Pamella F271

Sinclair Preview 2TL6
Sinclair Ms Emulous 7TA28 18826193
 Sinclair Ms Emulous 2P7 D47

Emulation N Bar 5522#
 N Bar Primrose 2424
 Basin Rainmaker 654X#
 Basin Pamella 676X#
 Sinclair Timeless 8BA4#
 Sinclair K Bty OA3 7XT55
 N Bar Prime Time D806#
 N Bar Miss Emulous B514

Individual Performance					EPD's				
BW	ADJ. WW	WR	ADJ. YW	YR	CED	BW	WW	MILK	YW
74	568	105	1035	101	6	-8	42	27	76

Individual Performance				Mat				\$ Values			
ADG	Act. IMF	REA/100 lbs	SEN	\$M	\$W	\$F	\$G	\$B			
3.46	3.71	1.20	3	69	43	64	24	88			

Dam's Production WR: 3 @ 99 YR: 3 @ 109

A low-birth, high-growth kind of bull who will catch your eye on sale day. A standout kind of bull that will produce some of the finest females available in the land!



N BAR MISS EMULOUS B514, THE SINCLAIR FOUNDATION MISS EMULOUS DONOR AND THE GRANDAM OF LOT 33.



SINCLAIR EXQUISITE K568

REG: ***20548773** | DOB: **02/18/22** | TATTOO: **K568**

N Bar Emulation EXT#
Sinclair Exquisite OX3 19941920
 Basin Pamella F271

Sinclair Sun Dial 5TL43
Sinclair K Bty 9TG22 2G74 19477811
 Sinclair K Bty 2G74 7FE4

Emulation N Bar 5522#
 N Bar Primrose 2424
 Basin Rainmaker 654X#
 Basin Pamella 676X#
 Sinclair Timeless 8BA4#
 Sinclair Primrose 1G13 6E11#
 Sinclair Grass Master#
 Sinclair K Bty 7FE4 E010#

Individual Performance					EPD's				
BW	ADJ. WW	WR	ADJ. YW	YR	CED	BW	WW	MILK	YW
82	619	103	1153	112	2	1.2	44	29	87

Individual Performance				Mat				\$ Values			
ADG	Act. IMF	REA/100 lbs	SEN	\$M	\$W	\$F	\$G	\$B			
3.35	2.95	1.07	-10	57	41	73	21	94			

Dam's Production WR: 1 @ 103 YR: 1 @ 112

Don't overlook this moderate birth, high-growth bull whose great grandam, 7FE4, is one of our most treasured aged donors.



SINCLAIR K BTY 7FE4 E010, THE FOUNDATION GREAT GRANDAM OF LOT 34.



LEGENDARY PEDIGREE AND PERFORMANCE!



SINCLAIR EXQUISITE K582

REG: *20548774 | DOB: 02/20/22 | TATTOO: K582

N Bar Emulation EXT#
Sinclair Exquisite 0X3 19941920
 Basin Pamella F271

Q A S Traveler 23-4#
Sinclair lady 9Q1 0C4 19607781
 Sinclair Lady 0C4 4465

Emulation N Bar 5522#
 N Bar Primrose 2424
 Basin Rainmaker 654X#
 Basin Pamella 676X#
 Band 234 of Ideal 3163#
 Q A S Blackbird Eve 601 1
 Papa Rito T Intense DHD 6844#
 Ideal 4465 of 6807 4286

Individual Performance					EPD's				
BW	ADJ. WW	WR	ADJ. YW	YR	CED	BW	WW	MILK	YW
92	623	103	1140	111	-1	2.6	40	30	80

Individual Performance				Mat	\$ Values				
ADG	Act. IMF	REA/100 lbs	\$EN	\$M	\$W	\$F	\$G	\$B	\$C
3.53	3.11	.94	-7	38	35	75	28	103	

Dam's Production WR: 2 @ 103 YR: 2 @ 108

A really eye-catching herdsire prospect with a rich maternal heritage with EXT, Rainmaker, Traveler and Ideal 4465 all in one outstanding quality package. He's a big, powerful bull that will catch the attention of the most discriminating breeder.



SINCLAIR LADY 0C4 4465, THE FAMOUS GRANDAM OF LOT 35.

REF SIRE

SINCLAIR EXACTLY 4U2

REG: 17798945 | DOB: 02/11/14 | TATTOO: 4U2

N Bar Emulation Ext V722
Sinclair Executive 9XV2 16365949
 N Bar Primrose Y3051#

R R Rito 707#
Sinclair Lady 0R109 03S3 16715219
 Sinclair Lady 03S3 4465

N Bar Emulation EXT#
 N Bar Blackbird 4307#
 N Bar Emulation EXT#
 N Bar Primrose 2429#
 Rito N Bar
 Eriskay of Rollin Rock 3
 N Bar Shadow X4124
 Ideal 4465 of 6807 4286

CED	BW	WW	YW	SC	MILK	DOC	MARB	REA	\$M	\$W	\$F	\$B	\$C
1	1.1	47	72	.03	14	12	-.15	.34	56	40	51	62	136

4U2 is a unique sire that keeps cow size in check and adding muscle and thickness with added fleshing ability. His dam, 0R109, at age 13, is a donor at Sinclair.

Owned with Wade Risse, SD





SINCLAIR C PRIDE 1RL12 J204, THE POWERFUL DAM OF LOTS 36 AND 37.

ROCK-SOLID COWMAKER FULL BROTHERS!



SINCLAIR BLACK IRON K006
REG: 20551817 | DOB: 02/16/22 | TATTOO: K006

Individual Performance					EPD's				
BW	ADJ. WW	WR	ADJ. YW	YR	CED	BW	WW	MILK	YW
96	542	100	1115	100	4	.2	40	21	64
Individual Performance				Mat	\$ Values				
ADG	Act. IMF	REA/100 lbs	SEN	\$M	\$W	\$F	\$G	\$B	
3.99	2.75	1.10	10	57	41	49	16	65	
Dam's Production WR: 7 @ 105 YR: 5 @ 104									

Sinclair Executive 9XV2
Sinclair Exactly 4U2 17798945
Sinclair Lady 0R109 03S3



Sinclair Rito Legacy 3R9
Sinclair C Pride 1RL12 J204 16934634
N Bar Clova Pride WP C2009

N Bar Emulation Ext V722
N Bar Primrose Y3051#
R R Rito 707#
Sinclair Lady 03S3 4465
R R Rito 707#
Ideal 4465 of 6807 4286
N Bar Shadow X4124
N Bar Clova Pride Z1553



SINCLAIR BLACK IRON K004
REG: 20551802 | DOB: 02/15/22 | TATTOO: K004

Individual Performance					EPD's				
BW	ADJ. WW	WR	ADJ. YW	YR	CED	BW	WW	MILK	YW
80	605	105	1079	103	4	.1	43	20	69
Individual Performance				Mat	\$ Values				
ADG	Act. IMF	REA/100 lbs	SEN	\$M	\$W	\$F	\$G	\$B	
3.46	2.54	1.08	6	55	41	51	15	67	
Dam's Production WR: 7 @ 105 YR: 5 @ 104									

A pair of ET flush brothers from one of the thickest donor cows you can find. They are thick topped and ended and clean-fronted. They are the type that makes really functional cows in tough country. The Clova Pride cows were at the N Bar ranch since the beginning and are still thriving.



N BAR CLOVA PRIDE WP C2009, A FOUNDATION SINCLAIR DONOR AND THE GRANDAM OF LOTS 36 AND 37.



**THE MEAT
AND MUSCLE
SPECIALIST
BY 4U2!**

38

38 SINCLAIR BLACK IRON K502
REG: 20559907 | DOB: 02/06/22 | TATTOO: K502

Sinclair Executive 9XV2
Sinclair Exactly 4U2 17798945
Sinclair Lady OR109 0353

N Bar Emulation Ext V722
N Bar Primrose Y3051#
R R Rito 707#
Sinclair Lady 0353 4465
N Bar Emulation EXT#
N Bar Clova Pride U3031
Vance Top Dawg#
N Bar Miss Emulous A404

N Bar Emulation Ext A1747
Sinclair Ms Emulous 0V5 16649062
Sinclair Ms Emulous 7td11

Individual Performance					EPD's				
BW	ADJ. WW	WR	ADJ. YW	YR	CED	BW	WW	MILK	YW
82	561	104	1079	106	4	.0	46	19	76
Individual Performance				Mat	\$ Values				
ADG	Act. IMF	REA/100 lbs		\$EN	\$M	\$W	\$F	\$G	\$B
3.60	3.22	1.10		3	52	41	64	27	91

Dam's Production WR: 11 @ 103 YR: 9 @ 104

A really thick and moderate bull that has an appealing birth to yearling spread and is the kind that will sire them big-bodied, easy-keeping kind of cows we all enjoy.

39 SINCLAIR BLACK IRON K624
REG: *20548788 | DOB: 03/01/22 | TATTOO: K624

Sinclair Executive 9XV2
Sinclair Exactly 4U2 17798945
Sinclair Lady OR109 0353

N Bar Emulation Ext V722
N Bar Primrose Y3051#
R R Rito 707#
Sinclair Lady 0353 4465
Sinclair Patriarch 3B47
Sinclair Lady Ida 7V19 04F3
Sinclair In Time 9RT12
Sinclair Blkcap 1N14 9XT0#

Sinclair Plains Boss 5B02
Sinclair Blkcap 8L1 6NR16 19168746
Sinclair Blkcap 6NR16 1N14

Individual Performance					EPD's				
BW	ADJ. WW	WR	ADJ. YW	YR	CED	BW	WW	MILK	YW
90	608	101	1096	107	-1	1.7	46	19	80
Individual Performance				Mat	\$ Values				
ADG	Act. IMF	REA/100 lbs		\$EN	\$M	\$W	\$F	\$G	\$B
3.14	2.77	1.21		4	65	36	61	15	76

Dam's Production WR: 3 @ 109 YR: 2 @ 109

K624 is the eye-catching kind that is really thick and rugged and full of performance in a big-bodied, bold sprung package. His daughters will be tremendous maternal replacement females. His young dam, 8L1, is a top ratioing, beautiful uddered Plains Boss daughter. Check out the ribeye ratio on K624! This is a bull to add some real muscle!

**THE VERY BEST OF
4U2 GENETICS!**



SINCLAIR PLAINS BOSS 5B02, THE MATERNAL GRANDSIRE OF LOT 39.



39



40



SINCLAIR EXQUISITE K581
 REG: 20546287 | DOB: 02/20/22 | TATTOO: K581

N Bar Emulation EXT#
Sinclair Exquisite OX2 19919831
 Sinclair Lady 3M18 4465#

Emulation N Bar 5522#
 N Bar Primrose 2424
 N Bar Moderation 9957
 Ideal 4465 of 6807 4286
 Sinclair Extra 4X13#
 Sinclair Blkbird 70C10 J472
 Leachman Right Time#
 N Bar Primrose 4324B

Sinclair Emperor OXT51
Sinclair Primrose 7X07 3RT8# 18829797
 Sinclair Primrose 3RT8 D011

Individual Performance					EPD's				
BW	ADJ. WW	WR	ADJ. YW	YR	CED	BW	WW	MILK	YW
90	574	106	1104	108	3	1.7	41	24	75
Individual Performance				Mat	\$ Values				
ADG	Act. IMF	REA/100 lbs	SEN	SM	SW	SF	SG	SB	
3.86	3.16	.87	2	70	35	77	23	100	
Dam's Production WR: 4 @ 107					YR: 4 @ 107				

An elite Emulation herdsire prospect that will add incredible length, breed character, and performance with a balanced set of EPD traits. His phenomenal dam, 7X07, checks all the boxes in the black! 3RT8, the grandam, has long been a prestigious member of the program and derives from a long line of excellent Primrose cows. Serious Maternal breeders take notice here!

**PREMIER EMULATION
 PRIMROSE HERDSIRE
 PROSPECT!**



SINCLAIR PRIMROSE 3RT8 D011, A TRUE GENETIC GEM AND THE GRANDAM OF LOT 40.



SINCLAIR PRIMROSE 4234B "D011" FOUADATION THIRD DAM OF LOT 40

**THE MIRROR
IMAGE OF
EXQUISITE
OX2!**



41 SINCLAIR EXQUISITE K606

REG: *20548782 | DOB: 02/25/22 | TATTOO: K606

N Bar Emulation EXT#
Sinclair Exquisite OX2 19919831
Sinclair Lady 3M18 4465#

Emulation N Bar 5522#
N Bar Primrose 2424
N Bar Moderation 9957
Ideal 4465 of 6807 4286

Sinclair Broker 6RC2
Sinclair K Bty 8RG3 OJP11 19166664
Sinclair K Bty OJP11 5PV6#

Sinclair Entrepreneur 8R101
Sinclair Blkbird 9X59 2459#
Dunlouse Jipsej Earl E161#
Sinclair K Bty 5PV6 H426

Individual Performance					EPD's				
BW	ADJ. WW	WR	ADJ. YW	YR	CED	BW	WW	MILK	YW
86	652	108	1074	104	2	1.1	39	25	61
Individual Performance				Mat	\$ Values				
ADG	Act. IMF	REA/100 lbs	\$EN	\$M	\$W	\$F	\$G	\$B	
2.62	2.64	.99	9	76	40	60	17	77	

Dam's Production WR: 2 @ 111 YR: 2 @ 104

An exceptional prospect that closely resembles his sire, Exquisite OX2, the top-selling bull of 2021 selling to Brookhill Angus, KY. He's backed by solid producers of the Kinochtry Beauty cow family for many, many generations. The Emulation genetics are the best in the business for range-adapted functional cows who know how to get the job done for the long term.



42 SINCLAIR EXQUISITE K588

REG: *20570908 | DOB: 02/21/22 | TATTOO: K588

N Bar Emulation EXT#
Sinclair Exquisite OX2 19919831
Sinclair Lady 3M18 4465#

Emulation N Bar 5522#
N Bar Primrose 2424
N Bar Moderation 9957
Ideal 4465 of 6807 4286

Sinclair Dynasty 3WCD7
Sinclair Blkbird 7WC8 3006 18826243
Sinclair Blkbird 3006 OXM1#

Wandering CRK Dynasty JRM 2F#
Sinclair Eriskay 2N1 7883#
Basin Rainmaker 914A
Sinclair Blkbird OXM1 8XV8

Individual Performance					EPD's				
BW	ADJ. WW	WR	ADJ. YW	YR	CED	BW	WW	MILK	YW
80	613	100	1098	100	8	-5	36	22	58
Individual Performance				Mat	\$ Values				
ADG	Act. IMF	REA/100 lbs	\$EN	\$M	\$W	\$F	\$G	\$B	
3.09	2.75	1.14	13	79	36	56	20	76	

Dam's Production WR: 3 @ 97 YR: 2 @ 96

An intriguing herdsire prospect with a stellar, one-of-a-kind Maternal pedigree: EXT, Dynasty, and Rainmaker! Expect wonderful, longevity-oriented daughters that can work anywhere from this sire.

**THE COW-MAKER
SPECIALIST WITH
A RICH MATERNAL
HERITAGE!**



SINCLAIR DYNASTY 3WCD7, THE LONG-TIME SINCLAIR HERDSIRE AND MATERNAL GRANDSIRE OF LOT 42.



**LENGTH,
PERFORMANCE,
AND MATERNAL
BY 0X2!**

43



SINCLAIR EXQUISITE K583

REG: *20548775 | DOB: 02/20/22 | TATTOO: K583

N Bar Emulation EXT#
Sinclair Exquisite 0X2 19919831
Sinclair Lady 3M18 4465#

Ideal 4458 of 6807 5103
Sinclair K Bty 8RJ9 1P16 19166623
Sinclair K Bty 1P16 E118

Emulation N Bar 5522#
N Bar Primrose 2424
N Bar Moderation 9957
Ideal 4465 of 6807 4286
D H D Traveler 6807#
Eldorado 5103 Ideal 3167 156
N Bar Prime Time D806#
N Bar Kinochtry Beauty Z1925

Individual Performance					EPD's				
BW	ADJ. WW	WR	ADJ. YW	YR	CED	BW	WW	MILK	YW
78	636	105	1084	105	7	-4	37	23	68
Individual Performance				Mat	\$ Values				
ADG	Act. IMF	REA/100 lbs	SEN	\$M	\$W	\$F	\$G	\$B	
2.88	3.19	1.20	7	74	34	71	29	100	
Dam's Production WR: 3 @ 104 YR: 3 @ 105									

A really long-bodied, stacked pedigreed, high-growth sire with a very conservative birthweight. His third dam, N Bar Kinochtry Beauty Z1925 (E118) was a major N Bar and Sinclair foundation donor whose progeny are still very relevant today.



SINCLAIR EXQUISITE K608

REG: *20548783 | DOB: 02/25/22 | TATTOO: K608

N Bar Emulation EXT#
Sinclair Exquisite 0X2 19919831
Sinclair Lady 3M18 4465#

Sinclair Exquisite 6X2
Sinclair Blkbird 8XA9 OJP17 19281330
Sinclair Blkbird OJP17 6X3

Emulation N Bar 5522#
N Bar Primrose 2424
N Bar Moderation 9957
Ideal 4465 of 6807 4286
N Bar Emulation EXT#
Sinclair Ms Emulous 7RT5
Dunlouse Jipsey Earl E161#
Sinclair Blkbird 6X3 2P8#

Individual Performance					EPD's				
BW	ADJ. WW	WR	ADJ. YW	YR	CED	BW	WW	MILK	YW
88	632	105	1032	101	3	1.0	33	22	52
Individual Performance				Mat	\$ Values				
ADG	Act. IMF	REA/100 lbs	SEN	\$M	\$W	\$F	\$G	\$B	
2.77	3.17	.94	14	75	31	49	17	66	
Dam's Production WR: 3 @ 94 YR: 1 @ 101									



REF SIRE SINCLAIR EXQUISITE 0X2

REG: 19919831 | DOB: 02/13/20 | TATTOO: 0X2

Emulation N Bar 5522#
N Bar Emulation EXT 10776479#
N Bar Primrose 2424

N Bar Moderation 9957
Sinclair Lady 3M18 4465# 14489949
Ideal 4465 of 6807 4286

Emulation 31#
Ankony 8F78 Lass 8F275
Emulation 31#
Primrose N Bar 9962
N Bar Moderation 9955#
N Bar Queen Mother 6079
D H D Traveler 6807#
E E 4286 of Ideal 2240 1254

CED	BW	WW	YW	SC	MILK	DOC	MARB	REA	\$M	\$W	\$F	\$B	\$C
5	0.0	33	52	-.84	18	18	.14	-.05	67	34	61	79	169

0X2 was the \$19,000 top-selling bull of the 2021 sale to Brookhill Angus, KY. He closely resembles and follows the genetic and phenotypic attributes of his famous sire, EXT. His first progeny ratios are CE 1.0 BW 97 WW 99 YW 104.



45



SINCLAIR X-PLUS K611

REG: *20548784 | DOB: 02/26/22 | TATTOO: K611

N Bar Emulation EXT#
Sinclair Emulation XXP 15355048#
 N Bar Primrose Y3051#

Emulation N Bar 5522#
 N Bar Primrose 2424
 N Bar Emulation EXT#
 N Bar Primrose 2429#
 R R Rito 707#
 N Bar Kinochtry Beauty Z1925
 Sinclair Rito Legacy 3R9
 Sinclair Lady 1C8 4465

Sinclair Entrepreneur 8R101
Sinclair Lady 8RC4 7RL30 19364730
 Sinclair Lady 7RL30 1C8

Individual Performance					EPD's				
BW	ADJ. WW	WR	ADJ. YW	YR	CED	BW	WW	MILK	YW
90	680	113	1157	113	-2	2.9	56	20	99
Individual Performance				Mat	\$ Values				
ADG	Act. IMF	REA/100 lbs	\$EN	\$M	\$W	\$F	\$G	\$B	
3.15	2.70	.94	-17	28	40	71	25	95	
Dam's Production WR: 3 @ 105					YR: 1 @ 113				

An outstanding herdsire prospect. The kind that made XXP famous! A chart-busting performance bull that's big-bodied, and easy fleshing. It comes naturally from his Entrepreneur/Rito Legacy dam that's a daughter of the famous Lady 1C8 donor.

ELITE XXP HERDSIRE PROSPECT!



SINCLAIR LADY 1C8 4465, THE FAMOUS GREAT GRANDAM OF LOT 45.



SINCLAIR LADY 7RL30 1C8, THE THIRD GENERATION SINCLAIR LADY DONOR AND THE GRANDAM OF LOT 45.



46 SINCLAIR X-PLUS K015
REG: 20551890 | DOB: 02/27/22 | TATTOO: K015

N Bar Emulation EXT#
Sinclair Emulation XXP 15355048#
N Bar Primrose Y3051#

N Bar Explosion#
Sinclair Blackcap 5E5 2N10 14969782
Sinclair Blackcap 2N10 7856

Emulation N Bar 5522#
N Bar Primrose 2424
N Bar Emulation EXT#
N Bar Primrose 2429#
N Bar Emulation EXT#
N Bar Kinochtry Beauty 4288
D H D Traveler 6807#
Papa Blackcap Mc Henry 7856#

Individual Performance					EPD's				
BW	ADJ. WW	WR	ADJ. YW	YR	CED	BW	WW	MILK	YW
ET	579	101	1006	96	3	.6	37	25	67
Individual Performance				Mat	\$ Values				
ADG	Act. IMF	REA/100 lbs	SEN	\$M	\$W	\$F	\$G	\$B	
3.13	3.81	1.01	-1	44	36	65	38	104	
Dam's Production WR: 13 @ 105 YR: 10 @ 101									

47 SINCLAIR EXQUISITE K602
REG: *20548780 | DOB: 02/24/22 | TATTOO: K602

N Bar Emulation EXT#
Sinclair Exquisite 9X93 20254570
N Bar Primrose Y3051#

Sinclair Executive 9XV2
Sinclair Pride 9U2 5DY1 19475390
Sinclair Pride 5DY1 2188

Emulation N Bar 5522#
N Bar Primrose 2424
N Bar Emulation EXT#
N Bar Primrose 2429#
N Bar Emulation Ext V722
N Bar Primrose Y3051#
Ankonian Dynamo#
Sitz Pride 2188

Individual Performance					EPD's				
BW	ADJ. WW	WR	ADJ. YW	YR	CED	BW	WW	MILK	YW
96	652	108	1198	117	-3	3.6	52	19	101
Individual Performance				Mat	\$ Values				
ADG	Act. IMF	REA/100 lbs	SEN	\$M	\$W	\$F	\$G	\$B	
3.56	2.95	1.03	-13	45	30	78	20	98	
Dam's Production WR: 2 @ 103 YR: 2 @ 108									

A big-time performance sire that's double bred to XXP's dam top and bottom. A bull that will cover a lot of bases.

SINCLAIR EXECUTIVE 9XV2, THE MATERNAL GRANDSIRE OF LOT 47.



48 SINCLAIR EXQUISITE K594
REG: *20548777 | DOB: 02/22/22 | TATTOO: K594

N Bar Emulation EXT#
Sinclair Exquisite 9X93 20254570
N Bar Primrose Y3051#

Sinclair Elation 6SX1
Sinclair K Bty 9SG2 7U51 19475305
Sinclair K Bty 7U51 9P32

Emulation N Bar 5522#
N Bar Primrose 2424
N Bar Emulation EXT#
N Bar Primrose 2429#
Sinclair Vision 3SX12
Sinclair C Pride 2G72 7X34
Sinclair Executive 9XV2
Sinclair K Bty 9P32 V149#

Individual Performance					EPD's				
BW	ADJ. WW	WR	ADJ. YW	YR	CED	BW	WW	MILK	YW
70	595	99	1150	112	8	-1.2	42	24	87
Individual Performance				Mat	\$ Values				
ADG	Act. IMF	REA/100 lbs	SEN	\$M	\$W	\$F	\$G	\$B	
3.47	3.97	1.15	-12	52	37	72	26	98	
Dam's Production WR: 2 @ 104 YR: 2 @ 111									

A heifer bull with excellent performance backed by the total program cow, V149!

49 SINCLAIR EXQUISITE K596
REG: *20548778 | DOB: 02/23/22 | TATTOO: K596

N Bar Emulation EXT#
Sinclair Exquisite 9X93 20254570
N Bar Primrose Y3051#

Sinclair Sun Dial 5TL43
Sinclair Ms Emulous 9TG7 19472601
Sinclair Ms Emulous 1P14 D47#

Emulation N Bar 5522#
N Bar Primrose 2424
N Bar Emulation EXT#
N Bar Primrose 2429#
Sinclair Timeless 8BA4#
Sinclair Primrose 1G13 6E11#
N Bar Prime Time D806#
N Bar Miss Emulous B514

Individual Performance					EPD's				
BW	ADJ. WW	WR	ADJ. YW	YR	CED	BW	WW	MILK	YW
82	629	104	1146	111	6	.0	43	27	84
Individual Performance				Mat	\$ Values				
ADG	Act. IMF	REA/100 lbs	SEN	\$M	\$W	\$F	\$G	\$B	
2.60	3.12	1.27	-6	57	41	67	21	89	
Dam's Production WR: 1 @ 104 YR: 1 @ 111									

A curve bender-type bull with low birth to added performance. Check out this bull's ribeye area, and don't forget his maternal heritage.

50 SINCLAIR EXQUISITE K627
REG: *20548789 | DOB: 03/03/22 | TATTOO: K627

N Bar Emulation EXT#
Sinclair Exquisite 9X93 20254570
N Bar Primrose Y3051#

Sinclair Rollin Coal 5K2
Sinclair K Bty 9KF11 5OC8 19475110
Sinclair K Bty 5OC8 3TL51#

Emulation N Bar 5522#
N Bar Primrose 2424
N Bar Emulation EXT#
N Bar Primrose 2429#
Sinclair Broker 3RC33
Sinclair Ms Emulous 1FE23
O C C Great Plains 943G#
Sinclair K Bty 3TL51 1A15

Individual Performance					EPD's				
BW	ADJ. WW	WR	ADJ. YW	YR	CED	BW	WW	MILK	YW
88	634	105	1146	111	4	.8	44	23	87
Individual Performance				Mat	\$ Values				
ADG	Act. IMF	REA/100 lbs	SEN	\$M	\$W	\$F	\$G	\$B	
3.32	3.12	.95	-7	52	36	67	25	92	
Dam's Production WR: 2 @ 103 YR: 2 @ 108									

9X93 is a lesser known, young full brother to XXP we retained to use as a natural herdsire, and he has worked quite well. These sons check the boxes for convenience traits.





SINCLAIR EXQUISITE K541

REG: 20546281 | DOB: 02/14/22 | TATTOO: K541

N Bar Emulation EXT#
Sinclair Exquisite 9X93 20254570
N Bar Primrose Y3051#

Sinclair Black Iron 7UR26
Sinclair Primrose 9UF2 5R47 19472547
Sinclair Primrose 5R47 D011

Emulation N Bar 5522#
N Bar Primrose 2424
N Bar Emulation EXT#
N Bar Primrose 2429#
Sinclair Exactly 4U2
Sinclair Erica 2FE2 8BT12
N Bar Prime Time D806#
N Bar Primrose 4324B

Individual Performance					EPD's				
BW	ADJ. WW	WR	ADJ. YW	YR	CED	BW	WW	MILK	YW
88	574	106	1092	107	0	3.0	48	23	87
Individual Performance				Mat	\$ Values				
ADG	Act. IMF	REA/100 lbs	\$EN	\$M	\$W	\$F	\$G	\$B	
3.76	3.26	1.02	-2	49	36	73	28	101	

Dam's Production WR: 2 @ 104 YR: 2 @ 106

Check out this stout 9X93 son backed by a top 7UR26 daughter out of a foundation Primrose cow. He hits the performance and IMF targets and will leave excellent replacements.



SINCLAIR BLACK IRON 7UR26, A FEATURED HERDSIRE IN THE SINCLAIR PROGRAM AND THE MATERNAL GRANDSIRE OF LOT 51.



N BAR PRIMROSE 4324B, A SINCLAIR FOUNDATION DONOR AND THE GREAT GRANDAM OF LOT 51.



SINCLAIR EXQUISITE K629

REG: *20548790 | DOB: 03/06/22 | TATTOO: K629

N Bar Emulation EXT#
Sinclair Exquisite 9X93 20254570
N Bar Primrose Y3051#

Sinclair Piney Creek 5FV5
Sinclair Ms Wix 9FF18 6FX15 19475270
Sinclair Ms Wix 6FX15 3S1

Emulation N Bar 5522#
N Bar Primrose 2424
N Bar Emulation EXT#
N Bar Primrose 2429#
Sinclair X-Changer 2FE9
Sinclair Ms Emulous 8F12
Sinclair Emulation 0F4
Sinclair Ms Wix 3S1 2022

Individual Performance					EPD's				
BW	ADJ. WW	WR	ADJ. YW	YR	CED	BW	WW	MILK	YW
88	602	100	1140	111	1	2.3	46	21	92
Individual Performance				Mat	\$ Values				
ADG	Act. IMF	REA/100 lbs	\$EN	\$M	\$W	\$F	\$G	\$B	
3.48	4.10	1.13	-8	51	31	70	32	103	

Dam's Production WR: 2 @ 104 YR: 2 @ 111



SINCLAIR EXQUISITE K540

REG: 20559909 | DOB: 02/14/22 | TATTOO: K540

N Bar Emulation EXT#
Sinclair Exquisite 9X93 20254570
N Bar Primrose Y3051#

Sinclair Sun Dial 5TL43
Sinclair Edella 9TG10 5XX17 19472598
Sinclair Edella 5XX17 10K1

Emulation N Bar 5522#
N Bar Primrose 2424
N Bar Emulation EXT#
N Bar Primrose 2429#
Sinclair Timeless 8BA4#
Sinclair Primrose 1G13 6E11#
Sinclair Emulation XXP#
Sinclair Edella 10K1 7X53

Individual Performance					EPD's				
BW	ADJ. WW	WR	ADJ. YW	YR	CED	BW	WW	MILK	YW
76	640	100	1058	100	4	.5	44	25	78
Individual Performance				Mat	\$ Values				
ADG	Act. IMF	REA/100 lbs	\$EN	\$M	\$W	\$F	\$G	\$B	
2.81	3.17	1.15	-2	61	42	62			

Dam's Production WR: 1 @ 100 YR: 1 @ 100



REF SIRE

CONNEALY SPUR#

REG: 17304082 | DOB: 1/31/2012 | TATTOO: 2363

H A Power Alliance 1025#
Connealy Stimulus 8419 16205004#
Black Creesa of Conanga 5332

TC Grid Topper 355#
Jazza of Conanga 8594# 16207100
Jemma of Conanga 5614

Sitz Alliance 6595#
Sitz Alliance 6595
G A R Grid Maker#
Black Crust of Conanga
G A R Grid Maker
TC Pride 8067
B A R Ext Traveler 205
B A R Ext Traveler 205

CED	BW	WW	YW	SC	MILK	DOC	MARB	REA	SM	\$W	\$F	\$B	SC
5	3.9	69	120	1.56	29	25	.70	.54	90	30	60	11	277

Spur was chosen to enhance performance, muscling, and docility to the Sinclair program. He adds frame, length, muscle, and overall pounds. He has worked very well in commercial programs in the West and offers an outcross for our customers. Our first Spur daughters in production are a sight to behold.





SINCLAIR SPUR K305

REG: *20400571 | DOB: 03/05/22 | TATTOO: K305

Connealy Stimulus 8419#
Connealy Spur 17304082#
Jazza of Conanga 8594#

H A Power Alliance 1025#
Black Creeza of Conanga 5332
TC Grid Topper 355#
Jemma of Conanga 5614
Sinclair Timeless 8BA4#
Sinclair K Bty 2X7 6MB8#
Sinclair Emulation XXP#
Sinclair Enchantress 9A37

Sinclair Sun Dial 4TL2
Sinclair Enchantress 6TT4 18506538
Sinclair Enchantress 4XX8

Individual Performance					EPD's				
BW	ADJ. WW	WR	ADJ. YW	YR	CED	BW	WW	MILK	YW
90	709	118	1063	104	6	1.2	54	31	91
Individual Performance				Mat	\$ Values				
ADG	Act. IMF	REA/100 lbs	\$EN	\$M	\$W	\$F	\$G	\$B	
2.39	4.36	1.07	-7	82	56	73	46	119	

Dam's Production WR: 5 @ 109 YR: 4 @ 102



SINCLAIR SPUR K335

REG: *20400579 | DOB: 03/08/22 | TATTOO: K335

Connealy Stimulus 8419#
Connealy Spur 17304082#
Jazza of Conanga 8594#

H A Power Alliance 1025#
Black Creeza of Conanga 5332
TC Grid Topper 355#
Jemma of Conanga 5614
Sinclair Timeless 8BA4#
Sinclair K Bty 0A3 7XT55
Sinclair Fortunate Son#
Sinclair Primrose 9XT5 7FF3

Sinclair Preview 2TL6
Sinclair Primrose 7TA15 2D5 18826218
Sinclair Primrose 2D5 9XT5#

Individual Performance					EPD's				
BW	ADJ. WW	WR	ADJ. YW	YR	CED	BW	WW	MILK	YW
85	657	109	1070	104	7	.7	53	26	87
Individual Performance				Mat	\$ Values				
ADG	Act. IMF	REA/100 lbs	\$EN	\$M	\$W	\$F	\$G	\$B	
2.77	2.89	1.00	3	91	52	61	31	92	

Dam's Production WR: 4 @ 97 YR: 2 @ 105



EMULATION N BAR 5522, THE HIGHLY REGARDED CALVING EASE AND FEMALE MAKER THAT IS THE SIRE OF LOTS 56 AND 57.

EXCITING COWMAKER HEIFER BULLS BY 5522!



SINCLAIR EMULATION K37

REG: *20434673 | DOB: 02/13/22 | TATTOO: K37

Emulation 31#
Emulation N Bar 5522 10095639#
Ankony 8F78 Lass 8F275

F C R Elation Lad 652
Miss Emulous 243
Ankonian Dynamo 27542
Ankony B999 Lass 26832
Sinclair Emperor 0XT51
Sinclair Ms Emulous 2V20 A40
Cole Creek Cedar Ridge 1V#
Sitz Pride 2188

Sinclair Emperor 6XO2
Sinclair Pride 00V22 5CR14 19981727
Sinclair Pride 5CR14 2188

Individual Performance					EPD's				
BW	ADJ. WW	WR	ADJ. YW	YR	CED	BW	WW	MILK	YW
83	587	97	1077	105	1	1.2	41	18	77
Individual Performance				Mat	\$ Values				
ADG	Act. IMF	REA/100 lbs	\$EN	\$M	\$W	\$F	\$G	\$B	
3.19	3.06	.85	8	65	30	62	17	79	

Dam's Production WR: 1 @ 97 YR: 1 @ 105



SINCLAIR EMULATION K27

REG: *20434681 | DOB: 02/11/22 | TATTOO: K27

Emulation 31#
Emulation N Bar 5522 10095639#
Ankony 8F78 Lass 8F275

F C R Elation Lad 652
Miss Emulous 243
Ankonian Dynamo 27542
Ankony B999 Lass 26832
Sinclair Timeless 8BA4#
Sinclair Primrose 1G13 6E11#
Basin Rainmaker 914A
Basin Pamella F271

Sinclair Sun Dial 5TL43
Sinclair Pamela 0TG18 2001 19981200
Sinclair Pamela 2001 F271

Individual Performance					EPD's				
BW	ADJ. WW	WR	ADJ. YW	YR	CED	BW	WW	MILK	YW
88	619	103	1094	107	-1	1.5	34	24	65
Individual Performance				Mat	\$ Values				
ADG	Act. IMF	REA/100 lbs	\$EN	\$M	\$W	\$F	\$G	\$B	
3.14	2.93	.91	9	62	29	58	17	75	

Dam's Production WR: 1 @ 103 YR: 1 @ 107

Only two 5522 sons in the sale this year, but we feel they deserve your attention if you desire range adaptable, intelligent cows that work for a living and last a long time. K37 excelled in the yearling phase.

An own son of 5522 out of a young daughter of the Pamela cow, 2001, who is a true genetic gem. An outstanding calving ease, maternal heritage bull here.

SINCLAIR PAMELA
2001 F271, A SINCLAIR
HERD TREASURE
AND THE MATERNAL
GRANDAM OF LOT 57.





REF SIRE SINCLAIR TIMELESS 8BA4#
 REG: 16027579 | DOB: 2/10/08 | TATTOO: 8BA4

BT Right Time 24J#
Sinclair IN Time 6BT39 15366581
 N Bar Miss Emulous A404

N Bar Prime Time D806#
Sinclair Blackbird 2P8 7079# 14339897
 Rito 707 of Ideal 089 7076

Leachman Right Time#
 Sitz Everelda Entense 1905
 N Bar Emulation Ext Z52
 N Bar Miss Emulous X3091#

Gardens Prime Time#
 N Bar Miss Emulous A404#
 R R Rito 707#
 Ideal 089 of 8103 7394

CED	BW	WW	YW	SC	MILK	DOC	MARB	REA	\$M	\$W	\$F	\$B	\$C
14	-4.7	21	53	.07	34	7	.39	-1.0	38	32	67	94	160

Timeless is a rock solid, "go to" highly proven heifer bull who is a universal breeding tool. He makes exceptional females that work for a living in range environments. This pathfinder sire's progeny ratios are BW-96 WW -98 YW -101 And has 134 daughters avg nursing ratio at a 102.

58 SINCLAIR TIMELESS K347
 REG: *20561686 | DOB: 03/11/22 | TATTOO: K347

Sinclair IN Time 6BT39
Sinclair Timeless 8BA4 16027579#
 Sinclair Blackbird 2P8 7079#

BT Right Time 24J#
 N Bar Miss Emulous A404
 N Bar Prime Time D806#
 Rito 707 of Ideal 089 7076

N Bar Emulation Ext V722
 N Bar Primrose Y3051#
 Sinclair Entrepreneur 8R101
 Sinclair Eilee 7X46 L228

Sinclair Executive 9XV2
Sinclair Eileen 6U87 1 RC13 18770787
 Sinclair Eileen 1RC13 7X46

Individual Performance					EPD's				
BW	ADJ. WW	WR	ADJ. YW	YR	CED	BW	WW	MILK	YW
98	641	106	1121	109	3	.5	42	25	84
Individual Performance					\$ Values				
ADG	Act. IMF	REA/100 lbs	Mat	SEN	\$M	\$W	\$F	\$G	\$B
3.17	2.74	.94	-2	51	37	76	27	103	
Dam's Production WR: 5 @ 100					YR: 2 @ 109				

Timeless is a universal breeding tool from calving ease to excellent cow production. K347 was at the top of the charts for growth with an excellent maternal background.

59 SINCLAIR TIMELESS K572
 REG: 20546295 | DOB: 02/20/22 | TATTOO: K572

Sinclair IN Time 6BT39
Sinclair Timeless 8BA4 16027579#
 Sinclair Blackbird 2P8 7079#

BT Right Time 24J#
 N Bar Miss Emulous A404
 N Bar Prime Time D806#
 Rito 707 of Ideal 089 7076

N Bar Emulation EXT#
Sinclair Pamella 0X11 F271 20559910
 Basin Pamella F271

Emulation N Bar 5522#
 N Bar Primrose 2424
 Basin Rainmaker 654X#
 Basin Pamella 676X#

Individual Performance					EPD's				
BW	ADJ. WW	WR	ADJ. YW	YR	CED	BW	WW	MILK	YW
80	633	117	1139	112	7	-.6	38	34	74
Individual Performance					\$ Values				
ADG	Act. IMF	REA/100 lbs	Mat	SEN	\$M	\$W	\$F	\$G	\$B
3.81	2.56	1.08	-5	45	44	65	20	85	
Dam's Production WR: 1 @ 117					YR: 1 @ 112				

Exceptional calving ease herdsire prospect! K572 is a son of the only full sister to the genetic gem, Exquisite 0X3. Expect added performance from birth to weaning and daughters that will have a rock-solid maternal base.

**TIMELESS,
 GENETIC GEM,
 HEIFER BULL!**



SINCLAIR EXQUISITE 0X3, THE FULL BROTHER TO THE DAM OF LOT 59.



59



**THE
COWMAN'S
KIND OF
HEIFER BULL!**



61



SINCLAIR JUSTIFIED K317
REG: *20400577 | DOB: 03/05/22 | TATTOO: K317

Connealy Judgment
KG Justified 3023 17707279#
KG Miss Magic 1443

Sinclair Vision 35X12
Sinclair Ms Emulous 75X18 18807048
Sinclair Ms Emulous 50C14

Connealy Consensus 7229#
Entrine of Conanga 9876#
Sitz Wisdom 481T#
KG Miss Magic 3528
Sinclair Vision X 8S7
Sinclair K Bty 0F1 2V3
O C C Great Plains 943G#
Sinclair Ms Emulous 3TL26

Individual Performance					EPD's				
BW	ADJ. WW	WR	ADJ. YW	YR	CED	BW	WW	MILK	YW
90	606	100	1105	107	8	-.4	51	28	97
Individual Performance				Mat	\$ Values				
ADG	Act. IMF	REA/100 lbs	\$EN	\$M	\$W	\$F	\$G	\$B	\$C
3.50	3.61	1.05	-7	81	49	70	52	122	
Dam's Production WR: 4 @ 103					YR: 4 @ 104				



SINCLAIR JUSTIFIED K516
REG: 20553680 | DOB: 02/09/22 | TATTOO: K516

Connealy Judgment
KG Justified 3023 17707279#
KG Miss Magic 1443

Sinclair Rollin Coal 5K2
Sinclair C Pride 7KF4 4AR1 18982427
Sinclair C Pride 4AR1 2D1

Connealy Consensus 7229#
Entrine of Conanga 9876#
Sitz Wisdom 481T#
KG Miss Magic 3528
Sinclair Broker 3RC33
Sinclair Ms Emulous 1FE23
Sinclair Emulation 0A2
Sinclair C Pride 2D1 7XT19#

Individual Performance					EPD's				
BW	ADJ. WW	WR	ADJ. YW	YR	CED	BW	WW	MILK	YW
80	511	94	1050	103	9	-1.5	46	23	83
Individual Performance				Mat	\$ Values				
ADG	Act. IMF	REA/100 lbs	\$EN	\$M	\$W	\$F	\$G	\$B	\$C
3.92	3.81	1.00	8	87	44	59	50	108	
Dam's Production WR: 2 @ 92					YR: 2 @ 98				

A true heifer bull prospect that is smooth-fronted and catches your eye while evaluating a big pen of bulls.

**REF
SIRE**

KG JUSTIFIED 3023#
REG: 17707279 | DOB: 1/21/2013 | TATTOO: 3023

KG Miss Magic 1443#
Connealy Judgment 17031468
Entrine of Conanga 9876#

Sitz Wisdom 481T#
KG Miss Magic 1443 17127788
KG Miss Magic 3528

Connealy Consensus#
Blue Lilly of Conanga 16
Rito 6EMA of 4L3 Emblazon#
Entrance of Conanga 206#
Connealy Onward#
Sitz Elluna Elite 94P
KG Traveler 8180 8171
KG Miss Magic 6560

CED	BW	WW	YW	SC	MILK	DOC	MARB	REA	\$M	\$W	\$F	\$B	\$C
12	-2.0	61	108	1.74	30	22	1.16	.31	93	80	71	140	275

After seeing Justified at stud, we felt he would really enhance our program from a phenotype and consistency standpoint. This is the second year of large sire group of Justified sons, and the extreme consistency is for real. They maintain light birth weight and well above average growth and carcass traits. He is a \$M leader and offers added milk as well. They are a good-footed, do-it-all kind of bulls. We collected a couple sale feature sons last year and used them back in the program. His first daughters in production at Sinclair are brood cows deluxe!



62 SINCLAIR JUSTIFIED K278
REG: *20400540 | DOB: 03/03/22 | TATTOO: K278

Connealy Judgment
KG Justified 3023 17707279#
KG Miss Magic 1443

Connealy Consensus 7229#
Entrine of Conanga 9876#
Sitz Wisdom 481T#
KG Miss Magic 3528
N Bar Emulation EXT#
N Bar Primrose Y3051#
Emulation 31#
Sinclair Pride 7XT11 5H7

Sinclair Emulation XXP#
Sinclair Pride 4XX7 0A9 17821728
Sinclair Pride 0A9 7XT11

Individual Performance					EPD's				
BW	ADJ. WW	WR	ADJ. YW	YR	CED	BW	WW	MILK	YW
82	570	95	1101	108	9	-1.2	48	25	92
Individual Performance				Mat	\$ Values				
ADG	Act. IMF	REA/100 lbs		\$EN	\$M	\$W	\$F	\$G	\$B
3.51	4.21	1.11		-3	81	45	78	57	135

Dam's Production WR: 7 @ 99 YR: 6 @ 104

65 SINCLAIR JUSTIFIED K297
REG: *20400539 | DOB: 03/04/22 | TATTOO: K297

Connealy Judgment
KG Justified 3023 17707279#
KG Miss Magic 1443

Connealy Consensus 7229#
Entrine of Conanga 9876#
Sitz Wisdom 481T#
KG Miss Magic 3528
Emulation N Bar 5522#
N Bar Primrose 2424
Sinclair Rito Legacy 3R9
Rito Majesty 718 of 6844

N Bar Emulation EXT#
Sinclair Blkbird 4X5 7RL33 17830673
Sinclair Blkbird 7RL33 718#

Individual Performance					EPD's				
BW	ADJ. WW	WR	ADJ. YW	YR	CED	BW	WW	MILK	YW
87	616	102	1040	101	6	1.5	48	28	87
Individual Performance				Mat	\$ Values				
ADG	Act. IMF	REA/100 lbs		\$EN	\$M	\$W	\$F	\$G	\$B
3.02	2.50	1.05		1	72	47	67	44	111

Dam's Production WR: 7 @ 104 YR: 6 @ 105

63 SINCLAIR JUSTIFIED K78
REG: *20423342 | DOB: 02/23/22 | TATTOO: K78

Connealy Judgment
KG Justified 3023 17707279#
KG Miss Magic 1443

Connealy Consensus 7229#
Entrine of Conanga 9876#
Sitz Wisdom 481T#
KG Miss Magic 3528
Cole Creek Black Cedar 46P#
Cole Creek Clovanada 495#
N Bar Emulation EXT#
N Bar Enchantress X4129

Cole Creek Cedar Ridge 1V#
Sinclair Enchantress 5CR7 18154694
Sinclair Enchantress 3X10

Individual Performance					EPD's				
BW	ADJ. WW	WR	ADJ. YW	YR	CED	BW	WW	MILK	YW
89	648	107	1046	102	6	.7	50	31	85
Individual Performance				Mat	\$ Values				
ADG	Act. IMF	REA/100 lbs		\$EN	\$M	\$W	\$F	\$G	\$B
2.69	2.95	.93		1	91	53	64	44	108

Dam's Production WR: 4 @ 113 YR: 2 @ 104



N BAR EMULATION EXT, THE MOST INFLUENTIAL BULL IN THE BREED THE PAST CENTURY AND THE MATERNAL GRANDSIRE OF LOT 65.

64 SINCLAIR JUSTIFIED K152
REG: *20423353 | DOB: 03/07/22 | TATTOO: K152

Connealy Judgment
KG Justified 3023 17707279#
KG Miss Magic 1443

Connealy Consensus 7229#
Entrine of Conanga 9876#
Sitz Wisdom 481T#
KG Miss Magic 3528
Gardens Prime Time#
N Bar Miss Emulous A404
N Bar Shadow X4124
N Bar Clova Pride 3626

N Bar Prime Time D806#
Sinclair C Pride 2P10 J355 17218797
N Bar Clova Pride F2839#

Individual Performance					EPD's				
BW	ADJ. WW	WR	ADJ. YW	YR	CED	BW	WW	MILK	YW
84	601	100	1108	108	5	.4	49	26	91
Individual Performance				Mat	\$ Values				
ADG	Act. IMF	REA/100 lbs		\$EN	\$M	\$W	\$F	\$G	\$B
3.44	3.29	1.04		-1	66	48	81	53	134

Dam's Production WR: 9 @ 102 YR: 7 @ 104



N BAR CLOVA PRIDE F2839, A FOUNDATION SINCLAIR DONOR AND THE MATERNAL GRANDAM OF LOT 64.

66 SINCLAIR JUSTIFIED K255
REG: *20400559 | DOB: 02/27/22 | TATTOO: K255

Connealy Judgment
KG Justified 3023 17707279#
KG Miss Magic 1443

Connealy Consensus 7229#
Entrine of Conanga 9876#
Sitz Wisdom 481T#
KG Miss Magic 3528
Sinclair Emulate 7XT28
Sinclair Blackbird 2P8 7079#
Sinclair Emulation XXP#
Sinclair Lady Ida 7V19 04F3

Sinclair Fortunate Son#
Sinclair Lady Ida 6D2 1XX5 18486025
Sinclair Lady Ida 1XX5 7V19

Individual Performance					EPD's				
BW	ADJ. WW	WR	ADJ. YW	YR	CED	BW	WW	MILK	YW
84	594	99	1021	100	6	.3	49	26	89
Individual Performance				Mat	\$ Values				
ADG	Act. IMF	REA/100 lbs		\$EN	\$M	\$W	\$F	\$G	\$B
2.96	4.74	1.14		3	88	46	71	59	130

Dam's Production WR: 5 @ 102 YR: 4 @ 103



SINCLAIR LADY IDA 7V19 04F3, THE LEGENDARY THIRD DAM OF LOT 66.



SINCLAIR JUSTIFIED K333
REG: *20400537 | DOB: 03/08/22 | TATTOO: K333

Connealy Judgment
KG Justified 3023 17707279#
KG Miss Magic 1443

Sinclair Emulation OF4
Sinclair K Bty 4FX25 8R31 17941940
Sinclair K Bty 8R31 04M3

Connealy Consensus 7229#
Etrine of Conanga 9876#
Sitz Wisdom 481T#
KG Miss Magic 3528
Emulation N Bar 5522#
N Bar Kinochtry Bty SCC 2V3#
Rito Revolve OR5
Sinclair K Beauty 04M3 E118

Individual Performance					EPD's				
BW	ADJ. WW	WR	ADJ. YW	YR	CED	BW	WW	MILK	YW
83	613	102	1040	101	7	-2	51	26	88
Individual Performance				Mat	\$ Values				
ADG	Act. IMF	REA/100 lbs	SEN	\$M	\$W	\$F	\$G	\$B	
2.78	3.47	1.22	-1	71	50	62	51	113	
Dam's Production WR: 6 @ 107 YR: 4 @ 108									



SINCLAIR JUSTIFIED K107
REG: *20423329 | DOB: 02/28/22 | TATTOO: K107

Connealy Judgment
KG Justified 3023 17707279#
KG Miss Magic 1443

N Bar Emulation EXT#
Sinclair Lady 7X14 3T9 18835174
Sinclair Lady 3T9 4465#

Connealy Consensus 7229#
Etrine of Conanga 9876#
Sitz Wisdom 481T#
KG Miss Magic 3528
Emulation N Bar 5522#
N Bar Primrose 2424
N Bar Explosion TNT#
Ideal 4465 of 6807 4286

Individual Performance					EPD's				
BW	ADJ. WW	WR	ADJ. YW	YR	CED	BW	WW	MILK	YW
86	570	95	1004	98	6	-2	44	25	78
Individual Performance				Mat	\$ Values				
ADG	Act. IMF	REA/100 lbs	SEN	\$M	\$W	\$F	\$G	\$B	
2.94	2.45	1.04	7	70	43	63	38	101	
Dam's Production WR: 4 @ 100 YR: 2 @ 96									



SINCLAIR JUSTIFIED K272
REG: *20423332 | DOB: 03/02/22 | TATTOO: K272

Connealy Judgment
KG Justified 3023 17707279#
KG Miss Magic 1443

Sinclair Dynasty 3WCD7
Sinclair Enchantress 7WC37 18826277
Sinclair Enchantress 1JP11#

Connealy Consensus 7229#
Etrine of Conanga 9876#
Sitz Wisdom 481T#
KG Miss Magic 3528
Wandering CRK Dynasty JRM 2F#
Sinclair Eriskay 2N1 7883#
Dunlouse Jipsey Earl E161#
Sinclair Enchantress 8V10

Individual Performance					EPD's				
BW	ADJ. WW	WR	ADJ. YW	YR	CED	BW	WW	MILK	YW
85	632	105	1014	99	9	-4	46	28	76
Individual Performance				Mat	\$ Values				
ADG	Act. IMF	REA/100 lbs	SEN	\$M	\$W	\$F	\$G	\$B	
2.41	2.64	1.07	6	93	49	59	39	99	
Dam's Production WR: 4 @ 98 YR: 2 @ 102									



SINCLAIR LADY 3T9 4465, A 2ND GENERATION SINCLAIR DONOR AND GRANDAM OF LOT 70.



ANKONIAN DYNAMO, THE FAMOUS MATERNAL GRANDSIRE OF LOT 69.



SINCLAIR JUSTIFIED K77
REG: *20423338 | DOB: 02/22/22 | TATTOO: K77

Connealy Judgment
KG Justified 3023 17707279#
KG Miss Magic 1443

Ankonian Dynamo#
Sinclair Pride 5DY1 2188 18299732
Sitz Pride 2188

Connealy Consensus 7229#
Etrine of Conanga 9876#
Sitz Wisdom 481T#
KG Miss Magic 3528
Emulous Pride 70
Miss Emulous B
N Bar Emulation EXT#
Sitz Pride 838#

Individual Performance					EPD's				
BW	ADJ. WW	WR	ADJ. YW	YR	CED	BW	WW	MILK	YW
69	558	93	998	97	11	-2.9	38	24	69
Individual Performance				Mat	\$ Values				
ADG	Act. IMF	REA/100 lbs	SEN	\$M	\$W	\$F	\$G	\$B	
2.86	3.53	1.10	5	68	40	61	48	109	
Dam's Production WR: 5 @ 101 YR: 2 @ 106									





SINCLAIR MT TIME K595

REG: 20565385 | DOB: 02/22/22 | TATTOO: K595

N Bar Prime Time D806#
Sinclair MT Time 2P77 14311980
N Bar Enchantress 4906

Gardens Prime Time#
N Bar Miss Emulous A404
Emulation N Bar 5522#
Coffey Enchantress 424
Horse Butte 6141 of 3141
Jad Ester 3750
Sinclair Emulation TNT 27F3
N Bar Kinochtry Bty V1495H

Loyning Equinox 7
Sinclair K Bty 0EQ1 7FE4 20563428
Sinclair K Bty 7FE4 E010#

Individual Performance					EPD's				
BW	ADJ. WW	WR	ADJ. YW	YR	CED	BW	WW	MILK	YW
74	643	119	1133	111	7	-1.3	48	26	78
Individual Performance					\$ Values				
ADG	Act. IMF	REA/100 lbs	Mat	SEN	\$M	\$W	\$F	\$G	\$B
3.49	3.22	1.15	-2	56	51	56	25	81	

Dam's Production WR: 1 @ 119 YR: 1 @ 111



SINCLAIR MT TIME 2P77, THE HIGHLY MATERNAL AND CALVING EASE SIRE OF LOT 71



SINCLAIR EXECUTIVE K66

REG: *20419909 | DOB: 02/18/22 | TATTOO: K66

Sinclair Black Iron 7UR26
Sinclair Executive 9UF3 19472545
Sinclair Lady Ida 8XV12 C52#

Sinclair Exactly 4U2
Sinclair Erica 2FE2 8BT12
N Bar Emulation Ext V722
N Bar Lady Ida Z1453
Sinclair Timeless 8BA4#
Sinclair Primrose 1G13 6E11#
R R Rito 707#
Sinclair Lady 0353 4465

Sinclair Sun Dial 5TL43
Sinclair Lady 7TG11 0R109 18982449
Sinclair Lady 0R109 0353

Individual Performance					EPD's				
BW	ADJ. WW	WR	ADJ. YW	YR	CED	BW	WW	MILK	YW
78	567	94	1018	99	6	-1.9	36	19	60
Individual Performance					\$ Values				
ADG	Act. IMF	REA/100 lbs	Mat	SEN	\$M	\$W	\$F	\$G	\$B
3.00	3.05	1.15	16	53	36	49	22	71	

Dam's Production WR: 3 @ 95 YR: 1 @ 99



SINCLAIR EXECUTIVE 9UF3, THE FEMALE MAKER AND SIRE OF LOT 73.



SINCLAIR K BTY 7FE4 E010, THE GRANDAM OF LOT 71.



SINCLAIR POWDER RIVER K34

REG: *20555599 | DOB: 02/13/22 | TATTOO: K34

Sinclair Piney Creek 6FV16
Sinclair Powder River 0FL7 19934800
Sinclair Eriskay 5E3 2N11#

Sinclair X-Changer 2FE9
Sinclair K Bty 2X7 6MB8#
N Bar Explosion#
Sinclair Eriskay 2N11 7883
Sinclair Extra 4X13#
Sinclair Blkbird 7OC10 J472
Sinclair Grass Master#
Sinclair Blkcap 8BT3 A29

Sinclair Emperor 0XT51
Sinclair Blkcap 6X014 2G54 18486481
Sinclair Blkcap 2G54 8BT3

Individual Performance					EPD's				
BW	ADJ. WW	WR	ADJ. YW	YR	CED	BW	WW	MILK	YW
77	618	102	1036	101	9	-1.0	36	30	64
Individual Performance					\$ Values				
ADG	Act. IMF	REA/100 lbs	Mat	SEN	\$M	\$W	\$F	\$G	\$B
2.69	3.20	.98	6	68	42	64	33	97	

Dam's Production WR: 4 @ 105 YR: 2 @ 104



SINCLAIR POWDER RIVER 0FL7, THE 2ND HIGH SELLING BULL OF 2021 SELLING TO SAM RISSE, SD AND THE SIRE OF LOT 74.



SINCLAIR EXECUTIVE K571

REG: 20546286 | DOB: 02/19/22 | TATTOO: K571

Sinclair Black Iron 7UR26
Sinclair Executive 9UF3 19472545
Sinclair Lady Ida 8XV12 C52#

Sinclair Exactly 4U2
Sinclair Erica 2FE2 8BT12
N Bar Emulation Ext V722
N Bar Lady Ida Z1453
Cole Creek Black Cedar 46P#
Cole Creek Clovanada 49S#
Sinclair Shadow Rider 9534
Sinclair Blkbird 9A9 6P58

Cole Creek Cedar Ridge 1V#
Sinclair Blkbird 6CR9 1SR13 18497907
Sinclair Blkbird 1SR13 9A9

Individual Performance					EPD's				
BW	ADJ. WW	WR	ADJ. YW	YR	CED	BW	WW	MILK	YW
96	538	99	1048	102	1	1.4	41	23	72
Individual Performance					\$ Values				
ADG	Act. IMF	REA/100 lbs	Mat	SEN	\$M	\$W	\$F	\$G	\$B
3.38	3.34	1.22	12	64	36	55	33	88	

Dam's Production WR: 4 @ 102 YR: 3 @ 103

75 SINCLAIR LONGMIRE K325
REG: *20400544 | DOB: 03/06/22 | TATTOO: K325

S A V Renown 3439#
Reisig Longmire 8326 19448009
BUF Eriskay 7417

Sinclair Emulation 5522 XP#
Sinclair Blkcap 5FE28 602 18370928
Sinclair Blkcap 602 A26

Rito 707 of Ideal 3407 7075
S A V Blackcap May 4136
N Bar Emulation EXT#
J Bar 7 Eriskay Q13-71K1#
Emulation N Bar 5522#
N Bar Primrose Y3051#
Sinclair Pioneer 1F3
Rito Majesty 4A26 of F0203

Individual Performance					EPD's				
BW	ADJ. WW	WR	ADJ. YW	YR	CED	BW	WW	MILK	YW
79	609	101	1078	105	10	-1.3	33	22	64
Individual Performance				Mat	\$ Values				
ADG	Act. IMF	REA/100 lbs	\$EN	\$M	\$W	\$F	\$G	\$B	
3.07	2.45	1.18	5	64	30	43	20	64	

Dam's Production WR: 6 @ 99 YR: 3 @ 98

78 SINCLAIR LONGMIRE K619
REG: *20548787 | DOB: 02/28/22 | TATTOO: K619

S A V Renown 3439#
Reisig Longmire 8326 19448009
BUF Eriskay 7417

Ideal 4458 of 6807 5103
Sinclair C Pride 8RJ6 1RL13 19166620
Sinclair C Pride 1RL13 J204

Rito 707 of Ideal 3407 7075
S A V Blackcap May 4136
N Bar Emulation EXT#
J Bar 7 Eriskay Q13-71K1#
D H D Traveler 6807#
Eldorado 5103 Ideal 3167 156
Sinclair Rito Legacy 3R9
N Bar Clova Pride WP C2009

Individual Performance					EPD's				
BW	ADJ. WW	WR	ADJ. YW	YR	CED	BW	WW	MILK	YW
80	590	98	1054	103	6	.0	35	22	72
Individual Performance				Mat	\$ Values				
ADG	Act. IMF	REA/100 lbs	\$EN	\$M	\$W	\$F	\$G	\$B	
3.08	3.27	1.26	-1	62	29	66	21	87	

Dam's Production WR: 3 @ 99 YR: 2 @ 106

76 SINCLAIR LONGMIRE K510
REG: 20546274 | DOB: 02/08/22 | TATTOO: K510

S A V Renown 3439#
Reisig Longmire 8326 19448009
BUF Eriskay 7417

Sinclair Pioneer 1RF1
Sinclair Ms Emulous 9RM1 19475203
Sinclair Ms Emulous 2P5 D47

Rito 707 of Ideal 3407 7075
S A V Blackcap May 4136
N Bar Emulation EXT#
J Bar 7 Eriskay Q13-71K1#
PBC 707 1M F0203#
N Bar Miss Emulous A404
N Bar Prime Time D806#
N Bar Miss Emulous B514

Individual Performance					EPD's				
BW	ADJ. WW	WR	ADJ. YW	YR	CED	BW	WW	MILK	YW
92	509	94	1063	104	5	.7	35	22	73
Individual Performance				Mat	\$ Values				
ADG	Act. IMF	REA/100 lbs	\$EN	\$M	\$W	\$F	\$G	\$B	
4.05	3.11	1.08	6	67	27	66	19	84	

Dam's Production WR: 1 @ 94 YR: 1 @ 104

79 SINCLAIR NIGHTHAWK K301
REG: *20400556 | DOB: 03/05/22 | TATTOO: K301

Ankonian Cornhusker#
N Bar Nighthawk 11403481
N Bar Enchantress 4908#

Sinclair Executive 9XV2
Sinclair Blkbird 5U41 9BA9 18154178
Sinclair Blkbird 9BA9 7036#

Ankonian Cornerstone
Ankony 8F78 Erica 341B6
Basin Emulation 5953
Coffey Enchantress 424
N Bar Emulation Ext V722
N Bar Primrose Y3051#
Sinclair IN Time 6BT39
Sinclair Blkbird 7036 5PV50

Individual Performance					EPD's				
BW	ADJ. WW	WR	ADJ. YW	YR	CED	BW	WW	MILK	YW
95	617	102	1030	100	-1	1.3	33	27	64
Individual Performance				Mat	\$ Values				
ADG	Act. IMF	REA/100 lbs	\$EN	\$M	\$W	\$F	\$G	\$B	
2.81	2.65	.91	2	36	31	61	26	87	

Dam's Production WR: 6 @ 94 YR: 3 @ 99

77 SINCLAIR LONGMIRE K028
REG: 20551894 | DOB: 02/24/22 | TATTOO: K028

S A V Renown 3439#
Reisig Longmire 8326 19448009
BUF Eriskay 7417

Sinclair Blackbird 5E2 2C9# 14969676
Sinclair Blackbird 2C9 9864

Rito 707 of Ideal 3407 7075
S A V Blackcap May 4136
N Bar Emulation EXT#
J Bar 7 Eriskay Q13-71K1#
N Bar Emulation EXT#
N Bar Kinochtry Beauty 4288
D H D Traveler 6807#
Papa Blackbird 9864#

Individual Performance					EPD's				
BW	ADJ. WW	WR	ADJ. YW	YR	CED	BW	WW	MILK	YW
ET	504	88	1040	99	3	.7	34	24	68
Individual Performance				Mat	\$ Values				
ADG	Act. IMF	REA/100 lbs	\$EN	\$M	\$W	\$F	\$G	\$B	
3.68	2.94	1.17	-1	48	30	67	26	92	

Dam's Production WR: 14 @ 110 YR: 13 @ 109

K028 carries a stacked maternal and range-adapted pedigree for generations. His dam definitely outperformed her contemporaries for the test of time.



SINCLAIR
BLACKBIRD 5E2
2C9, DAM OF
LOT 77



N BAR NIGHTHAWK, A FEATURED LONG-TIME N BAR RANCH HERDSIRE AND THE SIRE OF LOT 79.

80 SINCLAIR NIGHTHAWK K341
REG: *20400532 | DOB: 03/10/22 | TATTOO: K341

Ankonian Cornhusker#
N Bar Nighthawk 11403481
N Bar Enchantress 4908#

N Bar Emulation EXT#
Sinclair K Bty 3X20 J115 17578290
N Bar Kinochtry Beauty G3259

Ankonian Cornerstone
Ankony 8F78 Erica 341B6
Basin Emulation 5953
Coffey Enchantress 424
Emulation N Bar 5522#
N Bar Primrose 2424
N Bar Prime Rate#
N Bar Kinochtry Beauty Y3567

Individual Performance					EPD's				
BW	ADJ. WW	WR	ADJ. YW	YR	CED	BW	WW	MILK	YW
90	634	105	1036	101	-2	1.3	36	27	67
Individual Performance				Mat	\$ Values				
ADG	Act. IMF	REA/100 lbs	\$EN	\$M	\$W	\$F	\$G	\$B	
2.60	3.13	.95	2	38	35	69	23	92	

Dam's Production WR: 7 @ 94 YR: 4 @ 101



SINCLAIR EMULATION K97

REG: *20419898 | DOB: 02/26/22 | TATTOO: K97

N Bar Emulation EXT#
Sinclair Exquisite 0X3 19941920
Basin Pamella F271

Emulation N Bar 5522#
N Bar Primrose 2424
Basin Rainmaker 654X#
Basin Pamella 676X#
Sinclair Entrepreneur 8R101
Sinclair Lady Ida 8XV12 C52#
Basin Rainmaker 914A
Sinclair Lady Ida OXM13

Sinclair Broker 3RC33
Sinclair Lady Ida 6K27 3007 18487770
Sinclair Lady Ida 3007 OXM13

Individual Performance					EPD's				
BW	ADJ. WW	WR	ADJ. YW	YR	CE	BW	WW	MILK	YW
90	634	105	1034	101	-1	1.9	41	29	72
Individual Performance				Mat	\$ Values				
ADG	Act. IMF	REA/100 lbs	SEN	\$M	\$W	\$F	\$G	\$B	
2.95	3.55	1.08	0	63	40	68	35	103	
Dam's Production WR: 4 @ 104 YR: 4 @ 99									



SINCLAIR EMULATION K296

REG: *20400584 | DOB: 03/04/22 | TATTOO: K296

N Bar Emulation EXT#
Sinclair Exquisite 0X3 19941920
Basin Pamella F271

Emulation N Bar 5522#
N Bar Primrose 2424
Basin Rainmaker 654X#
Basin Pamella 676X#
Wandering CRK Dynasty JRM 2F#
Sinclair Eriskay 2N1 7883#
Sinclair Original 8R104
Sinclair Primrose 9X64 B1#

Sinclair Dynasty 3WCD7
Sinclair Primrose 7WC31 3RO6 18826254
Sinclair Primrose 3RO6 9X64

Individual Performance					EPD's				
BW	ADJ. WW	WR	ADJ. YW	YR	CE	BW	WW	MILK	YW
83	594	99	1015	99	1	2.0	38	26	68
Individual Performance				Mat	\$ Values				
ADG	Act. IMF	REA/100 lbs	SEN	\$M	\$W	\$F	\$G	\$B	
2.71	2.84	1.16	3	65	35	62	21	83	
Dam's Production WR: 4 @ 99 YR: 2 @ 102									

To better serve our customers, we are making every effort to provide our customer's cattle with better sale marketing exposure.

Let one of the Sinclair Team Representatives know when you are ready to market your cattle and we will try our best to assist you in achieving the top dollar possible to add value to your bottom line.

Fred Saunders is an experienced livestock marketing professional that strives to help earn top dollar for your cattle. He is a friend of the Sinclair program and has been through the offering. Please call him if he can help you successfully market your cattle.



Your personal representative for Northern Livestock Video Auction



Heart S Livestock Marketing, LLC

Contact Me for all your Marketing Needs!

Fred Saunders

4149 Elk Creek Rd - PO Box 117
Grass Range, MT 59032

406-788-9331 | fredsanders9@gmail.com

Enhancing your marketing options the personal and professional way.

Licensed and Bonded



REF SIRE SINCLAIR EXQUISITE 0X3

REG: 19941920 | DOB: 02/02/20 | TATTOO: 0X3

Emulation N Bar 5522#
N Bar Emulation EXT 10776479#
 N Bar Primrose 2424

Basin Rainmaker 654X#
Basin Pamella F271 12932233
 Basin Pamella 676X#

Emulation 31#
 Ankony 8F78 Lass 8F275
 Emulation 31#
 Primrose N Bar 9962
 Basin Rainmaker D S 380U#
 Basin Bardolene 423U
 Basin Rainmaker D S 450U
 Basin Pamella 6806

CED	BW	WW	YW	SC	MILK	DOC	MARB	REA	\$M	\$W	\$F	\$B	\$C
-4	3.4	46	86		30				47	40	78	103	181

0X3 was retained by Sinclair as a featured herdsire that adds tremendous length and performance and some extra size for those selling calves by the pound. His impeccable maternal pedigree is rock solid. His first progeny record ratios at CE 1.0 BW 105 WW 102 YW 105. His first calf crop have exceeded our expectations.



83 SINCLAIR EMULATION K157

REG: *20419913 | DOB: 03/07/22 | TATTOO: K157

N Bar Emulation EXT#
Sinclair Exquisite 0X3 19941920
 Basin Pamella F271

Sinclair X-Changer 5FE15
Sinclair Lady Ida 8EE8 6K15 19275389
 Sinclair Lady Ida 6K15 3001

Emulation N Bar 5522#
 N Bar Primrose 2424
 Basin Rainmaker 654X#
 Basin Pamella 676X#
 Sinclair Emulation 5522 XP#
 Sinclair M Emulous 4ET1 D47#
 Sinclair Broker 3RC33
 Sinclair Lady Ida 3001 0XH4#

Individual Performance					EPD's				
BW	ADJ. WW	WR	ADJ. YW	YR	CED	BW	WW	MILK	YW
88	610	101	1018	99	0	1.6	41	26	71

Individual Performance				Mat	\$ Values				
ADG	Act. IMF	REA/100 lbs	SEN	\$EN	\$M	\$W	\$F	\$G	\$B
2.68	3.40	1.16	5	67	39	59	23	83	

Dam's Production WR: 2 @ 97 YR: 1 @ 99

85 SINCLAIR EXQUISITE K626

REG: *20561687 | DOB: 03/03/22 | TATTOO: K626

N Bar Emulation EXT#
Sinclair Exquisite 0X3 19941920
 Basin Pamella F271

Sinclair Piney Creek 5FV5
Sinclair Lady 9FF41 7OE5 19541313
 Sinclair Lady 7OE5 0C4

Emulation N Bar 5522#
 N Bar Primrose 2424
 Basin Rainmaker 654X#
 Basin Pamella 676X#
 Sinclair X-Changer 2FE9
 Sinclair Ms Emulous 8F12
 O C C Emblazon 854E#
 Sinclair Lady 0C4 4465

Individual Performance					EPD's				
BW	ADJ. WW	WR	ADJ. YW	YR	CED	BW	WW	MILK	YW
80	624	103	1021	99	4	.2	40	26	65

Individual Performance				Mat	\$ Values				
ADG	Act. IMF	REA/100 lbs	SEN	\$EN	\$M	\$W	\$F	\$G	\$B
2.42	3.69	1.08	9	75	42	54	24	78	

Dam's Production WR: 1 @ 103 YR: 1 @ 99

84 SINCLAIR EXQUISITE K508

REG: 20546273 | DOB: 02/08/22 | TATTOO: K508

N Bar Emulation EXT#
Sinclair Exquisite 0X3 19941920
 Basin Pamella F271

Rito Excel 809#
Sinclair Eriskay 9Z1 011 19622725
 PLD Eriskay Papa 011

Emulation N Bar 5522#
 N Bar Primrose 2424
 Basin Rainmaker 654X#
 Basin Pamella 676X#
 PBC 707 1M E0046
 PBC 707 1F E0060
 Papa Rito T Intense DHD 6844#
 Papa Eriskay 7862#

Individual Performance					EPD's				
BW	ADJ. WW	WR	ADJ. YW	YR	CED	BW	WW	MILK	YW
98	529	98	988	97	-4	4.1	40	22	70

Individual Performance				Mat	\$ Values				
ADG	Act. IMF	REA/100 lbs	SEN	\$EN	\$M	\$W	\$F	\$G	\$B
3.40	3.53	1.18	7	42	26	60	24	84	

Dam's Production WR: 2 @ 103 YR: 2 @ 101

An extremely intriguing pedigree in a bull out of the famous PAPA Eriskay cow family. Only at Sinclair are you going to find these stacked pedigrees of extremely proven legendary Angus sires.



RITO EXCEL 809, THE LEGENDARY MATERNAL GRANDSIRE OF LOT 84.

86 SINCLAIR EXQUISITE K539

REG: 20546280 | DOB: 02/14/22 | TATTOO: K539

N Bar Emulation EXT#
Sinclair Exquisite 9X93 20254570
 N Bar Primrose Y3051#

N Bar Nitro
Sinclair Primrose 9NI11 19602952
 Sinclair Primrose 7TA3 2D9

Emulation N Bar 5522#
 N Bar Primrose 2424
 N Bar Emulation EXT#
 N Bar Primrose 2429#
 N Bar Emulation EXT#
 N Bar Kinochtry Beauty 4288
 Sinclair Preview 2TL6
 Sinclair Primrose 2D9 8PV95

Individual Performance					EPD's				
BW	ADJ. WW	WR	ADJ. YW	YR	CED	BW	WW	MILK	YW
78	584	108	1019	100	7	-1.1	42	23	70

Individual Performance				Mat	\$ Values				
ADG	Act. IMF	REA/100 lbs	SEN	\$EN	\$M	\$W	\$F	\$G	\$B
3.04	2.73	1.09	4	69	42	57	19	76	

Dam's Production WR: 1 @ 108 YR: 1 @ 100





REF SIRE SINCLAIR TIMELESS 8BA4#
 REG: 16027579 | DOB: 8BA4 | TATTOO: 8BA4

BT Right Time 24J#
Sinclair IN Time 6BT39 15366581
 N Bar Miss Emulous A404

Leachman Right Time#
 Sitz Everelda Entense 1905
 N Bar Emulation Ext Z52
 N Bar Miss Emulous X3091#

N Bar Prime Time D806#
Sinclair Blackbird 2P8 7079# 14339897
 Rito 707 of Ideal 089 7076

Gardens Prime Time#
 N Bar Miss Emulous A404#
 R R Rito 707#
 Ideal 089 of 8103 7394

CED	BW	WW	YW	SC	MILK	DOC	MARB	REA	\$M	\$W	\$F	\$B	\$C
14	-4.7	21	53		34				38	32	67	94	160

Timeless is a rock solid, "go to" highly proven heifer bull who is a universal breeding tool. He makes exceptional females that work for a living in range environments. This pathfinder sire's progeny ratios are BW-96 WW -98 YW -101 And has 134 daughters avg nursing ratio at a 102.



87

BIG TIME CALVING EASE HERDSIRE PROSPECT!

87 SINCLAIR TIMELESS K83
 REG: *20419924 | DOB: 02/24/22 | TATTOO: K83

Sinclair IN Time 6BT39
Sinclair Timeless 8BA4 16027579#
 Sinclair Blackbird 2P8 7079#

Sinclair Plains Boss 5B02
Sinclair Blacky 8L23 4A3 19169684
 Sinclair Blacky 4A3 20C4

BT Right Time 24J#
 N Bar Miss Emulous A404
 N Bar Prime Time D806#
 Rito 707 of Ideal 089 7076

Sinclair Patriarch 3B47
 Sinclair Lady Ida 7V19 04F3
 Sinclair Shadow Rider 9S34
 Sinclair Blacky 20C4 0BA32

Individual Performance					EPD's				
BW	ADJ. WW	WR	ADJ. YW	YR	CED	BW	WW	MILK	YW
62	593	98	1014	99	15	-5.3	32	26	61

Individual Performance				Mat	\$ Values			
ADG	Act. IMF	REA/100 lbs	SEN	\$M	\$W	\$F	\$G	\$B
2.86	2.96	1.04	10	67	36	56	21	77

Dam's Production WR: 3 @ 97 YR: 1 @ 99

K83 is an extreme calving-ease specialist with an outstanding phenotype! If you desire "bet the ranch calving ease" with a proven female maker pedigree backed by an excellent dam that covers all the maternal bases, this is a very top choice!

88 SINCLAIR TIMELESS K344
 REG: *20400587 | DOB: 03/10/22 | TATTOO: K344

Sinclair IN Time 6BT39
Sinclair Timeless 8BA4 16027579#
 Sinclair Blackbird 2P8 7079#

Sinclair Exquisite 6X2
Sinclair C Pride 8XA16 5FE13 19284027
 Sinclair C Pride 5FE13 2P10

BT Right Time 24J#
 N Bar Miss Emulous A404
 N Bar Prime Time D806#
 Rito 707 of Ideal 089 7076

N Bar Emulation EXT#
 Sinclair Ms Emulous 7RT5
 Sinclair Emulation 5522 XP#
 Sinclair C Pride 2P10 J355

Individual Performance					EPD's				
BW	ADJ. WW	WR	ADJ. YW	YR	CED	BW	WW	MILK	YW
81	661	110	1055	103	10	-2.1	32	29	56

Individual Performance				Mat	\$ Values			
ADG	Act. IMF	REA/100 lbs	SEN	\$M	\$W	\$F	\$G	\$B
2.59	3.21	1.13	9	64	39	51	22	73

Dam's Production WR: 2 @ 104 YR: 1 @ 103





SINCLAIR TIMELESS K44

REG: *20434690 | DOB: 02/14/22 | TATTOO: K44

Sinclair IN Time 6BT39
Sinclair Timeless 8BA4 16027579#
Sinclair Blackbird 2P8 7079#

Sinclair X-Plus 8XX3
Sinclair Blacky OXC28 5TL18 20006138
Sinclair Blacky 5TL18 3G18#

BT Right Time 24J#
N Bar Miss Emulous A404
N Bar Prime Time D806#
Rito 707 of Ideal 089 7076
Sinclair Emulation XXP#
Sinclair Enchantress 5RT1#
Sinclair Timeless 8BA4#
Sinclair Blacky 3G18 6P18

Individual Performance					EPD's				
BW	ADJ. WW	WR	ADJ. YW	YR	CED	BW	WW	MILK	YW
79	593	98	1022	99	6	.0	35	28	72
Individual Performance				Mat	\$ Values				
ADG	Act. IMF	REA/100 lbs	SEN	\$M	\$W	\$F	\$G	\$B	
2.91	2.46	1.06	0	42	34	64	19	83	
Dam's Production WR: 1 @ 98 YR: 1 @ 99									



SINCLAIR JUSTIFIED K550

REG: 20553697 | DOB: 02/18/22 | TATTOO: K550

Connealy Judgment
KG Justified 3023 17707279#
KG Miss Magic 1443

N Bar Emulation EXT#
Sinclair Eriskay 3X31 2C11 17578697
Sinclair Eriskay 2C11 7883

Connealy Consensus 7229#
Etrine of Conanga 9876#
Sitz Wisdom 481T#
KG Miss Magic 3528
Emulation N Bar 5522#
N Bar Primrose 2424
D H D Traveler 6807#
Papa Eriskay 7883

Individual Performance					EPD's				
BW	ADJ. WW	WR	ADJ. YW	YR	CED	BW	WW	MILK	YW
80	508	94	967	95	9	-8	44	24	77
Individual Performance				Mat	\$ Values				
ADG	Act. IMF	REA/100 lbs	SEN	\$M	\$W	\$F	\$G	\$B	
3.26	3.15	1.05	4	70	43	64	40	104	
Dam's Production WR: 2 @ 97 YR: 2 @ 98									



SINCLAIR TIMELESS K591

REG: 20546296 | DOB: 02/22/22 | TATTOO: K591

Sinclair IN Time 6BT39
Sinclair Timeless 8BA4 16027579#
Sinclair Blackbird 2P8 7079#

Sinclair Emulous 8TD1
Sinclair Ms Wix OTD4 8RJ5 20045453
Sinclair Ms Wix 8RJ5 3S1

BT Right Time 24J#
N Bar Miss Emulous A404
N Bar Prime Time D806#
Rito 707 of Ideal 089 7076
Vance Top Dawg#
N Bar Miss Emulous A404
Ideal 4458 of 6807 5103
Sinclair Ms Wix 3S1 2022

Individual Performance					EPD's				
BW	ADJ. WW	WR	ADJ. YW	YR	CED	BW	WW	MILK	YW
70	519	96	964	94	11	-2.8	21	28	46
Individual Performance				Mat	\$ Values				
ADG	Act. IMF	REA/100 lbs	SEN	\$M	\$W	\$F	\$G	\$B	
3.13	2.98	1.07	10	58	26	53	21	74	
Dam's Production WR: 1 @ 96 YR: 1 @ 94									



SINCLAIR ERISKAY 3X31 2C11, THE MAJESTIC DAM OF LOT 93



SINCLAIR TIMELESS K304

REG: *20400555 | DOB: 03/05/22 | TATTOO: K304

Sinclair IN Time 6BT39
Sinclair Timeless 8BA4 16027579#
Sinclair Blackbird 2P8 7079#

Sinclair Executive 9XV2
Sinclair Primrose 5U4 3D10 18154144
Sinclair Primrose 3D10 655

BT Right Time 24J#
N Bar Miss Emulous A404
N Bar Prime Time D806#
Rito 707 of Ideal 089 7076
N Bar Emulation Ext V722
N Bar Primrose Y3051#
Sinclair Fortunate Son#
Sinclair Primrose 655 4P31

Individual Performance					EPD's				
BW	ADJ. WW	WR	ADJ. YW	YR	CED	BW	WW	MILK	YW
80	585	97	988	96	11	-2.7	29	28	57
Individual Performance				Mat	\$ Values				
ADG	Act. IMF	REA/100 lbs	SEN	\$M	\$W	\$F	\$G	\$B	
2.65	3.03	1.06	9	62	34	59	22	81	
Dam's Production WR: 6 @ 103 YR: 4 @ 102									



SINCLAIR JUSTIFIED K30

REG: *20434672 | DOB: 02/12/22 | TATTOO: K30

Connealy Judgment
KG Justified 3023 17707279#
KG Miss Magic 1443

Sinclair Emperor 6X02
Sinclair Nalie 00V20 6SX28 19981750
Sinclair Nalie 6SX28 1FE19

Connealy Consensus 7229#
Etrine of Conanga 9876#
Sitz Wisdom 481T#
KG Miss Magic 3528
Sinclair Emperor 0XT51
Sinclair Ms Emulous 2V20 A40
Sinclair Vision 3SX12
Sinclair Nalie 1FE19 8P6

Individual Performance					EPD's				
BW	ADJ. WW	WR	ADJ. YW	YR	CED	BW	WW	MILK	YW
81	620	103	1023	100	8	-3	49	25	86
Individual Performance				Mat	\$ Values				
ADG	Act. IMF	REA/100 lbs	SEN	\$M	\$W	\$F	\$G	\$B	
2.86	3.19	1.02	4	88	47	65	41	106	
Dam's Production WR: 1 @ 103 YR: 1 @ 100									



SINCLAIR JUSTIFIED K14

REG: *20434689 | DOB: 02/10/22 | TATTOO: K14

Connealy Judgment
KG Justified 3023 17707279#
KG Miss Magic 1443

Sinclair Dynasty 7WC17
Sinclair K Bty OWG15 6RE10 19981742
Sinclair K Bty 6RE10 OXM2

Connealy Consensus 7229#
Etrine of Conanga 9876#
Sitz Wisdom 481T#
KG Miss Magic 3528
Sinclair Dynasty 3WCD7
Sinclair Primrose 1G13 6E11#
Sinclair Promise 4RP15
Sinclair K Bty OXM2 3J3

Individual Performance					EPD's				
BW	ADJ. WW	WR	ADJ. YW	YR	CED	BW	WW	MILK	YW
67	720	119	995	97	9	-3.1	49	31	72
Individual Performance				Mat	\$ Values				
ADG	Act. IMF	REA/100 lbs	SEN	\$M	\$W	\$F	\$G	\$B	
1.85	3.33	1.04	7	97	61	52	41	94	
Dam's Production WR: 1 @ 119 YR: 1 @ 97									



SINCLAIR JUSTIFIED K40

REG: *20434677 | DOB: 02/13/22 | TATTOO: K40

Connealy Judgment
KG Justified 3023 17707279#
KG Miss Magic 1443

Sinclair Shadow Rider 6S8
Sinclair Primrose 0SH7 1G5 19981336
Sinclair Primrose 1G5 8P3

Connealy Consensus 7229#
Etrine of Conanga 9876#
Sitz Wisdom 481T#
KG Miss Magic 3528
N Bar Shadow X4124
N Bar Clova Pride E2188
Sinclair Grass Master#
Sinclair Primrose 8P3 E002

Individual Performance					EPD's				
BW	ADJ. WW	WR	ADJ. YW	YR	CED	BW	WW	MILK	YW
69	601	100	1028	100	9	-1.0	48	26	81
Individual Performance				Mat	\$ Values				
ADG	Act. IMF	REA/100 lbs	SEN	\$M	\$W	\$F	\$G	\$B	
2.86	4.13	1.06	4	90	49	61	44	106	
Dam's Production WR: 1 @ 100 YR: 1 @ 100									

96 SINCLAIR JUSTIFIED K32
REG: *20434674 | DOB: 02/12/22 | TATTOO: K32

Connealy Judgment
KG Justified 3023 17707279#
KG Miss Magic 1443

Connealy Consensus 7229#
Entrine of Conanga 9876#
Sitz Wisdom 481T#
KG Miss Magic 3528
PBC 707 1M F0203#
N Bar Miss Emulous A404
N Bar Emulation EXT#
Sinclair K Bty 9P31 V149#

Sinclair Pioneer 1RF1
Sinclair K Bty ORM7 8X2 19981784
Sinclair K Bty 8X2 9P31

Individual Performance					EPD's				
BW	ADJ. WW	WR	ADJ. YW	YR	CED	BW	WW	MILK	YW
72	604	100	1014	99	8	-2.0	44	26	77
Individual Performance				Mat	\$ Values				
ADG	Act. IMF	REA/100 lbs	SEN	\$M	\$W	\$F	\$G	\$B	
2.86	4.07	1.03	9	92	46	61	44	106	

Dam's Production WR: 1 @ 100 YR: 1 @ 99

97 SINCLAIR JUSTIFIED K166
REG: *20423323 | DOB: 03/08/22 | TATTOO: K166

Connealy Judgment
KG Justified 3023 17707279#
KG Miss Magic 1443

Connealy Consensus 7229#
Entrine of Conanga 9876#
Sitz Wisdom 481T#
KG Miss Magic 3528
Sinclair Broker 3RC33
Sinclair Ms Emulous 1FE23
Sinclair IN Time 6BT39
Sinclair K Bty 5P65 2S24

Sinclair Rollin Coal 5K2
Sinclair K Bty 8KF22 1BA24 19281339
Sinclair K Bty 1BA24 5P65#

Individual Performance					EPD's				
BW	ADJ. WW	WR	ADJ. YW	YR	CED	BW	WW	MILK	YW
88	584	97	995	97	9	-1.5	41	26	72
Individual Performance				Mat	\$ Values				
ADG	Act. IMF	REA/100 lbs	SEN	\$M	\$W	\$F	\$G	\$B	
2.80	3.25	1.22	10	89	43	59	43	103	

Dam's Production WR: 3 @ 99 YR: 1 @ 97

98 SINCLAIR DYNASTY K197
REG: *20548762 | DOB: 03/19/22 | TATTOO: K197

Sinclair Dynasty 3WCD7
Sinclair Dynasty 7WC17 18826235
Sinclair Primrose 1G13 6E11#

Wandering CRK Dynasty JRM 2F#
Sinclair Eriskay 2N1 7883#
Sinclair Grass Master#
Sinclair Primrose 6E11 Z194
Rito Revolve OR5
Sinclair K BTY 6PV5 25F3
Sinclair Emperor OXT1
Sinclair Primrose ORS12 6X40

Sinclair Rito 9R7
Sinclair Primrose 6RV5 3IJ3 18526809
Sinclair Primrose 3IJ3 ORS12#

Individual Performance					EPD's				
BW	ADJ. WW	WR	ADJ. YW	YR	CED	BW	WW	MILK	YW
88	629	104	1098	113	7	.6	52	22	92
Individual Performance				Mat	\$ Values				
ADG	Act. IMF	REA/100 lbs	SEN	\$M	\$W	\$F	\$G	\$B	
3.14	2.64	.97	-10	56	45	69	21	89	

Dam's Production WR: 5 @ 100 YR: 3 @ 105



SINCLAIR RITO 9R7, THE MATERNAL GRANDSIRE OF LOT 98.

99 SINCLAIR EMULATION K324
REG: *20400554 | DOB: 03/06/22 | TATTOO: K324

N Bar Emulation EXT#
Sinclair Exquisite 9X6 19477703
Sinclair K Bty 9P31 V149#

Emulation N Bar 5522#
N Bar Primrose 2424
N Bar Prime Time D806#
N Bar Kinochtry Beauty 4317#
Sinclair IN Time 6BT39
Sinclair Blackbird 2P8 7079#
N Bar Emulation EXT#
N Bar Kinochtry Bty SCC 2V3#

Sinclair Timeless 8BA4#
Sinclair K Bty 3TL9 2X39 18154060
Sinclair K Bty 2X39 2V3

Individual Performance					EPD's				
BW	ADJ. WW	WR	ADJ. YW	YR	CED	BW	WW	MILK	YW
82	615	102	1017	99	8	-1.2	37	32	67
Individual Performance				Mat	\$ Values				
ADG	Act. IMF	REA/100 lbs	SEN	\$M	\$W	\$F	\$G	\$B	
3.03	3.36	1.00	5	71	44	67	26	92	

Dam's Production WR: 5 @ 105 YR: 3 @ 103



SINCLAIR EXQUISITE 9X6, A FEATURED SON OF THE K BTY 9P31 DONOR, WHOSE FIRST DAUGHTERS ARE MAKING WONDERFUL COWS IN THE SINCLAIR PROGRAM, AND THE SIRE OF LOT 99.





REF SIRE **SINCLAIR EMULATION 8FT8**
 REG: 19168723 | DOB: 02/02/18 | TATTOO: 8FT8

Sinclair Emulation 0F4
Sinclair Emulation 4FX1 17925421
 Sinclair M Emulous 4ET1 D47#

Sinclair Line-XX 2H1
Sinclair Enchantress 6HX26 18795483
 Sinclair Enchantress WP 4OE3

Emulation N Bar 5522#
 N Bar Kinochtry Bty SCC 2V3#
 N Bar Explosion TNT#
 N Bar Miss Emulous B514
 Sinclair Line X 8XV6
 Sinclair Primrose 9IT13 5R47
 O C C Emblazon 854E#
 N Bar Enchantress WP F3619

CED	BW	WW	YW	SC	MILK	DOC	MARB	REA	\$M	\$W	\$F	\$B	\$C
8	0.1	39	66	-.28	29	-9	.22	.02	64	43	42	62	144

8FT8 is an impressive grass based, low-input type sire that is an extremely thick bodied bull that's calving ease and added milking ability while still being a positive \$EN. His dam and grandam are hard working, moderate framed cows that descend from the famous foundation Enchantress J380 cow. 8FT8 really stamps his calves with his type and kind.



100 **SINCLAIR EMULATION K363**
 REG: *20559911 | DOB: 03/22/22 | TATTOO: K363

Sinclair Emulation 4FX1
Sinclair Emulation 8FT8 19168723
 Sinclair Enchantress 6HX26

Sinclair Emperor OXT1
Sinclair Primrose 3IJ1 8P3 17483217
 Sinclair Primrose 8P3 E002

Sinclair Emulation 0F4
 Sinclair M Emulous 4ET1 D47#
 Sinclair Line-XX 2H1
 Sinclair Enchantress WP 4OE3

Sinclair Extra 4X13#
 Sinclair Ruth 8A1 A78
 N Bar Prime Time D806#
 N Bar Primrose 1985B

Individual Performance					EPD's				
BW	ADJ. WW	WR	ADJ. YW	YR	CED	BW	WW	MILK	YW
81	632	105	1096	113	12	-1.6	36	26	65
Individual Performance				Mat	\$ Values				
ADG	Act. IMF	REA/100 lbs	\$EN	\$M	\$W	\$F	\$G	\$B	
3.11	3.05	1.14	8	69	39	53	29	82	
Dam's Production WR: 8 @ 99					YR: 7 @ 99				



SINCLAIR EMULATION 8FT8 SIRE TO LOT 100 AND 101.

101 **SINCLAIR EMULATION K361**
 REG: *20548766 | DOB: 03/21/22 | TATTOO: K361

Sinclair Emulation 4FX1
Sinclair Emulation 8FT8 19168723
 Sinclair Enchantress 6HX26

Sinclair Shadow Rider 9S34
Sinclair Blacky 4A3 2OC4 17803223
 Sinclair Blacky 2OC4 OBA32

Sinclair Emulation 0F4
 Sinclair M Emulous 4ET1 D47#
 Sinclair Line-XX 2H1
 Sinclair Enchantress WP 4OE3

N Bar Shadow X4124
 N Bar Primrose Y3051#
 O C C Great Plains 943G#
 Sinclair Blacky OBA32 6P18

Individual Performance					EPD's				
BW	ADJ. WW	WR	ADJ. YW	YR	CED	BW	WW	MILK	YW
75	636	105	1014	104	11	-1.9	42	24	67
Individual Performance				Mat	\$ Values				
ADG	Act. IMF	REA/100 lbs	\$EN	\$M	\$W	\$F	\$G	\$B	
2.53	3.48	1.09	10	86	45	48	25	73	
Dam's Production WR: 7 @ 97					YR: 4 @ 97				



102 SINCLAIR PROMISE K362
 REG: *20548767 | DOB: 03/22/22 | TATTOO: K362

Sinclair Promise 6RE2
Sinclair Promise 8PR8 19284016
 Sinclair K Bty 4FX25 8R31

Sinclair Promise 4RP15
 Sinclair Primrose 1V2 145K
 Sinclair Emulation 0F4
 Sinclair K Bty 8R31 04M3
 Sinclair Emulation 5522 XP#
 Sinclair Blackie 7V3 2P18
 N Bar Explosion#
 Sinclair Blackcap 2N10 7856

Sinclair X-Changer 2FE9
Sinclair Blkcap 6FV12 5E5 18486490
 Sinclair Blackcap 5E5 2N10

Individual Performance					EPD's				
BW	ADJ. WW	WR	ADJ. YW	YR	CED	BW	WW	MILK	YW
89	666	110	1064	109	-1	2.9	53	26	89
Individual Performance				Mat	\$ Values				
ADG	Act. IMF	REA/100 lbs		\$EN	\$M	\$W	\$F	\$G	\$B
2.67	4.02	.98		-6	63	46	65	37	102

Dam's Production WR: 4 @ 104 YR: 4 @ 104

103 SINCLAIR BLACK IRON K130
 REG: *20548761 | DOB: 03/03/22 | TATTOO: K130

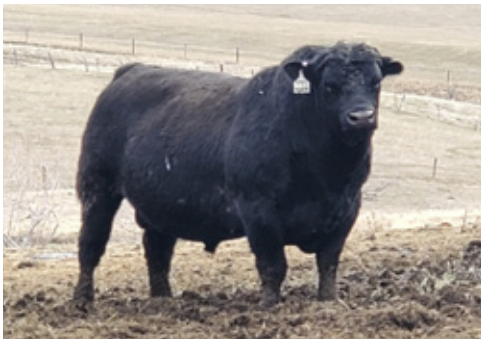
Sinclair Exactly 4U2
Sinclair Black Iron 7UR26 19016137
 Sinclair Erica 2FE2 8BT12

Sinclair Executive 9XV2
 Sinclair Lady 0R109 03S3
 Sinclair Emulation 5522 XP#
 Sinclair Erica 8BT12 A18
 Traveler 1148 G D A R#
 N Bar Clova Pride 2264
 Emulation 31#
 Sinclair Enchantress 7P14

Gardens Transition 7205 S1
Sinclair Enchantress 7GT4 18829781
 Sinclair Enchantress 9A37

Individual Performance					EPD's				
BW	ADJ. WW	WR	ADJ. YW	YR	CED	BW	WW	MILK	YW
90	597	99	1109	108	-1	3.1	49	15	83
Individual Performance				Mat	\$ Values				
ADG	Act. IMF	REA/100 lbs		\$EN	\$M	\$W	\$F	\$G	\$B
3.18	3.11	1.00		5	47	32	62	30	92

Dam's Production WR: 4 @ 97 YR: 2 @ 104



SINCLAIR BLACK IRON 7UR26, THE POWER AND MATERNAL SIRE OF LOTS 103 AND 105.

104 SINCLAIR BLACK IRON K122
 REG: *20419904 | DOB: 03/02/22 | TATTOO: K122

Sinclair Executive 9XV2
Sinclair Exactly 4U2 17798945
 Sinclair Lady 0R109 03S3

N Bar Emulation Ext V722
 N Bar Primrose Y3051#
 R R Rito 707#
 Sinclair Lady 03S3 4465
 Sinclair Emulation 0F4
 Sinclair M Emulous 4ET1 D47#
 Sinclair Timeless 8BA4#
 Sinclair Primrose 3I1 8P3

Sinclair Emulation 4FX1
Sinclair Primrose 7FT13 18805030
 Sinclair Primrose 5TL37 3I1

Individual Performance					EPD's				
BW	ADJ. WW	WR	ADJ. YW	YR	CED	BW	WW	MILK	YW
78	574	95	1001	97	8	-1.9	38	19	64
Individual Performance				Mat	\$ Values				
ADG	Act. IMF	REA/100 lbs		\$EN	\$M	\$W	\$F	\$G	\$B
2.97	2.88	1.10		14	69	35	52	14	66

Dam's Production WR: 4 @ 103 YR: 3 @ 98



SINCLAIR EXACTLY 4U2, THE SIRE OF LOTS 104 AND 107.

105 SINCLAIR BLACK IRON K221
 REG: *20548764 | DOB: 04/01/22 | TATTOO: K221

Sinclair Exactly 4U2
Sinclair Black Iron 7UR26 19016137
 Sinclair Erica 2FE2 8BT12

Sinclair Executive 9XV2
 Sinclair Lady 0R109 03S3
 Sinclair Emulation 5522 XP#
 Sinclair Erica 8BT12 A18
 Wagner Graham Corbinaire 624#
 Spurs Emulous Raven 14
 N Bar Emulation EXT#
 N Bar Primrose 2429#

Vance Top Dawg#
Sinclair Primrose 2TD8 A14# 17251784
 N Bar Primrose Y3051#

Individual Performance					EPD's				
BW	ADJ. WW	WR	ADJ. YW	YR	CED	BW	WW	MILK	YW
86	658	109	1053	108	0	1.7	51	18	84
Individual Performance				Mat	\$ Values				
ADG	Act. IMF	REA/100 lbs		\$EN	\$M	\$W	\$F	\$G	\$B
2.65	3.38	1.14		-2	51	42	55	26	81

Dam's Production WR: 9 @ 103 YR: 7 @ 105



N BAR PRIMROSE Y3051, THE DAM OF SINCLAIR EMULATION XXP, AND THE GRANDAM OF LOT 105.





THE DO IT ALL KIND!



SINCLAIR EXACTLY K177
 REG: *20419908 | DOB: 03/11/22 | TATTOO: K177

Sinclair Exactly 4U2
Sinclair Black Iron 8UR17 19169667
 Sinclair K BTY 6E4 A3

Sinclair Cloud Peak 504
Sinclair Primrose 7ON3 3FX71 18826313
 Sinclair Primrose 3FX71

Sinclair Executive 9XV2
 Sinclair Lady OR109 03S3
 N Bar Explosion#
 N Bar Kinochtry Beauty Y3881
 Basin Rainmaker 654X#
 Sinclair Eriskay 2N1 7883#
 Sinclair Emulation 0F4
 Sinclair Primrose 1UX15#

Individual Performance					EPD's				
BW	ADJ. WW	WR	ADJ. YW	YR	CED	BW	WW	MILK	YW
83	626	104	1058	103	6	-6	44	23	73
Individual Performance				Mat	\$ Values				
ADG	Act. IMF	REA/100 lbs	SEN	\$M	\$W	\$F	\$G	\$B	
2.81	3.24	1.10	5	73	43	60	24	84	
Dam's Production WR: 4 @ 103					YR: 1 @ 103				

The only 8UR17 son in the sale but a really powerful individual that is conservative birth and has plenty of performance with a stacked cowmaker pedigree.



SINCLAIR CLOUD PEAK 504, THE MATERNAL GRANDSIRE OF LOT 106.



SINCLAIR BLACK IRON K612
 REG: 20546291 | DOB: 02/26/22 | TATTOO: K612

Sinclair Executive 9XV2
Sinclair Exactly 4U2 17798945
 Sinclair Lady OR109 03S3

N Bar Prime Time D806#
Sinclair Primrose 2P12 B1# 17218799
 N Bar Primrose Z1692

N Bar Emulation Ext V722
 N Bar Primrose Y3051#
 R R Rito 707#
 Sinclair Lady OR109 03S3 4465
 Gardens Prime Time#
 N Bar Miss Emulous A404
 N Bar Moderation 9957
 N Bar Primrose 4320

Individual Performance					EPD's				
BW	ADJ. WW	WR	ADJ. YW	YR	CED	BW	WW	MILK	YW
80	549	101	1015	99	4	.2	40	20	65
Individual Performance				Mat	\$ Values				
ADG	Act. IMF	REA/100 lbs	SEN	\$M	\$W	\$F	\$G	\$B	
3.23	2.72	1.23	12	49	38	64	24	88	
Dam's Production WR: 7 @ 105					YR: 5 @ 106				





POWERHOUSE HERD BULL PROSPECT BY GARY!



SINCLAIR GARY K258

REG: *20425659 | DOB: 02/28/22 | TATTOO: K258

Connealy Niobrara 5451
Connealy Gary 18869442
 Hertha of Conanga 1639

Sinclair X-Changer 2FE9
Sinclair K Bty 4FV2 1TX4 17830565
 Sinclair K Bty 1TX4 8PV43

Connealy Confidence Plus#
 Brihtha of Conanga 167
 Connealy Consensus#
 Herra of Conanga 4462

Sinclair Emulation 5522 XP#
 Sinclair Blackie 7V3 2P18
 Sinclair XX 8X28
 Sinclair K Bty 8PV43 6FA5#

Individual Performance					EPD's				
BW	ADJ. WW	WR	ADJ. YW	YR	CED	BW	WW	MILK	YW
112	670	111	1225	119	-5	5.2	74	19	139
Individual Performance				Mat	\$ Values				
ADG	Act. IMF	REA/100 lbs		\$EN	\$M	\$W	\$F	\$G	\$B
3.51	3.35	1.04		-26	38	41	99	35	134

Dam's Production WR: 5 @ 100 YR: 4 @ 106

K258 is an outstanding, total-performance, and muscle Gary son whose progeny will really explode in the feedlot. A big, powerful bull that is very docile and will make some friends on sale day. Gary sons make great cows too. His dam is a powerhouse cow that is very feminine and is good-footed and uddered.



SINCLAIR X-CHANGER 2FE9, THE POPULAR
 LONG-TIME SINCLAIR HERDSIRE AND
 MATERNAL GRANDSIRE OF LOT 108.



SINCLAIR GARY K104

REG: *20425648 | DOB: 02/27/22 | TATTOO: K104

Connealy Niobrara 5451
Connealy Gary 18869442
 Hertha of Conanga 1639

Sinclair Emulation 6FX2
Sinclair K Bty 8FA6 8R46# 19169695
 Sinclair K Bty 8R46 39P3#

Connealy Confidence Plus#
 Brihtha of Conanga 167
 Connealy Consensus#
 Herra of Conanga 4462

Sinclair Emulation 0F4
 Sinclair K Bty 7FA18 4P85
 Rito Revolve OR5
 Sinclair K Bty 39P3 L309

Individual Performance					EPD's				
BW	ADJ. WW	WR	ADJ. YW	YR	CED	BW	WW	MILK	YW
93	678	112	936	91	-1	2.6	60	22	96
Individual Performance				Mat	\$ Values				
ADG	Act. IMF	REA/100 lbs		\$EN	\$M	\$W	\$F	\$G	\$B
1.78	3.88	.98		1	74	50	71	39	110

Dam's Production WR: 3 @ 106 YR: 2 @ 97

Original N-Bar Genetics Working For You

Staying true
 to the Legacy

110 SINCLAIR BLACK IRON K383
 REG: *20548768 | DOB: 03/27/22 | TATTOO: K383

Sinclair Exactly 4U2
Sinclair Black Iron 7UR26 19016137
 Sinclair Erica 2FE2 8BT12

Sinclair Executive 9XV2
 Sinclair Lady 0R109 03S3
 Sinclair Emulation 5522 XP#
 Sinclair Erica 8BT12 A18
 N Bar Emulation EXT#
 N Bar Primrose Y3051#
 Pinebank Waigroup 41/97#
 Sinclair Blackbird 4NI42 1C4

Sinclair Emulation XXP#
Sinclair C Pride 3XX14 9NZ12 17463874
 Sinclair C Pride 9NZ12 4NI42#

Individual Performance					EPD's				
BW	ADJ. WW	WR	ADJ. YW	YR	CE	BW	WW	MILK	YW
115	642	106	1036	106	2	6.3	55	20	94
Individual Performance					\$ Values				
ADG	Act. IMF	REA/100 lbs	SEN	\$M	\$W	\$F	\$G	\$B	
2.64	2.68	1.12	-2	73	29	69	29	97	

Dam's Production WR: 6 @ 102 YR: 5 @ 105



SINCLAIR EMULATION XXP, THE MATERNAL GRANDSIRE OF LOT 110.

112 SINCLAIR EMULATION K119
 REG: *20419936 | DOB: 03/02/22 | TATTOO: K119

N Bar Emulation EXT#
Sinclair Exquisite 0X3 19941920
 Basin Pamella F271

Emulation N Bar 5522#
 N Bar Primrose 2424
 Basin Rainmaker 654X#
 Basin Pamella 676X#
 Rito 2100 G D A R#
 Miss Wix 903 of Mc Cumber
 Sinclair Net Present Value#
 N Bar Miss Emulous A404

V D A R Rito 953#
Sinclair Ms Emulous 8VR5# 19250092
 Sinclair Ms Emulous 5PV72

Individual Performance					EPD's				
BW	ADJ. WW	WR	ADJ. YW	YR	CE	BW	WW	MILK	YW
96	610	101	1000	97	-3	3.4	37	30	69
Individual Performance					\$ Values				
ADG	Act. IMF	REA/100 lbs	SEN	\$M	\$W	\$F	\$G	\$B	
2.68	2.66	1.28	1	60	32	62	21	83	

Dam's Production WR: 3 @ 107 YR: 1 @ 97



V D A R RITO 953, A HIGHLY REGARDED PROVEN FEMALE SIRE AND THE MATERNAL GRANDSIRE OF LOT 112.

111 SINCLAIR EMULATION K316
 REG: *20400563 | DOB: 03/06/22 | TATTOO: K316

N Bar Emulation EXT#
Sinclair Exquisite 9X6 19477703
 Sinclair K Bty 9P31 V149#

Emulation N Bar 5522#
 N Bar Primrose 2424
 N Bar Prime Time D806#
 N Bar Kinochtry Beauty 4317#
 Sinclair Entrepreneur 8R101
 Sinclair Lady Ida 8XV12 C52#
 Sinclair Emulation 0F4
 Sinclair Lady Ida 0X16 04F3

Sinclair Broker 3RC33
Sinclair Lady Ida 6K6 4FX7 18488257
 Sinclair Lady Ida 4FX7 0X16

Individual Performance					EPD's				
BW	ADJ. WW	WR	ADJ. YW	YR	CE	BW	WW	MILK	YW
74	572	95	1012	99	11	-2.4	34	29	65
Individual Performance					\$ Values				
ADG	Act. IMF	REA/100 lbs	SEN	\$M	\$W	\$F	\$G	\$B	
2.97	2.68	1.04	6	51	39	64	29	93	

Dam's Production WR: 5 @ 102 YR: 3 @ 107

113 SINCLAIR EMULATION K142
 REG: *20561685 | DOB: 03/03/22 | TATTOO: K142

Sinclair Piney Creek 5FV5
Sinclair Emulation OFF5 19934796
 Sinclair Queen 6TT14 4XX17#

Sinclair X-Changer 2FE9
 Sinclair Ms Emulous 8F12
 Sinclair Sun Dial 4TL2
 Sinclair Queen 4XX17 9V4
 Sinclair Timeless 8BA4#
 Sinclair Primrose 1G13 6E11#
 Emulation 31#
 Sinclair Pride 7XT11 5H7

Sinclair Sun Dial 5TL43
Sinclair Pride 0TG15 0A9 19981193
 Sinclair Pride 0A9 7XT11

Individual Performance					EPD's				
BW	ADJ. WW	WR	ADJ. YW	YR	CE	BW	WW	MILK	YW
76	627	104	1062	103	10	-1.9	33	27	60
Individual Performance					\$ Values				
ADG	Act. IMF	REA/100 lbs	SEN	\$M	\$W	\$F	\$G	\$B	
2.83	2.97	.99	9	81	37	55	15	70	

Dam's Production WR: 1 @ 104 YR: 1 @ 103

114 SINCLAIR SPUR K323
 REG: *20400525 | DOB: 03/06/22 | TATTOO: K323

Connealy Stimulus 8419#
Connealy Spur 17304082#
 Jazza of Conanga 8594#

H A Power Alliance 1025#
 Black Creesa of Conanga 5332
 TC Grid Topper 355#
 Jemma of Conanga 5614
 Sinclair IN Time 6BT39
 Sinclair Blackbird 2P8 7079#
 N Bar Emulation EXT#
 Sinclair Primrose 6X40 A14

Sinclair Timeless 8BA4#
Sinclair Primrose 2TL29 9X99 17212171
 Sinclair Primrose XXX 9X99

Individual Performance					EPD's				
BW	ADJ. WW	WR	ADJ. YW	YR	CE	BW	WW	MILK	YW
81	637	106	1019	99	10	-5	44	28	77
Individual Performance					\$ Values				
ADG	Act. IMF	REA/100 lbs	SEN	\$M	\$W	\$F	\$G	\$B	
2.67	3.99	.99	4	86	46	67	39	106	

Dam's Production WR: 8 @ 104 YR: 6 @ 101



115 SINCLAIR POWDER RIVER K329
 REG: *2055596 | DOB: 03/07/22 | TATTOO: K329

Sinclair Piney Creek 6FV16
Sinclair Powder River 0FL7 19934800
 Sinclair Eriskay 5E3 2N11#

Sinclair X-Changer 2FE9
 Sinclair K Bty 2X7 6MB8#
 N Bar Explosion#
 Sinclair Eriskay 2N11 7883
 Sinclair Entrepreneur 8R101
 Sinclair Lady Ida 8XV12 C52#
 N Bar Prime Time D806#
 N Bar Miss Emulous B514

Sinclair Broker 3RC33
Sinclair Ms Emulous 6K1 2P7 18487748
 Sinclair Ms Emulous 2P7 D47

Individual Performance					EPD's				
BW	ADJ. WW	WR	ADJ. YW	YR	CED	BW	WW	MILK	YW
84	627	104	1005	98	7	-1.5	34	29	61
Individual Performance				Mat	\$ Values				
ADG	Act. IMF	REA/100 lbs		\$EN	\$M	\$W	\$F	\$G	\$B
2.53	4.16	.98		9	68	40	59	39	98
Dam's Production WR: 5 @ 102 YR: 3 @ 102									

117 SINCLAIR LONGMIRE K137
 REG: *20419911 | DOB: 03/03/22 | TATTOO: K137

S A V Renown 3439#
Reisig Longmire 8326 19448009
 BUF Eriskay 7417

Rito 707 of Ideal 3407 7075
 S A V Blackcap May 4136
 N Bar Emulation EXT#
 J Bar 7 Eriskay Q13-71K1#
 Leachman Right Time#
 Sitz Everelda Entense 1905
 Sinclair Pioneer 1RF1
 Sinclair Lady 1A4 9JP22

BT Right Time 24J#
Sinclair Lady 8BT7 3RM21 19169633
 Sinclair Lady 3RM21 1A4

Individual Performance					EPD's				
BW	ADJ. WW	WR	ADJ. YW	YR	CED	BW	WW	MILK	YW
93	633	105	1011	98	1	2.2	40	24	68
Individual Performance				Mat	\$ Values				
ADG	Act. IMF	REA/100 lbs		\$EN	\$M	\$W	\$F	\$G	\$B
2.63	2.88	1.12		5	58	35	51	17	68
Dam's Production WR: 2 @ 106 YR: 2 @ 101									



BT RIGHT TIME 24J, THE BULL DEEMED THE COWMAKER, AND THE MATERNAL GRANDSIRE OF LOT 117.

REF SIRE REISIG LONGMIRE 8326
 REG: 19448009 | DOB: 08/30/18 | TATTOO: 8326

Rito 707 of Ideal 3407 7075
S A V Renown 3439 17633839#
 S A V Blackcap May 4136

R R Rito 707#
 Ideal 3407 of 1418 076
 S A V 8180 Traveler 004#
 S A V May 2397#
 Emulation N Bar 5522#
 N Bar Primrose 2424
 Sitz Traveler 8180#
 E F Eriskay Q13 7107

N Bar Emulation EXT#
BUF Eriskay 7417 16118882
 J Bar 7 Eriskay Q13-71K1#

CED	BW	WW	YW	SC	MILK	DOC	MARB	REA	\$M	\$W	\$F	\$B	\$C
8	-1.1	36	72	.72	22	18	-.06	.58	54	32	51	70	145

Longmire was purchased from Reisig Cattle to add the Rito influence while still enhancing EXT to another generation. His proven dam carried a stacked pedigree of proven maternal and performance giants for many generations. His first daughters are now in production and are the favorite sire group of 2 yr olds. Don't overlook the Longmire sons!

118 SINCLAIR LONGMIRE K281
 REG: *20400568 | DOB: 03/03/22 | TATTOO: K281

S A V Renown 3439#
Reisig Longmire 8326 19448009
 BUF Eriskay 7417

Rito 707 of Ideal 3407 7075
 S A V Blackcap May 4136
 N Bar Emulation EXT#
 J Bar 7 Eriskay Q13-71K1#
 Sinclair Vision X 857
 Sinclair K Bty OF1 2V3
 Sinclair Emulation 5522 XP#
 Sinclair Nalie 8P6 D17

Sinclair Vision 3SX12
Sinclair Nalie 6SX28 1FE19 18770797
 Sinclair Nalie 1FE19 8P6

Individual Performance					EPD's				
BW	ADJ. WW	WR	ADJ. YW	YR	CED	BW	WW	MILK	YW
65	576	96	1010	99	14	-4.5	28	25	56
Individual Performance				Mat	\$ Values				
ADG	Act. IMF	REA/100 lbs		\$EN	\$M	\$W	\$F	\$G	\$B
2.94	3.26	1.14		6	54	31	42	31	73
Dam's Production WR: 4 @ 102 YR: 2 @ 104									

116 SINCLAIR LONGMIRE K537
 REG: 20546279 | DOB: 02/14/22 | TATTOO: K537

S A V Renown 3439#
Reisig Longmire 8326 19448009
 BUF Eriskay 7417

Rito 707 of Ideal 3407 7075
 S A V Blackcap May 4136
 N Bar Emulation EXT#
 J Bar 7 Eriskay Q13-71K1#
 Rito Revolve OR5
 Sinclair K BTY 6PV5 25F3
 N Bar Shadow X4124
 Sinclair C Pride 5P97 3G32

Sinclair Rito 9R7
Sinclair C Pride 7RV1 8S20 18829730
 Sinclair C Pride 8S20 5P97

Individual Performance					EPD's				
BW	ADJ. WW	WR	ADJ. YW	YR	CED	BW	WW	MILK	YW
78	519	96	980	96	9	-1.8	41	17	70
Individual Performance				Mat	\$ Values				
ADG	Act. IMF	REA/100 lbs		\$EN	\$M	\$W	\$F	\$G	\$B
3.31	2.34	1.08		4	68	35	57	14	71
Dam's Production WR: 3 @ 102 YR: 2 @ 100									

119 SINCLAIR LONGMIRE K514
 REG: 20546275 | DOB: 02/09/22 | TATTOO: K514

S A V Renown 3439#
Reisig Longmire 8326 19448009
 BUF Eriskay 7417

Rito 707 of Ideal 3407 7075
 S A V Blackcap May 4136
 N Bar Emulation EXT#
 J Bar 7 Eriskay Q13-71K1#
 Sinclair X-Changer 2FE9
 Sinclair Ms Emulous 8F12
 Sinclair Preview 2TL6
 Sinclair Bella Donna 1UX4#

Sinclair Piney Creek 5FV5
Sinclair Bella Donna 9FF4 19475288
 Sinclair Bella Donna 7TA12#

Individual Performance					EPD's				
BW	ADJ. WW	WR	ADJ. YW	YR	CED	BW	WW	MILK	YW
70	502	93	992	97	11	-2.3	28	23	53
Individual Performance				Mat	\$ Values				
ADG	Act. IMF	REA/100 lbs		\$EN	\$M	\$W	\$F	\$G	\$B
3.60	2.59	1.04		12	69	29	53	15	68
Dam's Production WR: 1 @ 93 YR: 1 @ 97									

120 SINCLAIR LONGMIRE K584
 REG: *20548776 | DOB: 02/21/22 | TATTOO: K584

S A V Renown 3439#
Reisig Longmire 8326 19448009
 BUF Eriskay 7417

Sinclair Sun Dial 5TL43
Sinclair Blkbird 9TG19 5U34 19472588
 Sinclair Blkbird 5U34 0P29

Rito 707 of Ideal 3407 7075
 S A V Blackcap May 4136
 N Bar Emulation EXT#
 J Bar 7 Eriskay Q13-71K1#
 Sinclair Timeless 8BA4#
 Sinclair Primrose 1G13 6E11#
 Sinclair Executive 9XV2
 Sinclair Blkbird 0P29 F188

Individual Performance					EPD's				
BW	ADJ. WW	WR	ADJ. YW	YR	CE	BW	WW	MILK	YW
74	563	93	1016	99	10	-2.1	32	23	67
Individual Performance				Mat	\$ Values				
ADG	Act. IMF	REA/100 lbs		\$EN	\$M	\$W	\$F	\$G	\$B
2.98	3.56	1.15		5	67	30	63	20	82
Dam's Production WR: 2 @ 94					YR: 1 @ 99				

123 SINCLAIR X-PLUS K285
 REG: *20400576 | DOB: 03/03/22 | TATTOO: K285

N Bar Emulation EXT#
Sinclair Emulation XXP 15355048#
 N Bar Primrose Y3051#

Sinclair Pioneer 1RF1
Sinclair Lady Ida 7RM8 3FE19 18845216
 Sinclair Lady Ida 3FE19 7V63

Emulation N Bar 5522#
 N Bar Primrose 2424
 N Bar Emulation EXT#
 N Bar Primrose 2429#
 PBC 707 1M F0203#
 N Bar Miss Emulous A404
 Sinclair Emulation 5522 XP#
 Sinclair Laady Ida 7V63 B5

Individual Performance					EPD's				
BW	ADJ. WW	WR	ADJ. YW	YR	CE	BW	WW	MILK	YW
95	559	93	1007	98	0	2.1	41	20	79
Individual Performance				Mat	\$ Values				
ADG	Act. IMF	REA/100 lbs		\$EN	\$M	\$W	\$F	\$G	\$B
2.69	3.38	.98		0	54	29	71	32	103
Dam's Production WR: 4 @ 103					YR: 3 @ 106				

121 SINCLAIR LONGMIRE K349
 REG: *20400536 | DOB: 03/12/22 | TATTOO: K349

S A V Renown 3439#
Reisig Longmire 8326 19448009
 BUF Eriskay 7417

Sinclair Emulation 1A2
Sinclair K Bty 4AA2 1P16 17821819
 Sinclair K Bty 1P16 E118

Rito 707 of Ideal 3407 7075
 S A V Blackcap May 4136
 N Bar Emulation EXT#
 J Bar 7 Eriskay Q13-71K1#
 Emulation 31#
 Sinclair K Bty 9R107 E118
 N Bar Prime Time D806#
 N Bar Kinochtry Beauty Z1925

Individual Performance					EPD's				
BW	ADJ. WW	WR	ADJ. YW	YR	CE	BW	WW	MILK	YW
77	573	95	984	96	10	-1.9	33	22	55
Individual Performance				Mat	\$ Values				
ADG	Act. IMF	REA/100 lbs		\$EN	\$M	\$W	\$F	\$G	\$B
2.76	3.06	1.22		13	71	34	48	26	74
Dam's Production WR: 7 @ 97					YR: 4 @ 94				



SINCLAIR EMULATION XXP, THE
 SIRE OF LOTS 123-125.

122 SINCLAIR LONGMIRE K549
 REG: 20546285 | DOB: | TATTOO:

S A V Renown 3439#
Reisig Longmire 8326 19448009
 BUF Eriskay 7417

Sinclair Traveler 6Q1
Sinclair Blkcap Mc 9QR14 19602947
 Sinclair Blkcap Mc 7ON8

Rito 707 of Ideal 3407 7075
 S A V Blackcap May 4136
 N Bar Emulation EXT#
 J Bar 7 Eriskay Q13-71K1#
 Q A S Traveler 23-4
 Rito Majesty 5A61 of F0203
 Sinclair Cloud Peak 504
 Sinclair Blkcap Mc 0XT28

Individual Performance					EPD's				
BW	ADJ. WW	WR	ADJ. YW	YR	CE	BW	WW	MILK	YW
					-0.8	33	63	23	
Individual Performance				Mat	\$ Values				
ADG	Act. IMF	REA/100 lbs		\$EN	\$M	\$W	\$F	\$G	\$B
3.09		1.27		7	71	31	60	18	78
Dam's Production WR: @					YR: @				

124 SINCLAIR X-PLUS K009
 REG: 20551847 | DOB: 02/21/22 | TATTOO: K009

N Bar Emulation EXT#
Sinclair Emulation XXP 15355048#
 N Bar Primrose Y3051#

N Bar Explosion#
Sinclair Blackcap 5E5 2N10 14969782
 Sinclair Blackcap 2N10 7856

Emulation N Bar 5522#
 N Bar Primrose 2424
 N Bar Emulation EXT#
 N Bar Primrose 2429#
 N Bar Emulation EXT#
 N Bar Kinochtry Beauty 4288
 D H D Traveler 6807#
 Papa Blackcap Mc Henry 7856#

Individual Performance					EPD's				
BW	ADJ. WW	WR	ADJ. YW	YR	CE	BW	WW	MILK	YW
ET	490	85	959	91	3	.5	33	25	64
Individual Performance				Mat	\$ Values				
ADG	Act. IMF	REA/100 lbs		\$EN	\$M	\$W	\$F	\$G	\$B
3.29	3.01	1.09		2	44	31	66	34	100
Dam's Production WR: 13 @ 105					YR: 10 @ 101				



125 SINCLAIR X-PLUS K105
 REG: *20419881 | DOB: 02/27/22 | TATTOO: K105

N Bar Emulation EXT#
Sinclair Emulation XXP 15355048
 N Bar Primrose Y3051#

N Bar Shadow X4124
Sinclair Delia 2S18 404 17251756
 Octoraro Delia 404

Emulation N Bar 5522#
 N Bar Primrose 2424
 N Bar Emulation EXT#
 N Bar Primrose 2429#
 N Bar Emulation EXT#
 N Bar Enchantress 4908#
 Emulation N Bar 5522#
 Octoraro Delia 503

Individual Performance					EPD's				
BW	ADJ. WW	WR	ADJ. YW	YR	CED	BW	WW	MILK	YW
80	595	99	963	94	6	-.8	36	20	58
Individual Performance				Mat	\$ Values				
ADG	Act. IMF	REA/100 lbs		\$EN	\$M	\$W	\$F	\$G	\$B
2.47	3.20	1.03		7	49	34	52	28	79

Dam's Production WR: 9 @ 99 YR: 8 @ 96

The dam of Lot 125, 2S18 a beautiful N Bar Shadow daughter, is shown in the background of this page.



N BAR SHADOW X4124, THE RARE AND VALUABLE LEGENDARY MATERNAL SIRE AND MATERNAL GRANDSIRE OF LOT 125.

127 SINCLAIR BLACK IRON K001
 REG: 20551771 | DOB: 02/10/22 | TATTOO: K001

Sinclair Executive 9XV2
Sinclair Exactly 4U2 17798945
 Sinclair Lady 0R109 0353

 Sinclair Rito Legacy 3R9
Sinclair C Pride 1RL12 J204 16934634
 N Bar Clova Pride WP C2009

N Bar Emulation Ext V722
 N Bar Primrose Y3051#
 R R Rito 707#
 Sinclair Lady 03S3 4465
 R R Rito 707#
 Ideal 4465 of 6807 4286
 N Bar Shadow X4124
 N Bar Clova Pride Z1553

Individual Performance					EPD's				
BW	ADJ. WW	WR	ADJ. YW	YR	CED	BW	WW	MILK	YW
ET	579	100	870	100	4	.2	40	21	64
Individual Performance				Mat	\$ Values				
ADG	Act. IMF	REA/100 lbs		\$EN	\$M	\$W	\$F	\$G	\$B
2.35	2.11	1.05		10	57	41	49	14	63

Dam's Production WR: 7 @ 105 YR: 5 @ 104

128 SINCLAIR BLACK IRON K328
 REG: *20400524 | DOB: 03/06/22 | TATTOO: K328

Sinclair Executive 9XV2
Sinclair Exactly 4U2 17798945
 Sinclair Lady 0R109 0353

Sinclair Timeless 8BA4#
Sinclair Lady 2TL13 0X35 17199694
 Sinclair Lady 0X35 3M17

N Bar Emulation Ext V722
 N Bar Primrose Y3051#
 R R Rito 707#
 Sinclair Lady 03S3 4465
 Sinclair IN Time 6BT39
 Sinclair Blackbird 2P8 7079#
 N Bar Emulation EXT#
 Sinclair Lady 3M17 4465#

Individual Performance					EPD's				
BW	ADJ. WW	WR	ADJ. YW	YR	CED	BW	WW	MILK	YW
91	695	115	954	93	2	.4	42	23	60
Individual Performance				Mat	\$ Values				
ADG	Act. IMF	REA/100 lbs		\$EN	\$M	\$W	\$F	\$G	\$B
1.72	2.93	.99		12	55	45	48	23	71

Dam's Production WR: 8 @ 110 YR: 6 @ 102



SINCLAIR LADY 3M17 4465, THE FOUNDATION GREAT GRANDAM OF LOT 128.

126 SINCLAIR EMPEROR K355
 REG: *20548765 | DOB: 03/16/22 | TATTOO: K355

Sinclair Emperor 0XT51
Sinclair Emperor 6X02 18486466
 Sinclair Ms Emulous 2V20 A40

Sinclair Line-XX 2H1
Sinclair Blkcap 6HX1 4U5 18486521
 Sinclair Blkcap 4U5 602

Sinclair Extra 4X13#
 Sinclair Blkbird 7OC10 J472
 N Bar Emulation Ext A1747
 N Bar Miss Emulous X3091#
 Sinclair Line X 8XV6
 Sinclair Primrose 9IT13 5R47
 Sinclair Executive 9XV2
 Sinclair Blkcap 602 A26

Individual Performance					EPD's				
BW	ADJ. WW	WR	ADJ. YW	YR	CED	BW	WW	MILK	YW
83	695	115	978	95	9	-.9	36	23	55
Individual Performance				Mat	\$ Values				
ADG	Act. IMF	REA/100 lbs		\$EN	\$M	\$W	\$F	\$G	\$B
2.04	3.27	1.01		12	67	38	54	32	86

Dam's Production WR: 5 @ 107 YR: 3 @ 104



129 SINCLAIR MT TIME K566
 REG: 20588230 | DOB: 02/18/22 | TATTOO: K566

N Bar Prime Time D806#
Sinclair MT Time 2P77 14311980
 N Bar Enchantress 4906

Gardens Prime Time#
 N Bar Miss Emulous A404
 Emulation N Bar 5522#
 Coffey Enchantress 424
 Band 234 of Ideal 3163#
 Q A S Blackbird Eve 601 1
 Papa Rito T Intense DHD 6844#
 Ideal 4465 of 6807 4286

Q A S Traveler 23-4#
Sinclair Lady 0Q21 0C4 20578517
 Sinclair Lady 0C4 4465

Individual Performance					EPD's				
BW	ADJ. WW	WR	ADJ. YW	YR	CED	BW	WW	MILK	YW
78	503	93	975	100	6	-1.2	2.6	2.6	49
Individual Performance				Mat	\$ Values				
ADG	Act. IMF	REA/100 lbs	\$EN	\$M	\$W	\$F	\$G	\$B	
3.45	2.54	1.22	11	42	29	49	22	71	
Dam's Production WR: 1 @ 93 YR: 1 @ 100									



SINCLAIR LADY 0C4 4465, THE FAMOUS GRANDAM OF LOT 129.

131 SINCLAIR K365 COMMERCIAL
 REG: *626801713 | DOB: 03/24/22 | TATTOO: K365

Sinclair Emulation 2A10
Sinclair Edella 7A51 5XX17# 18805003
 Sinclair Edella 5XX17 10K1

Emulation 31#
 N Bar Enchantress WP F3619
 Sinclair Emulation XXP#
 Sinclair Edella 10K1 7X53

Individual Performance					EPD's				
BW	ADJ. WW	WR	ADJ. YW	YR	CED	BW	WW	MILK	YW
82	649	108	1038	107					
Individual Performance				Mat	\$ Values				
ADG	Act. IMF	REA/100 lbs	\$EN	\$M	\$W	\$F	\$G	\$B	
2.60	3.26	1.19							
Dam's Production WR: 4 @ 108 YR: 1 @ 107									

132 SINCLAIR K376 COMMERCIAL
 REG: *626801612 | DOB: 03/26/22 | TATTOO: K376

Basin Rainmaker 914A
Sinclair Lady Ida 3001 0XH4# 17463029
 Sinclair Lady Ida 0XH4 3541

Basin Rainmaker 654X#
 Basin Blackbird 584Y#
 Sinclair Extravagant 6X7#
 Sinclair Lady Ida 3541 J424

Individual Performance					EPD's				
BW	ADJ. WW	WR	ADJ. YW	YR	CED	BW	WW	MILK	YW
90	690	114	1050	108					
Individual Performance				Mat	\$ Values				
ADG	Act. IMF	REA/100 lbs	\$EN	\$M	\$W	\$F	\$G	\$B	
2.41	2.77	1.05							
Dam's Production WR: 8 @ 110 YR: 6 @ 105									

130 SINCLAIR TIMELESS K134
 REG: *20419873 | DOB: 03/03/22 | TATTOO: K134

Sinclair IN Time 6BT39
Sinclair Timeless 8BA4 16027579#
 Sinclair Blackbird 2P8 7079#

BT Right Time 24J#
 N Bar Miss Emulous A404
 N Bar Prime Time D806#
 Rito 707 of Ideal 089 7076
 N Bar Shadow X4124
 N Bar Miss Emulous A404
 O C C Great Plains 943G#
 Sinclair Primrose 4F3 G260

Sinclair Vision X 857
Sinclair Primrose 1SX15 16909567
 Sinclair Primrose 80C35 4F3

Individual Performance					EPD's				
BW	ADJ. WW	WR	ADJ. YW	YR	CED	BW	WW	MILK	YW
80	571	95	989	96	14	-3.8	19	29	42
Individual Performance				Mat	\$ Values				
ADG	Act. IMF	REA/100 lbs	\$EN	\$M	\$W	\$F	\$G	\$B	
2.87	3.2	1.05	10	52	26	48	29	77	
Dam's Production WR: 9 @ 99 YR: 8 @ 96									



CONVENIENCE BUYING
Online Bids
 DV Auction & Cattle USA
 See inside back cover for details

DVAuction
 Broadcasting Real-Time Auctions





**THANK YOU TO
OUR CUSTOMERS
FOR YOUR
CONTINUED
SUPPORT IN
PERSON AND
ONLINE**



60 COMMERCIAL REPLACEMENT HEIFERS

Notice: The Commercial heifers will NOT be at the sale site. They will sell via video.

The commercial heifers are home-raised and are selected right out of the middle of the registered replacement heifer pen. All heifers will be vaccinated with Virashield 6 VL5 Somnus and administered pour-on. Videos will be available on Sinclaircattle.com, dvauction.com or by request. The heifers are located at Veltkamp Livestock Manhattan, MT and sell with the option to continue being developed and AI'd there, at cost. The buyer has the option to purchase 5 or more heifers on a gate cut basis. Semen available for commercial heifers at a reduced rate. Contact the Sinclair Cattle Company team for details. Commercial heifer trucking can be arranged.





SINCLAIR CATTLE COMPANY, INC.

**WE'RE EXCITED ABOUT THE
FUTURE. HERE'S A SNEAK PEEK
AT SIRE GROUPS FOR NEXT YEAR!**

KG Justified 3023

Connealy Gary

Sinclair Timeless 8BA4

Sinclair Executive 9UF3

Coleman Keen

Leachman Bold Driver

Sinclair Exquisite 9X6

Sinclair Extreme 3VA10

Sinclair Justified J574

Reisig Longmire

CONVENIENCE OPTIONS

BROADCASTING ON

This sale will be broadcast live on the internet.



Never Miss An Auction Again!
Watch & Bid online for FREE!

Visit www.DVAuction.com and Register Today

For General Questions Please Contact our Office:
402-316-5460 or support@dvauction.com



LIVE CATTLE AUCTIONS

1. Go to www.CattleUSA.com
2. First time users must register as a viewer.
3. In the 'Live Auctions' tab select the sale that you wish to register as a buyer (only if you wish to buy) and click the 'Submit' button.
4. Fill out the required contact and banking information then click the 'Proceed' button.
5. After you have been approved as a buyer you will receive a confirmation email. On sale day, log in and click the green 'View' button for our sale. You will have the bid console available to place your online bids. Click on 'Bid Now' to place a bid.
6. The bid received by the auctioneer will be the amount showing in the 'Price' box in the bid console.

High speed internet required for viewing & bidding.
Questions call 307-684-0789

INSURANCE

For Insurance Needs Contact: **John Goggins**
James Allen/Harding and Harding Insurance
(Mortality Insurance Only)

6 month = 4% of Purchase Price

1 year = 6% of Purchase Price

john@westernagreporter.com
406-698-4149



SINCLAIR
CATTLE COMPANY

Thank You

Gary Bischel
Blacktooth Large Animal Veterinary Services
Buffalo Livestock Marketing
Caryl Cammack, Caryl and Company
Sandi Hoffman
Johnson County Cattlewomen
Matt Lane
Dan Reinke and Family
Gordon Taylor
Warren Reinke
Roduner Family
Jared Schafer
Thad and Heidi Stoltz and Crew
Phil Veltkamp and Crew





PO Box 1158
Buffalo, WY 82834

FIRST CLASS MAIL • DATED MATERIAL

ANNUAL PRODUCTION SALE

MARCH 25, 2023 • 1:00 PM
BUFFALO, WYOMING

Original N-Bar Genetics Working For You

*Staying true
to the* **Legacy**

