



SINCLAIR
CATTLE COMPANY

2020

PRODUCTION SALE | MARCH 28

• **STAYING TRUE TO THE LEGACY.** •



SINCLAIR CATTLE COMPANY

PO Box 1158 | Buffalo, WY 82834
www.sinclaircattle.com

Dear Cattlemen and Friends of the Sinclair Program,

On behalf of the Sinclair Team, we would like to thank you for your interest in our program. It is our distinct pleasure to invite you to our production sale. We look forward to meeting and visiting with you all to discuss your genetic seedstock needs.

A new era is dawning at Sinclair Cattle Company! Big changes are taking place daily. The program is moving forward with a clear Vision and Commitment that is totally focused on keeping the long-term success of our customers in mind, first and foremost. We have recently selected our elite foundation cows with excellent production record history to become donor females to fast track the finest genetics we can offer while improving uniformity and consistency in the bull offering. We are constantly working hard to become your seedstock supplier of choice for outstanding quality Angus genetics that have phenomenal longevity.

The Sinclair Team is extremely excited about this year's offering. There are many rare pedigree matings that cannot be replicated anywhere else. They are unique breeding tools that blend premier sires for maternal and performance traits designed to raise the optimum range cow. Sinclair is getting serious about performance! The Sinclair Team evaluated the bull offering on January 24th and cut it in half, bringing you only the very best. We believe you will be impressed with the dams production data throughout the sale offering on both bulls and females.

About this year's heifer offering: We hand-picked 40 registered females to offer you this year, selected primarily from pedigree and performance. These are from the heart of the herd. The commercial replacements come right out of the middle of the registered heifer pen. We have added buyer options for these commercial heifers this year. See their page for further details. This spring every female in the herd will be planned mated and AI'd to a very few outstanding sires of the breed to increase the number of half and ¾ brothers and to greatly improve consistency in the genetic base. At Sinclair, we are pushing the envelope to increase quality, performance and fertility as rapid as possible.

Thank you very much for your interest in our program. We are enthused to discuss our sale offering with you. Each member of the Sinclair Team is very familiar with the offering. If we can assist you in any way please give us a call anytime.

The door is always open, if you are in the area we would love for you to stop by for a visit.

Best Regards,

J Duncan Smith



SINCLAIR
CATTLE COMPANY

2020

PRODUCTION SALE | MARCH 28

BUFFALO LIVESTOCK AUCTION
BUFFALO, WYOMING

Selling : 122 Yearling Bulls 40 Yearling Registered Heifers 79 Commercial Replacement Heifers

11:30 am Lunch | 1:00 pm Sale Begins

Your Sinclair Sale
Company Team

STEVE BLANKLEY II
240-625-5415

LANCE CLINE
785-564-1744

MIKE BAZZLE
540-421-7411

LOGAN BAKER
307-254-1477

SALE INFORMATION

AUCTIONEER

Roger Jacobs 406-698-7686

SALE DAY DIRECT BID

SINCLAIR REPRESENTATIVE PHONES

Steve Blankley II 240-625-5415
Lance Cline 785-564-1744
Mike Bazzle 540-421-7411
Logan Baker 307-254-1477
Greg Golden 301-730-6546

BUFFALO LIVESTOCK AUCTION

Gregg and Danny Matney 307-684-0789

Sale Day Phone **307-684-9462**

LIVESTOCK PUBLICATION REPS

Kurt Kangas 406-254-7576 American Angus Association
Curt Cox 307-630-4604 Wyoming Livestock Roundup
Dwayne Dietz 406-672-8500 Western Ag Reporter
Dennis Ginkens 406-671-9839 TriState Livestock News
Jeff Thomas 406-581-8859 Prairie Star

BIDS

Buyer may call or send their bids to any of the sale professionals listed above or directly to Sinclair Cattle Company. Complete satisfaction is guaranteed for cattle purchased sight unseen as well as all bulls sold.

SALE LOCATION

Buffalo Livestock Auction, Buffalo Wyoming

VIDEOS

Videos of the sale offering available at www.sinclaircattle.com and billpelton.com

TERMS & CONDITIONS

Cash. All cattle sell under the standard terms & conditions as adopted by the American Angus Association printed in the back of this book.

INSURANCE

Mortality Insurance representatives will be available sale day.

SALE BLOCK

All announcements from the sale block on sale day take precedence over material printed in this sale book.

SALE ORDER

Cattle will NOT sell in catalog order. Sale order will be posted on website and social media. This catalog represents the results of careful selection of this sale offering. We invite you to bid with confidence.

FOOD

Coffee and donuts in the morning. A beef lunch provided starting at 11:30 am. Snacks and refreshments available Friday while viewing.

HEIFERS

For more information see page 38

CONVENIENCE BUYING

Real -Time Phone Bids

Bill Pelton Sale Day Conference Call

Online Bids

DV Auction & Cattle USA

See inside back cover for details

FREE DELIVERY TERMS

- A **\$100/head discount** will be given if buyer hauls on sale day.
- Sinclair Cattle Company offers free delivery in Wyoming and bordering states to a central stockyard point or dropoff location on all bull purchases. Beyond that, bulls will be delivered at cost.
- Sinclair Cattle Company will help coordinate delivery and keep costs as low as possible. The trucking bill will come from Sinclair Cattle Company this year.
- For our customers from the Northeast and East, cattle will be delivered to Sinclair Cattle Company's Warfordsburg, PA location and delivery will be coordinated from there. Call Steve Blankley II or Greg Golden for further details.
- Bulls will be delivered as promptly as possible. If longer term care is needed please ask a Sinclair Team Representative for details.

GUARANTEE

Guaranteed customer satisfaction, with a "No Holds Barred" guarantee on the bulls through the first breeding season. Breeding season consists of 90 days from turnout. Contact a Sinclair Cattle Company Representative as soon as possible after finding an injury. We recommend Mortality Insurance against death.

VOLUME DISCOUNTS

5% discount on 5 or more bulls and 10% discount on 10 or more bulls

RETAINING INTEREST

Sinclair Cattle Company is retaining one-third semen revenue sharing interest in each individual bull in the sale unless otherwise stated.

HOTELS:

These are all within a block or within walking distance of one another.

Visit buffalowyo.com to view places to dine and tour in and around Buffalo, Wyoming.	Hampton Inn and Suites	307-684-8899
	Holiday Inn Express	307-684-9900
	SureStay Plus Hotel	307-684-9564
	The Super 8	307-684-2531
	Buffalo Inn	307-684-7000
	Rodeway Inn	307-684-5505
	Downtown	
	The Historic Occidental Hotel	307-684-0451
	The Big Horn Motel	307-684-7822
	The Mansion House Inn	307-684-2218



Special room rates have been arranged. Go to www.sinclaircattle.com and click on the Hampton Inn link by 3/14/20 to reserve your room.

AIRPORTS SERVING BUFFALO, WYOMING:

Johnson County Airport, Buffalo	307-684-9672
Campbell County Airport, Gillette	307-686-1042
Sheridan County Airport, Sheridan	307-674-4222
Natrona County Airport, Casper	307-472-6688
Billings Logan International, 169 miles	2hr 40 min. drive

EPDS

EPDs current as of 2/28/2020

THE UNDISPUTED KING OF MATERNAL GREATNESS



N BAR EMULATION EXT

EXT sires very productive cows that live well into their teens, maintaining perfect feet and udders. Daughters and sons display excellent lifelong fertility and sons perform at the top of their contemporaries. EXT is responsible for having more influence on the Angus population than any other sire in breed history – for the right reasons. EXT’s influence never go out of style. This group of sons are as consistent and as good as any produced in recent times.



N Bar Primrose 2424

Reg: #10776479 • DOB: 2/1/1986 • Tattoo: U23

Emulation 31	FCR Elation Lad 652
Emulation N Bar 5522	Miss Emulous 243
Ankony 8F78 Lass 8F275	Ankonian Dynamo 27542
Emulation 31	Ankony B999 Lass 26832
N Bar Primrose 2424	FCR Elation Lad 652
Primrose N Bar 9962	Miss Emulous 243
	Lad 118K of JRS
	N Bar Primrose 5329

The Sinclair foundation Pathfinder Sire is the most widely used sire in the history of the Angus breed.

N Bar Emulation EXT lived to 14 years of age and 34 years after his birth he remains the breed’s standard for combining fertility, longevity, structural soundness and udder quality with balanced performance and carcass merit.

PREMIER HERDSIRE PROSPECT!



SINCLAIR EXQUISITE 9X15

REG: 19602928 | DOB: 01/24/19 | TATTOO: 9X15

Emulation N Bar 5522#
N Bar Emulation EXT# 10776479
 N Bar Primrose 2424



PBC 707 1M F0203#
Rito Majesty 5A61 of F0203 12450216
 B A F Excel Lady 2104

Emulation 31#
 Ankony 8F78 Lass 8F275
 Emulation 31#
 Primrose N Bar 9962
 R R Rito 707#
 Evocate Princess T
 Rito Excel 809#
 Emulous Bell 2225

Dam's
 Production
 WR: 3 @ 107
 YR: 4 @ 106

Individual Performance					EPD's				
BW	ADJ. WW	WR	ADJ. YW	YR	CED	BW	WW	MILK	YW
ET	756	100	1281	100	4	2.3	33	20	57
Individual Performance				Mat	\$ Values				
ADG	Act. IMF	REA/100 lbs		\$EN	\$M	\$W	\$F	\$G	\$B
3.25	4.63	1.12		15	36	29	61	24	85

Dam to Lots 1-4 | Rito Majesty 5A61 of F0203

Retaining 1/2 semen interest. Selling full possession. Sinclair will have this bull collected following the sale before delivery. 9X15 has been a standout since day one and is the man among boys of the bull pen. He has dominated his contemporaries in every aspect of performance and is full of muscle with the time-tested EXT-Rito heritage. His dam, Majesty 5A61, was an elite donor in the program during her career. Sinclair is really excited about the future of this sire and will sample him heavily in the program this spring.

LEGENDARY FLUSH BROTHERS!



2



SINCLAIR EXQUISITE 9X14

REG: 19602927 | DOB: 01/23/19 | TATTOO: 9X14

Individual Performance					EPD's				
BW	ADJ. WW	WR	ADJ. YW	YR	CED	BW	WW	MILK	YW
ET	679	100	1197	100	4	2.3	33	20	57
Individual Performance				Mat	\$ Values				
ADG	Act. IMF	REA/100 lbs		\$EN	\$M	\$W	\$F	\$G	\$B
3.22	4.26	1.16		15	36	29	66	24	90



SINCLAIR EXQUISITE 9X12

REG: 19602925 | DOB: 02/23/19 | TATTOO: 9X12

Individual Performance					EPD's				
BW	ADJ. WW	WR	ADJ. YW	YR	CED	BW	WW	MILK	YW
ET	625	100	1071	100	4	2.3	33	20	57
Individual Performance				Mat	\$ Values				
ADG	Act. IMF	REA/100 lbs		\$EN	\$M	\$W	\$F	\$G	\$B
2.77	5.96	.97		15	36	29	54	25	79



SINCLAIR EXQUISITE 9X11

REG: 19602924 | DOB: 01/29/19 | TATTOO: 9X11

Individual Performance					EPD's				
BW	ADJ. WW	WR	ADJ. YW	YR	CED	BW	WW	MILK	YW
ET	678	100	1153	100	4	2.3	33	20	57
Individual Performance				Mat	\$ Values				
ADG	Act. IMF	REA/100 lbs		\$EN	\$M	\$W	\$F	\$G	\$B
2.95	5.45	1.02		15	36	29	56	24	80

Emulation N Bar 5522#
N Bar Emulation EXT# 10776479
 N Bar Primrose 2424



PBC 707 1M F0203#
Rito Majesty 5A61 of F0203 12450216
 B A F Excel Lady 2104

Emulation 31#
 Ankony 8F78 Lass 8F275
 Emulation 31#
 Primrose N Bar 9962
 R R Rito 707#
 Evocate Princess T
 Rito Excel 809#
 Emulous Bell 2225

Dam's
 Production
 WR: 3 @ 107
 YR: 4 @ 106

A set of full brothers to Lot 1 that display a tremendous set of credentials. Their foundation dam, Majesty 5A61, was a product of the premier F0203/Rito Excel 809 cross leaving big bodied, broody cows that were powerful and performance oriented. This intriguing cross is sure to create some of the finest females in the industry.

TOP CALIBER EMULATION HERDSIRE PROSPECT!



5



SINCLAIR EXQUISITE 9X17

REG: 19602966 | DOB: 01/25/19 | TATTOO: 9X17

Emulation N Bar 5522#
N Bar Emulation EXT# 10776479
 N Bar Primrose 2424



N Bar Shadow X4124
N Bar Enchantress WP F3619 13310765
 N Bar Enchantress A1376

Emulation 31#
 Ankony 8F78 Lass 8F275
 Emulation 31#
 Primrose N Bar 9962
 N Bar Emulation EXT#
 N Bar Enchantress 4908#
 N Bar Commitment
 N Bar Enchantress U131

Dam's
 Production
 WR: 8 @ 102
 YR: 7 @ 100

Individual Performance					EPD's				
BW	ADJ. WW	WR	ADJ. YW	YR	CED	BW	WW	MILK	YW
ET	690	100	1109	100	5	.2	31	23	48
Individual Performance				Mat	\$ Values				
ADG	Act. IMF	REA/100 lbs		SEN	\$M	\$W	\$F	\$G	\$B
2.60	5.58	1.18		12	43	35	46	22	69



Dam to Lot 5 | N Bar Enchantress WP F3619 (J380)

Retaining ½ semen interest. Selling full possession. Sinclair will have this bull collected following the sale before delivery. The only son of the legendary mating of EXT to the J380 cow, who is one of the most powerful Shadow daughters ever. Big time actual performance and long as a freight train, Sinclair has big plans for this sire in the future of the program and will sample him heavily this spring.

INTRIGUING HERDSIRE FROM THE EXT/ KINOCENTRY BEAUTY CROSS!



SINCLAIR EXQUISITE 9X6

REG: 19477703 | DOB: 02/25/19 | TATTOO: 9X6

Emulation N Bar 5522#
N Bar Emulation EXT# 10776479
 N Bar Primrose 2424

N Bar Prime Time D806#
Sinclair K Bty 9P31 V149# 16361083
 N Bar Kinochtry Beauty 4317#

Emulation 31#
 Ankony 8F78 Lass 8F275
 Emulation 31#
 Primrose N Bar 9962
 Gardens Prime Time#
 N Bar Miss Emulous A404
 Leachman Bold Driver#
 N Bar Kinochtry Beauty 2414

Dam's
 Production
 WR: 9 @ 107
 YR: 8 @ 107

Individual Performance					EPD's				
BW	ADJ. WW	WR	ADJ. YW	YR	CED	BW	WW	MILK	YW
87	708	122	1226	111	1	1.9	47	27	82
Individual Performance				Mat	\$ Values				
ADG	Act. IMF	REA/100 lbs		\$EN	\$M	\$W	\$F	\$G	\$B
3.37	4.91	.98		-1	45	50	66	31	97

9P31 raised 5FE21, a \$16,000 son in 2016, selling to Blackrose Angus in NE.



Dam to Lot 6 | Sinclair K Bty 9P31 V149

Top Herdsire Prospect. An outstanding son of the signature 9P31 cow that has earned donor status the hard way. She's still a very impressive female at 11 years of age. 9X6 is bred much like many of the great sons and daughters of his grandam, V149, who was one of the elite performance cows at the N Bar!



N Bar Kinochtry Beauty 4317 (V149) grandam





7 SINCLAIR EXQUISITE 9X8
 REG: 19475176 | DOB: 03/01/19 | TATTOO: 9X8

Emulation N Bar 5522#
N Bar Emulation EXT# 10776479
 N Bar Primrose 2424

R R Rito 707#
Sinclair Lady OR109 03S3 16715219
 Sinclair Lady 03S3 4465

Emulation 31#
 Ankony 8F78 Lass 8F275
 Emulation 31#
 Primrose N Bar 9962
 Rito N Bar
 Eriskay of Rollin Rock 3
 N Bar Shadow X4124
 Ideal 4465 of 6807 4286

Dam's
 Production
 WR: 8 @ 104
 YR: 7 @ 101

Individual Performance						EPD's			
BW	ADJ. WW	WR	ADJ. YW	YR	CED	BW	WW	MILK	YW
101	691	117	1113	109	-6	4.1	48	19	78
Individual Performance				Mat	\$ Values				
ADG	Act. IMF	REA/100 lbs		\$EN	\$M	\$W	\$F	\$G	\$B
2.75	3.96	1.01		5	38	36	64	14	78

9X8 is a maternal brother to Sinclair Exactly 4U2, who was the 2nd high selling bull of the 2015 sale to Risse UV Ranch, SD.



Dam to Lot 7 | Sinclair Lady OR109 03S3



Dam to Lot 8 | SCC Enchantress 3F2 X412 is a maternal sister to N Bar Shadow X4124.

8 SINCLAIR EXQUISITE 9X18
 REG: 19602909 | DOB: 03/01/19 | TATTOO: 9X18

Emulation N Bar 5522#
N Bar Emulation EXT# 10776479
 N Bar Primrose 2424

EMBRYO TRANSFER
 Emulation N Bar 5522#
SCC Enchantress 3F2 X412 14388184
 N Bar Enchantress 4908#

Emulation 31#
 Ankony 8F78 Lass 8F275
 Emulation 31#
 Primrose N Bar 9962
 Emulation 31#
 Ankony 8F78 Lass 8F275
 Basin Emulation 5953
 Coffey Enchantress 424

Dam's
 Production
 WR: 5 @ 104
 YR: 5 @ 101

Individual Performance						EPD's			
BW	ADJ. WW	WR	ADJ. YW	YR	CED	BW	WW	MILK	YW
ET	620	100	1126	100	3	.4	27	21	46
Individual Performance				Mat	\$ Values				
ADG	Act. IMF	REA/100 lbs		\$EN	\$M	\$W	\$F	\$G	\$B
3.12	5.06	1.18		13	40	26	38	18	56

Reference Sire | Sinclair Emulation XXP
 Sires phenomenal length of spine, extremely feminine and functional females. Progeny display excellent dispositions.



ELITE XXP HERDSIRE PROSPECT



SINCLAIR X- PLUS 9XX3

REG: 19475187 | DOB: 02/14/19 | TATTOO: 9XX3

N Bar Emulation EXT#
Sinclair Emulation XXP 15355048
 N Bar Primrose Y3051#

Sinclair Timeless 8BA4#
Sinclair K Bty 2X7 6MB8 # 17199714
 Sinclair K Bty 6MB8 B345

Emulation N Bar 5522#
 N Bar Primrose 2424
 N Bar Emulation EXT#
 N Bar Primrose 2429#
 Sinclair IN Time 6BT39
 Sinclair Blackbird 2P8 7079#
 N Bar Musketeer 2M13
 N Bar Kinochtry Bty B345

Dam's
 Production
 WR: 6 @ 109
 YR: 6 @ 108

Individual Performance					EPD's				
BW	ADJ. WW	WR	ADJ. YW	YR	CED	BW	WW	MILK	YW
82	628	111	1170	116	5	-2	46	26	93
Individual Performance					\$ Values				
ADG	Act. IMF	REA/100 lbs	Mat	\$EN	\$M	\$W	\$F	\$G	\$B
3.58	7.08	.98	-16	37	46	75	41	116	

Excellent birth to yearling spread. Tremendous IMF scan. Maternal brother to 6SV16, the 2017 high selling bull for \$28,000, bull going to Risse Half Box Ranch, SD. His dam has an excellent production record.



Selling seven ¾ brothers by the signature XXP/Timeless cross. Sinclair Timeless 8BA4's daughters are surfacing in the Sinclair herd as top production cows that milk well and raise big, heavy calves while keeping birth weights in check.

"TIMELESS" XXP 3/4 BROTHERS!



SINCLAIR X- PLUS 9XX12

REG: 19475195 | DOB: 02/20/19 | TATTOO: 9XX12

N Bar Emulation EXT#
Sinclair Emulation XXP 15355048
N Bar Primrose Y3051#

Emulation N Bar 5522#
N Bar Primrose 2424
N Bar Emulation EXT#
N Bar Primrose 2429#
Sinclair IN Time 6BT39
Sinclair Blackbird 2P8 7079#
Sinclair Entrepreneur 8R101
Sinclair Primrose 7FF4 A14

Dam's
Production
WR: 3 @ 108
YR: 1 @ 112

Sinclair Timeless 8BA4#
Sinclair Primrose 5TL32 3RC1# 18154081
Sinclair Primrose 3RC1 7FF4

Individual Performance					EPD's				
BW	ADJ. WW	WR	ADJ. YW	YR	CED	BW	WW	MILK	YW
84	702	124	1196	112	3	.7	55	21	99
Individual Performance					\$ Values				
ADG	Act. IMF	REA/100 lbs	\$EN	\$M	\$W	\$F	\$G	\$B	
3.09	6.09	.98	-13	52	49	73	36	109	

The highest weaning ratio bull in the calf crop. This exciting XXP bull is at the top of his class and defines the word performance!



10



11



SINCLAIR X- PLUS 9XX9

REG: 19475189 | DOB: 02/18/19 | TATTOO: 9XX9

N Bar Emulation EXT#
Sinclair Emulation XXP 15355048
N Bar Primrose Y3051#

Emulation N Bar 5522#
N Bar Primrose 2424
N Bar Emulation EXT#
N Bar Primrose 2429#
Sinclair IN Time 6BT39
Sinclair Blackbird 2P8 7079#
Sinclair XX 8X28
Sinclair Ms Emulous 8SV16

Dam's
Production
WR: 5 @ 108
YR: 3 @ 113

Sinclair Timeless 8BA4#
Sinclair Ms Emulous 3TL26 17536551
Sinclair Ms Emulous 1TX2

Individual Performance					EPD's				
BW	ADJ. WW	WR	ADJ. YW	YR	CED	BW	WW	MILK	YW
94	658	116	1172	116	0	2.2	52	23	101
Individual Performance					\$ Values				
ADG	Act. IMF	REA/100 lbs	\$EN	\$M	\$W	\$F	\$G	\$B	
3.39	5.19	1.10	-14	53	42	89	41	130	



SINCLAIR X- PLUS 9XX8

REG: 19475188 | DOB: 02/17/19 | TATTOO: 9XX8

N Bar Emulation EXT#
Sinclair Emulation XXP 15355048
N Bar Primrose Y3051#

Emulation N Bar 5522#
N Bar Primrose 2424
N Bar Emulation EXT#
N Bar Primrose 2429#
Sinclair IN Time 6BT39
Sinclair Blackbird 2P8 7079#
Sinclair Grass Master#
Sinclair Enchantress 6PV33

Dam's
Production
WR: 5 @ 101
YR: 4 @ 102

Sinclair Timeless 8BA4#
Sinclair Enchantress 3TL19 17523723
Sinclair Enchantress 1G6

Individual Performance					EPD's				
BW	ADJ. WW	WR	ADJ. YW	YR	CED	BW	WW	MILK	YW
67	623	110	1167	115	11	-2.6	45	22	90
Individual Performance					\$ Values				
ADG	Act. IMF	REA/100 lbs	\$EN	\$M	\$W	\$F	\$G	\$B	
3.58	4.95	1.01	-11	54	43	67	28	96	



SINCLAIR X- PLUS 9XX2

REG: 19475193 | DOB: 02/13/19 | TATTOO: 9XX2

N Bar Emulation EXT#
Sinclair Emulation XXP 15355048
N Bar Primrose Y3051#

Emulation N Bar 5522#
N Bar Primrose 2424
N Bar Emulation EXT#
N Bar Primrose 2429#
Sinclair IN Time 6BT39
Sinclair Blackbird 2P8 7079#
N Bar Emulation Ext A1747
N Bar Primrose A14C910

Dam's
Production
WR: 5 @ 97
YR: 5 @ 96

Sinclair Timeless 8BA4#
Sinclair Primrose 3TL64 1V2 17536565
Sinclair Primrose 1V2 145K

Individual Performance					EPD's				
BW	ADJ. WW	WR	ADJ. YW	YR	CED	BW	WW	MILK	YW
75	615	109	1117	111	8	-1.4	43	21	81
Individual Performance					\$ Values				
ADG	Act. IMF	REA/100 lbs	\$EN	\$M	\$W	\$F	\$G	\$B	
3.31	6.00	1.06	-2	42	40	66	38	103	



SINCLAIR X-PLUS 9XX4

REG: 19475196 | DOB: 02/14/19 | TATTOO: 9XX4

N Bar Emulation EXT#
Sinclair Emulation XXP 15355048
N Bar Primrose Y3051#

Emulation N Bar 5522#
N Bar Primrose 2424
N Bar Emulation EXT#
N Bar Primrose 2429#
Sinclair IN Time 6BT39
Sinclair Blackbird 2P8 7079#
Sinclair Grass Master#
Sinclair Blacky 6P18 J126

Dam's
Production
WR: 3 @ 106
YR: 3 @ 104

Sinclair Timeless 8BA4#
Sinclair Blacky 5TL18 3G18# 18154068
Sinclair Blacky 3G18 6P18

Individual Performance					EPD's				
BW	ADJ. WW	WR	ADJ. YW	YR	CED	BW	WW	MILK	YW
81	570	101	1140	113	5	.1	44	22	91
Individual Performance					\$ Values				
ADG	Act. IMF	REA/100 lbs	\$EN	\$M	\$W	\$F	\$G	\$B	
3.75	5.86	.93	-8	51	37	74	41	116	



SINCLAIR X- PLUS 9XX19

REG: 19475192 | DOB: 02/14/19 | TATTOO: 9XX19

N Bar Emulation EXT#
Sinclair Emulation XXP 15355048
N Bar Primrose Y3051#

Emulation N Bar 5522#
N Bar Primrose 2424
N Bar Emulation EXT#
N Bar Primrose 2429#
Sinclair IN Time 6BT39
Sinclair Blackbird 2P8 7079#
Emulation 31#
Sinclair K Bty 9J15 7F20

Dam's
Production
WR: 3 @ 107
YR: 3 @ 107

Sinclair Timeless 8BA4#
Sinclair K Bty 3TL51 1A15 17523716
Sinclair K Bty 1A15 9J15

Individual Performance					EPD's				
BW	ADJ. WW	WR	ADJ. YW	YR	CED	BW	WW	MILK	YW
89	591	104	1079	106	3	.6	40	22	78
Individual Performance					\$ Values				
ADG	Act. IMF	REA/100 lbs	\$EN	\$M	\$W	\$F	\$G	\$B	
3.22	5.49	1.01	0	56	34	61	29	90	



SINCLAIR X- PLUS 9XX6

REG: 19475185 | DOB: 02/15/19 | TATTOO: 9XX6

N Bar Emulation EXT#
Sinclair Emulation XXP 15355048
N Bar Primrose Y3051#

Sinclair Timeless 8BA4#
Sinclair Donna 2SX2 ORW14 # 17187062
Sinclair Donna ORW14 7RD18

Emulation N Bar 5522#
N Bar Primrose 2424
N Bar Emulation EXT#
N Bar Primrose 2429#
Sinclair IN Time 6BT39
Sinclair Blackbird 2P8 7079#
Sinclair Wajima 6R110
Sinclair Donna 7RD18 5XB5

Dam's
Production
WR: 6 @ 105
YR: 4 @ 108

Individual Performance					EPD's				
BW	ADJ. WW	WR	ADJ. YW	YR	CED	BW	WW	MILK	YW
77	562	99	1104	109	7	-5	43	22	85
Individual Performance				Mat	\$ Values				
ADG	Act. IMF	REA/100 lbs	SEN	\$M	\$W	\$F	\$G	\$B	
3.58	4.97	1.12	-6	54	38	74	34	108	



Grandam to Lot 17 | Sinclair Eriskay 2N11 7883



17



SINCLAIR X- PLUS 9XX15

REG: 19475198 | DOB: 02/21/19 | TATTOO: 9XX15

N Bar Emulation EXT#
Sinclair Emulation XXP 15355048
N Bar Primrose Y3051#

N Bar Explosion#
Sinclair Eriskay 5E3 2N11 # 14969376
Sinclair Eriskay 2N11 7883

Emulation N Bar 5522#
N Bar Primrose 2424
N Bar Emulation EXT#
N Bar Primrose 2429#
N Bar Emulation EXT#
N Bar Kinochtry Beauty 4288
D H D Traveler 6807#
Papa Eriskay 7883

Dam's
Production
WR: 11 @ 112
YR: 10 @ 107

Individual Performance					EPD's				
BW	ADJ. WW	WR	ADJ. YW	YR	CED	BW	WW	MILK	YW
80	679	115	1188	117	1	1.2	47	25	91
Individual Performance				Mat	\$ Values				
ADG	Act. IMF	REA/100 lbs	SEN	\$M	\$W	\$F	\$G	\$B	
3.31	5.18	1.03	-13	36	45	71	37	109	

Top performance prospect by the top ratioing aged cow 5E3, who is becoming an elite foundation female in the donor program. 5E3 is also the dam of 4RP15, the \$19,000 third high selling bull in 2015 to Robert Fortune Belvidere, SD.

To better serve our customers, we are making every effort to provide our customer's cattle with better sale marketing exposure.

Let one of the Sinclair Team Representatives know when you are ready to market your cattle and we will try our best to assist you in achieving the top dollar possible to add value to your bottom line.

Fred Saunders is an experienced livestock marketing professional that strives to help earn top dollar for your cattle. He is a friend of the Sinclair program and has been through the offering. Please call him if he can help you successfully market your cattle.



Your personal representative for Northern Livestock Video Auction



Heart S Livestock Marketing, LLC
Licensed and Bonded

Contact Me for all your Marketing Needs!

Fred Saunders

4149 Elk Creek Rd - PO Box 117
Grass Range, MT 59032

406-788-9331 | fredsaunders9@gmail.com

Enhancing your marketing options the personal and professional way.





SINCLAIR X- PLUS 9XX11

REG: 19475202 | DOB: 02/19/19 | TATTOO: 9XX11

N Bar Emulation EXT#
Sinclair Emulation XXP 15355048
N Bar Primrose Y3051#

N Bar Emulation Ext A1747
Sinclair Donna 6V1 2P33 15380807
Sinclair Donna 2P33 B715

Emulation N Bar 5522#
N Bar Primrose 2424
N Bar Emulation EXT#
N Bar Primrose 2429#
N Bar Emulation EXT#
N Bar Clova Pride U3031
N Bar Prime Time D806#
Brooks Donna 715

Dam's
Production
WR: 10 @ 102
YR: 8 @ 105

Individual Performance					EPD's				
BW	ADJ. WW	WR	ADJ. YW	YR	CED	BW	WW	MILK	YW
89	597	103	1178	107	0	2.6	54	19	102
Individual Performance					\$ Values				
ADG	Act. IMF	REA/100 lbs	SEN	\$M	\$W	\$F	\$G	\$B	
3.78	5.93	1.16	-7	46	41	73	50	123	

9XX11 is a standout XXP son that has herdsire credentials. He posts excellent gains and very high IMF and REA scores. 9XX11 is out of a time-tested, 14 yr old, outstanding A1747 dam. She is picture perfect and remains an income source at 14 years of age. Sinclair Donna 6V12 P33 has earned her way into the donor pen this spring. The future will be bright for her progeny in upcoming years.



18

2020

PRODUCTION SALE | MARCH 28

• STAYING TRUE TO THE LEGACY •



Dam to Lot 18 | Sinclair Donna 6V1 2P33



SINCLAIR X- PLUS 9XX5

REG: 19475201 | DOB: 02/14/19 | TATTOO: 9XX5

N Bar Emulation EXT#
Sinclair Emulation XXP 15355048
N Bar Primrose Y3051#

N Bar Emulation Ext A1747
Sinclair Lady Ida 7V19 04F3 15601550
Sinclair Lady Ida 04F3 B154

Emulation N Bar 5522#
N Bar Primrose 2424
N Bar Emulation EXT#
N Bar Primrose 2429#
N Bar Emulation EXT#
N Bar Clova Pride U3031
Emulation N Bar 5522#
N Bar Lady Ida X2912

Dam's
Production
WR: 11 @ 102
YR: 10 @ 105

Individual Performance					EPD's				
BW	ADJ. WW	WR	ADJ. YW	YR	CED	BW	WW	MILK	YW
87	640	108	1075	106	4	.2	46	22	80
Individual Performance					\$ Values				
ADG	Act. IMF	REA/100 lbs	SEN	\$M	\$W	\$F	\$G	\$B	
2.84	5.55	1.02	0	50	46	57	39	96	

Maternal greatness by the Lady Ida X2912 cow family. His dam 7V19 is a true breed treasure that is one of EXT A1747's very top daughters in existence. 9XX5 is a maternal brother to Plains Boss 5B02.



19



Granddam to Lot 19 | Lady Ida X2912



Dam to Lot 19 | Sinclair Lady Ida 7V19 04F3



20

20 SINCLAIR EXECUTIVE 9U7
 REG: 19619409 | DOB: 01/25/19 | TATTOO: 9U7

N Bar Emulation Ext V722
Sinclair Executive 9XV2 16365949
 N Bar Primrose Y3051#
 Embryo Transfer
 Leachman Right Time#
Sinclair Enchantress 5RT1 # 14969726
 N Bar Enchantress 4908#

N Bar Emulation EXT#
 N Bar Blackbird 4307#
 N Bar Emulation EXT#
 N Bar Primrose 2429#
 N Bar Emulation EXT#
 Leachman Erica 0025
 Basin Emulation 5953
 Coffey Enchantress 424

Dam's
 Production
 WR: 7 @ 104
 YR: 5 @ 102

Individual Performance						EPD's			
BW	ADJ. WW	WR	ADJ. YW	YR	CED	BW	WW	MILK	YW
ET	693	100	1248	100	4	.4	33	21	60
Individual Performance						\$ Values			
ADG	Act. IMF	REA/100 lbs	Mat	SEN	\$M	\$W	\$F	\$G	\$B
3.42	5.47	1.06	3	37	30	43	25	68	

Maternal brother to the rare and valuable herdsire Sinclair X-Plus 8XX3. Look out for his exciting sale features in the 2021 sale offering. The Dam 5RT1 is a maternal sister to N Bar Shadow.



Sire to Lot 20 | Sinclair Executive 9XV2



Dam to Lot 20 | Sinclair Enchantress 5RT1

21 SINCLAIR EXPRESS 9V2
 REG: 19472525 | DOB: 02/18/19 | TATTOO: 9V2

N Bar Emulation EXT#
N Bar Emulation Ext A1747 12811512
 N Bar Clova Pride U3031
 Sinclair Grass Master#
Sinclair Primrose 1G5 8P3 16850928
 Sinclair Primrose 8P3 E002

Emulation N Bar 5522#
 N Bar Primrose 2424
 N Bar Trademark 1949
 N Bar Clova Pride 7356
 BT Right Time 24J#
 N Bar Primrose Y3051#
 N Bar Prime Time D806#
 N Bar Primrose 1985B

Dam's
 Production
 WR: 7 @ 99
 YR: 5 @ 100

Individual Performance						EPD's			
BW	ADJ. WW	WR	ADJ. YW	YR	CED	BW	WW	MILK	YW
65	625	110	1091	108	9	-1.4	45	22	72
Individual Performance						\$ Values			
ADG	Act. IMF	REA/100 lbs	Mat	SEN	\$M	\$W	\$F	\$G	\$B
3.07	6.65	1.13	3	62	48	59	47	106	



Sire to Lot 21 & 22 | N Bar Emulation Ext A1747
 Owned with Mountain Valley Angus, VA. A1747 is a highly proven son of EXT that is known for growth and performance while building daughters that are very long bodied, beautiful uddered and are highly fertile. They milk well and have a brilliant foot structure with tremendous depth of heel. Mature A1747 daughters are a sight to behold.

22 SINCLAIR EXPRESS 9V11
 REG: 19602922 | DOB: 03/07/19 | TATTOO: 9V11

N Bar Emulation EXT#
N Bar Emulation Ext A1747 12811512
 N Bar Clova Pride U3031
 Sinclair Shadow Rider 9S34
Sinclair C Pride 4SR10 2P10 17798934
 Sinclair C Pride 2P10 J355

Emulation N Bar 5522#
 N Bar Primrose 2424
 N Bar Trademark 1949
 N Bar Clova Pride 7356
 N Bar Shadow X4124
 N Bar Primrose Y3051#
 N Bar Prime Time D806#
 N Bar Clova Pride F2839#

Dam's
 Production
 WR: 3 @ 103
 YR: 1 @ 100

Individual Performance						EPD's			
BW	ADJ. WW	WR	ADJ. YW	YR	CED	BW	WW	MILK	YW
106	608	107	1091	100	-8	4.5	44	21	72
Individual Performance						\$ Values			
ADG	Act. IMF	REA/100 lbs	Mat	SEN	\$M	\$W	\$F	\$G	\$B
2.98	5.11	1.15	10	56	30	67	37	104	



THE VERY BEST OF 4U2 GENETICS!



23



SINCLAIR BLACK IRON 9UR7

REG: 19475072 | DOB: 02/19/19 | TATTOO: 9UR7

Sinclair Executive 9XV2
Sinclair Exactly 4U2 17798845
 Sinclair Lady 0R109 03S3

Basin Rainmaker 914A
Sinclair K Bty 30012 OXM2 17522150
 Sinclair K Bty OXM2 3J3

N Bar Emulation Ext V722
 N Bar Primrose Y3051#
 R R Rito 707#
 Sinclair Lady 03S3 4465
 Basin Rainmaker 654X#
 Basin Blackbird 584Y#
 Sinclair Multi-X
 Sinclair K Bty 3J3 H426

Dam's
 Production
 WR: 4 @ 116
 YR: 3 @ 114

Individual Performance					EPD's				
BW	ADJ. WW	WR	ADJ. YW	YR	CED	BW	WW	MILK	YW
94	680	120	1126	111	-3	2.5	46	24	79
Individual Performance				Mat	\$ Values				
ADG	Act. IMF	REA/100 lbs		SEN	\$M	\$W	\$F	\$G	\$B
2.94	4.16	1.05		-6	53	41	70	16	86

Tremendous quality, muscle and performance in this outstanding herdsire prospect. His dam is a proven top ratiating Rainmaker 914A daughter that is packed full of maternal goodness. 9UR7 will be at the top of your list after evaluating him sale day.

Reference Sire to Lots 23 - 31 | Sinclair Exactly 4U2

Owned with Risse UV Ranch. 4U2 was the \$18,000, 2nd high selling bull in 2015. He is a proven sire of unparalleled muscling, body volume and stoutness with a tremendous amount of base width. His sons are structurally correct and have exceptional foot quality. His daughters are moderate framed, easy fleshing females that will hold up in rough country and stay in the herd a long time.

PREMIER ERISKAY 2N1 GENETICS!



Kate Roberts

24



SINCLAIR BLACK IRON 9UR5

REG: 19475080 | DOB: 02/14/19 | TATTOO: 9UR5

Sinclair Executive 9XV2
Sinclair Exactly 4U2 17798945
Sinclair Lady OR109 03S3

Basin Rainmaker 654X#
Sinclair Eriskay 502 2N1# 18313177
Sinclair Eriskay 2N1 7883#

N Bar Emulation Ext V722
N Bar Primrose Y3051#
R R Rito 707#
Sinclair Lady 03S3 4465
Basin Rainmaker D S 380U#
Basin Bardolene 423U
D H D Traveler 6807#
Papa Eriskay 7883

Dam's
Production
WR: 3 @ 115
YR: 3 @ 114

Individual Performance					EPD's				
BW	ADJ. WW	WR	ADJ. YW	YR	CED	BW	WW	MILK	YW
81	664	117	1173	116	5	.1	47	25	86
Individual Performance					\$ Values				
ADG	Act. IMF	REA/100 lbs	\$EN	\$M	\$W	\$F	\$G	\$B	
3.36	6.04	1.00	-13	41	47	66	26	92	



Grandam to Lot 24 | Sinclair Eriskay 2N1 7883



Maternal Grand sire to Lot 24 | Basin Rainmaker 654X

Big-Time Herdsire Prospect! Powerful performance in a bull that demands the attention of top cowmen. 9UR5 is full of thickness and muscle, is very correct and athletic on the stride. He has near ideal testicle development. Rare 654X/2N1 genetics combined with Rito 707 and Traveler 6807. Tons of potential in this breed changer! The dam 502 is one of the premier performance and maternal cows in the Sinclair herd.

POWERHOUSE HERD BULL PROSPECT!



25



SINCLAIR BLACK IRON 9UR10

REG: 19475085 | DOB: 02/24/19 | TATTOO: 9UR10

Sinclair Executive 9XV2
Sinclair Exactly 4U2 17798945
Sinclair Lady OR109 03S3

N Bar Emulation EXT#
Sinclair C Pride 7X34 K325# 15638138
N Bar Clova Pride F1100

N Bar Emulation Ext V722
N Bar Primrose Y3051#
R R Rito 707#
Sinclair Lady 03S3 4465
Emulation N Bar 5522#
N Bar Primrose 2424
N Bar Ballot Z104 Y2837
N Bar Clova Pride D1356#

Dam's
Production
WR: 10 @ 107
YR: 8 @ 106

Individual Performance					EPD's				
BW	ADJ. WW	WR	ADJ. YW	YR	CED	BW	WW	MILK	YW
84	685	116	1151	113	0	1.6	50	21	86
Individual Performance				Mat	\$ Values				
ADG	Act. IMF	REA/100 lbs		\$EN	\$M	\$W	\$F	\$G	\$B
3.03	3.86	1.10		-10	39	45	65	18	82

9UR10 is the result of a carefully planned mating resulting in powerful performance and maternal traits. His proven dam 7X34, is a herd favorite that has earned donor status this fall. She has several top descendants in the herd. This standout herdsire prospect is long bodied and thick ended. He will rise to the top of the progressive ranchers list sale day.



Dam to Lot 25 | Sinclair C Pride 7X34 K325

POWERFUL SONS OF SINCLAIR EXACTLY 4U2



26 SINCLAIR BLACK IRON 9UR21
REG: 19475070 | DOB: 02/22/19 | TATTOO: 9UR21

Sinclair Executive 9XV2
Sinclair Exactly 4U2 17798945
Sinclair Lady 0R109 03S3

Basin Rainmaker 914A
Sinclair Miss Wix 3003 9XX4 17483239
Sinclair Ms Wix 9XX4 3S17

N Bar Emulation Ext V722
N Bar Primrose Y3051#
R R Rito 707#
Sinclair Lady 03S3 4465
Dam's
Production
WR: 4 @ 108
YR: 3 @ 107

Individual Performance					EPD's				
BW	ADJ. WW	WR	ADJ. YW	YR	CED	BW	WW	MILK	YW
86	581	103	1175	110	-1	1.6	50	20	91
Individual Performance					\$ Values				
ADG	Act. IMF	REA/100 lbs	SEN	\$M	\$W	\$F	\$G	\$B	
3.71	4.50	1.11	-10	52	41	69	18	87	



29 SINCLAIR BLACK IRON 9UR22
REG: 19477685 | DOB: 02/26/19 | TATTOO: 9UR22

Sinclair Executive 9XV2
Sinclair Exactly 4U2 17798945
Sinclair Lady 0R109 03S3

N Bar Emulation 5522 4245A
Sinclair Lady 4FC3 2TL3 17746195
Sinclair Lady 2TL3 0X4

N Bar Emulation Ext V722
N Bar Primrose Y3051#
R R Rito 707#
Sinclair Lady 03S3 4465
Dam's
Production
WR: 3 @ 102
YR: 2 @ 100

Individual Performance					EPD's				
BW	ADJ. WW	WR	ADJ. YW	YR	CED	BW	WW	MILK	YW
68	544	99	1022	98	5	-1.6	36	20	63
Individual Performance					\$ Values				
ADG	Act. IMF	REA/100 lbs	SEN	\$M	\$W	\$F	\$G	\$B	
3.15	5.06	1.20	0	52	34	40	18	58	



27 SINCLAIR BLACK IRON 9UR8
REG: 19475086 | DOB: 02/19/19 | TATTOO: 9UR8

Sinclair Executive 9XV2
Sinclair Exactly 4U2 17798945
Sinclair Lady 0R109 03S3

N Bar Emulation EXT#
Sinclair Blkbird 7X45 2P8 15644236
Sinclair Blackbird 2P8 7079#

N Bar Emulation Ext V722
N Bar Primrose Y3051#
R R Rito 707#
Sinclair Lady 03S3 4465
Dam's
Production
WR: 10 @ 101
YR: 7 @ 103

Individual Performance					EPD's				
BW	ADJ. WW	WR	ADJ. YW	YR	CED	BW	WW	MILK	YW
90	629	107	1114	110	-2	2.7	49	18	90
Individual Performance					\$ Values				
ADG	Act. IMF	REA/100 lbs	SEN	\$M	\$W	\$F	\$G	\$B	
3.15	4.10	1.01	-7	36	34	62	14	76	



30 SINCLAIR BLACK IRON 9UR31
REG: 19669664 | DOB: 03/10/19 | TATTOO: 9UR31

Sinclair Executive 9XV2
Sinclair Exactly 4U2 17798945
Sinclair Lady 0R109 03S3

Sinclair Emulation XXP
Sinclair Eriskay 2X7 7V74 17197416
Sinclair Eriskay 7V74 707

N Bar Emulation Ext V722
N Bar Primrose Y3051#
R R Rito 707#
Sinclair Lady 03S3 4465
Dam's
Production
WR: 5 @ 102
YR: 4 @ 102

Individual Performance					EPD's				
BW	ADJ. WW	WR	ADJ. YW	YR	CED	BW	WW	MILK	YW
78	655	103	1089	100	5	.1	46	18	75
Individual Performance					\$ Values				
ADG	Act. IMF	REA/100 lbs	SEN	\$M	\$W	\$F	\$G	\$B	
2.47	2.80	1.30	0	47	42	55	18	73	



Grandam to Lot 27 | Sinclair Blackbird 2P8 7079



31 SINCLAIR BLACK IRON 9UR4
REG: 19475082 | DOB: 02/11/19 | TATTOO: 9UR4

Sinclair Executive 9XV2
Sinclair Exactly 4U2 17798945
Sinclair Lady 0R109 03S3

Gardens Transition 7205 S1
Sinclair Lady 7GT7 2A17 18829780
Sinclair Lady 2A17 3R1

N Bar Emulation Ext V722
N Bar Primrose Y3051#
R R Rito 707#
Sinclair Lady 03S3 4465
Dam's
Production
WR: 1 @ 113
YR: 1 @ 104

Individual Performance					EPD's				
BW	ADJ. WW	WR	ADJ. YW	YR	CED	BW	WW	MILK	YW
86	639	113	1050	104	-1	2.6	43	16	70
Individual Performance					\$ Values				
ADG	Act. IMF	REA/100 lbs	SEN	\$M	\$W	\$F	\$G	\$B	
2.71	4.70	1.38	7	60	29	48	23	70	



28 SINCLAIR BLACK IRON 9UR9
REG: 19475079 | DOB: 02/23/19 | TATTOO: 9UR9

Sinclair Executive 9XV2
Sinclair Exactly 4U2 17798945
Sinclair Lady 0R109 03S3

N Bar Emulation 5522 4245A
Sinclair Lady 4FC2 2TL28 17746183
Sinclair Lady 2TL28 9JP22

N Bar Emulation Ext V722
N Bar Primrose Y3051#
R R Rito 707#
Sinclair Lady 03S3 4465
Dam's
Production
WR: 4 @ 110
YR: 3 @ 107

Individual Performance					EPD's				
BW	ADJ. WW	WR	ADJ. YW	YR	CED	BW	WW	MILK	YW
75	577	102	1083	107	6	-1.3	38	23	71
Individual Performance					\$ Values				
ADG	Act. IMF	REA/100 lbs	SEN	\$M	\$W	\$F	\$G	\$B	
3.34	4.78	1.08	-9	49	38	27	5	32	



SINCLAIR
CATTLE COMPANY

SALE DAY DIRECT BID
SINCLAIR REPRESENTATIVE PHONES

Steve Blankley II 240-625-5415
Lance Cline 785-564-1744
Mike Bazzle 540-421-7411
Logan Baker 307-254-1477



DOMINATING PERFORMANCE



SINCLAIR EXECUTIVE 9UF3

REG: 19472545 | DOB: 03/12/19 | TATTOO: 9UF3

Sinclair Exactly 4U2
Sinclair Black Iron 7UR26 19016137
 Sinclair Erica 2FE2 8BT12

N Bar Emulation Ext V722
Sinclair Lady Ida 8XV12 CS2 # 16026999
 N Bar Lady Ida Z1453

Sinclair Executive 9XV2
 Sinclair Lady OR109 03S3
 Sinclair Emulation 5522 XP#
 Sinclair Erica 8BT12 A18

N Bar Emulation EXT#
 N Bar Blackbird 4307#
 N Bar Nighthawk
 N Bar Lady Ida 4360

Dam's
 Production
 WR: 10 @ 111
 YR: 10 @ 107

Individual Performance					EPD's				
BW	ADJ. WW	WR	ADJ. YW	YR	CED	BW	WW	MILK	YW
84	686	116	1155	114	1	1.7	53	25	87
Individual Performance				Mat	\$ Values				
ADG	Act. IMF	REA/100 lbs		\$EN	\$M	\$W	\$F	\$G	\$B
3.05	4.67	1.26		-12	55	54	61	33	95

A phenotypic standout with chartbusting performance ratios by the 8XV12 female. She is one of the top calf raisers in the Sinclair herd who has earned donor status this year from her elite production record. She is also the dam of Sinclair Broker 3RC33, owned by Chapman Cattle Co. AB



Maternal Brother to Lot 32 | Sinclair Broker 3RC33



SINCLAIR EXECUTIVE 9UF4

REG: 19472544 | DOB: 03/15/19 | TATTOO: 9UF4

Sinclair Exactly 4U2
Sinclair Black Iron 7UR26 19016137
 Sinclair Erica 2FE2 8BT12

N Bar Prime Time D806#
Sinclair Lady Ida 7P15 5BT13 15601529
 Sinclair Lady Ida 5BT13

Sinclair Executive 9XV2
 Sinclair Lady OR109 03S3
 Sinclair Emulation 5522 XP#
 Sinclair Erica 8BT12 A18

Gardens Prime Time#
 N Bar Miss Emulous A404
 BT Right Time 24J#
 N Bar Lady Ida C2387

Dam's
 Production
 WR: 8 @ 103
 YR: 7 @ 100

Individual Performance					EPD's				
BW	ADJ. WW	WR	ADJ. YW	YR	CED	BW	WW	MILK	YW
81	684	116	1174	116	4	1.4	53	20	88
Individual Performance				Mat	\$ Values				
ADG	Act. IMF	REA/100 lbs		\$EN	\$M	\$W	\$F	\$G	\$B
3.18	5.35	1.15		-1	61	48	63	42	104



SINCLAIR RITOLATION 9RX6

REG: 19626319 | DOB: 02/14/19 | TATTOO: 9RX6

Sinclair Rito 2R1
Sinclair Rito 4RX7 17830573
 Sinclair Lady Ida 1XX9 3S41

N Bar Emulation Ext A1747
Sinclair Primrose 1V2 145K 16861339
 N Bar Primrose A14C910

Rito Revolve OR5
 N Bar Miss Emulous A404
 Sinclair Emulation XXP
 Sinclair Lady Ida 3S41 J424

N Bar Emulation EXT#
 N Bar Clova Pride U3031
 N Bar Prime Rate C1878
 N Bar Primrose Y3051#

Dam's
 Production
 WR: 7 @ 102
 YR: 6 @ 101

Individual Performance					EPD's				
BW	ADJ. WW	WR	ADJ. YW	YR	CED	BW	WW	MILK	YW
78	635	100	1174	100	2	1.4	45	19	77
Individual Performance				Mat	\$ Values				
ADG	Act. IMF	REA/100 lbs		\$EN	\$M	\$W	\$F	\$G	\$B
3.32	4.25	1.20		4	57	38	60	37	98

Elite Herdsire Prospect with added growth and power!
 We missed getting his picture taken. He will have a lot of friends sale day.

HIGH PERFORMING SONS OF RITO 4RX7



SINCLAIR RITOLATION 9RX3

REG: 19622717 | DOB: 02/04/19 | TATTOO: 9RX3

Sinclair Rito 4RX7¹⁷⁸³⁰⁵⁷³
Sinclair Lady Ida 1XX9 3S41

N Bar Emulation Ext A1747
Sinclair Ms Emulous OV5¹⁶⁶⁴⁹⁰⁶²
Sinclair Ms Emulous 7td11

Rito Revolve OR5
N Bar Miss Emulous A404
Sinclair Emulation XXP
Sinclair Lady Ida 3S41 J424
N Bar Emulation EXT#
N Bar Clova Pride U3031
Vance Top Dawg#
N Bar Miss Emulous A404

Dam's
Production
WR: 8 @ 101
YR: 6 @ 104

Individual Performance					EPD's				
BW	ADJ. WW	WR	ADJ. YW	YR	CED	BW	WW	MILK	YW
80	650	114	1189	108	3	.8	51	18	86
Individual Performance					\$ Values				
ADG	Act. IMF	REA/100 lbs	Mat	SEN	\$M	\$W	\$F	\$G	\$B
3.32	4.30	1.01		-5	67	44	74	33	107



SINCLAIR RITOLATION 9RX17

REG: 19624984 | DOB: 02/17/19 | TATTOO: 9RX17

Sinclair Rito 2R1
Sinclair Rito 4RX7¹⁷⁸³⁰⁵⁷³
Sinclair Lady Ida 1XX9 3S41

Sinclair Net Present Value#
Sinclair Blkcap Mc 3PV2 1LB2¹⁷⁴⁵¹⁸⁸⁷
Sinclair Blkcap Mc 1LB2 7RR4

Rito Revolve OR5
N Bar Miss Emulous A404
Sinclair Emulation XXP
Sinclair Lady Ida 3S41 J424
N Bar Prime Time D806#
Ideal 4465 of 6807 4286
Royal Rito L 2
Sinclair Blkcap Mc 7RR4 1C11

Dam's
Production
WR: 3 @ 110
YR: 3 @ 110

Individual Performance					EPD's				
BW	ADJ. WW	WR	ADJ. YW	YR	CED	BW	WW	MILK	YW
88	711	112	1212	104	3	1.6	51	22	86
Individual Performance					\$ Values				
ADG	Act. IMF	REA/100 lbs	Mat	SEN	\$M	\$W	\$F	\$G	\$B
3.08	5.23	.99		-6	72	47	67	38	105



SINCLAIR RITOLATION 9RX12

REG: 19622718 | DOB: 02/19/19 | TATTOO: 9RX12

Sinclair Rito 2R1
Sinclair Rito 4RX7¹⁷⁸³⁰⁵⁷³
Sinclair Lady Ida 1XX9 3S41

Sinclair Rito Legacy 3R9
Sinclair C Pride 1RL13 J204¹⁶⁹³⁴⁶³⁵
N Bar Clova Pride WP C2009

Rito Revolve OR5
N Bar Miss Emulous A404
Sinclair Emulation XXP
Sinclair Lady Ida 3S41 J424
R R Rito 707#
Ideal 4465 of 6807 4286
N Bar Shadow X4124
N Bar Clova Pride Z1553

Dam's
Production
WR: 5 @ 102
YR: 3 @ 106

Individual Performance					EPD's				
BW	ADJ. WW	WR	ADJ. YW	YR	CED	BW	WW	MILK	YW
84	592	104	1114	102	1	1.7	42	17	71
Individual Performance					\$ Values				
ADG	Act. IMF	REA/100 lbs	Mat	SEN	\$M	\$W	\$F	\$G	\$B
3.22	6.07	1.12		6	53	32	36	32	67



SINCLAIR RITOLATION 9RX18

REG: 19622723 | DOB: 03/08/19 | TATTOO: 9RX18

Sinclair Rito 2R1
Sinclair Rito 4RX7¹⁷⁸³⁰⁵⁷³
Sinclair Lady Ida 1XX9 3S41

N Bar Emulation Ext A1747
Sinclair Edella 3V8 9JP68¹⁷⁴⁶⁹⁸¹⁰
Sinclair Edella 9JP68 7X53

Rito Revolve OR5
N Bar Miss Emulous A404
Sinclair Emulation XXP
Sinclair Lady Ida 3S41 J424
N Bar Emulation EXT#
N Bar Clova Pride U3031
Dunlouse Jipsey Earl E161#
Sinclair Edella 7X53 3S5

Dam's
Production
WR: 4 @ 99
YR: 4 @ 99

Individual Performance					EPD's				
BW	ADJ. WW	WR	ADJ. YW	YR	CED	BW	WW	MILK	YW
100	595	105	1105	101	-6	4.1	47	18	78
Individual Performance					\$ Values				
ADG	Act. IMF	REA/100 lbs	Mat	SEN	\$M	\$W	\$F	\$G	\$B
3.15	6.14	1.08		4	67	30	60	38	99



With utmost gratitude, Sinclair Cattle Company supports our youth in agriculture. We are pleased to donate 100% of the proceeds of this semen offering equally to the Wyoming State 4H Foundation and Wyoming FFA Foundation.

SEMEN DONATION

- Wyoming State 4-H Foundation.
- Wyoming FFA Foundation
- 5 units Emulation 31
- 10 units Sinclair Emulation XXP
- 10 units N Bar Nighthawk
- 10 units Sinclair Plains Boss
- 10 units N Bar Emulation EXT A1747
- 10 units Sinclair Emulation 5522 XP
- 10 units Sinclair Extra 4X13
- 10 units Gardens Prime Time
- 10 units Sinclair Grass Master
- 10 units N Bar Prime Time D806



SINCLAIR RITOLATION 9RX19
REG: 19622721 | DOB: 04/11/19 | TATTOO: 9RX19

Sinclair Rito 2R1
Sinclair Rito 4RX7 17830573
Sinclair Lady Ida 1XX9 3541

Sinclair Boss#
Sinclair K Bty 3B17 9XT05 17483222
Sinclair K Bty 9XT05 7V53

Rito Revolve OR5
N Bar Miss Emulous A404
Sinclair Emulation XXP
Sinclair Lady Ida 3541 J424
Sinclair Grass Master#
Sinclair Lady 6P69 3M18
Sinclair Extra 4X13#
Sinclair K Bty 7V53 H023#

Dam's
Production
WR: 4 @ 102
YR: 3 @ 98

Individual Performance					EPD's					
BW	ADJ. WW	WR	ADJ. YW	YR	CED	BW	WW	MILK	YW	
82	644	113			3	1.6	52	19	90	
Individual Performance					\$ Values					
ADG	Act. IMF	REA/100 lbs	Mat		\$EN	\$M	\$W	\$F	\$G	\$B
2.98	5.63	1.16	-3		70	44	71	35	107	



SINCLAIR BROKER 9RC1
REG: 19472530 | DOB: 02/22/19 | TATTOO: 9RC1

R R Rito 707#
Sinclair Entrepreneur 8R101 16027234
N Bar Kinochtry Beauty Z1925

Sinclair Fortune Son#
Sinclair C Pride 2D1 7XT19 17187063
Sinclair C Pride 7XT19 K811

Rito N Bar
Eriskay of Rollin Rock 3
N Bar Emulation EXT#
N Bar Kinochtry Beauty 4310#
Sinclair Emulate 7XT28
Sinclair Blackbird 2P8 7079#
Sinclair Extra 4X13#
N Bar Clova Pride H1080

Dam's
Production
WR: 6 @ 107
YR: 4 @ 108

Individual Performance					EPD's					
BW	ADJ. WW	WR	ADJ. YW	YR	CED	BW	WW	MILK	YW	
94	607	107	1058	104	-4	3.8	47	17	78	
Individual Performance					\$ Values					
ADG	Act. IMF	REA/100 lbs	Mat		\$EN	\$M	\$W	\$F	\$G	\$B
2.98	6.05	1.16	4		40	30	58	38	96	



CONVENIENCE BUYING
Real -Time Phone Bids
Bill Pelton Sale Day Conference Call
Online Bids
DV Auction & Cattle USA
See inside back cover for details



Reference Sire to Lots 42-45 and grandsire of 46 5B02 was the \$18,000 high seller of the 2016 sale to GBT Angus, Wawota SK Canada. Plains Boss is the result of carefully planned cross between two great Sinclair Lady Ida cows in 70C7 and 7V19. See page 47 for the complete Plains Boss ad.



SINCLAIR BROKER 9RC10
REG: 19602920 | DOB: 03/04/19 | TATTOO: 9RC10

R R Rito 707#
Sinclair Entrepreneur 8R101 16027234
N Bar Kinochtry Beauty Z1925

Sinclair Multi-X
Sinclair K Bty 0XM18 8J8 16657596
Sinclair K Bty 8J8 2G17#

Rito N Bar
Eriskay of Rollin Rock 3
N Bar Emulation EXT#
N Bar Kinochtry Beauty 4310#
Sinclair Extra 4X13#
N Bar GW Eola WP E5499
N Bar Jusrite 4324A#
N Bar Kinochtry Bty SCC 2G17

Dam's
Production
WR: 8 @ 102
YR: 6 @ 102

Individual Performance					EPD's					
BW	ADJ. WW	WR	ADJ. YW	YR	CED	BW	WW	MILK	YW	
92	547	96	1037	95	-1	2.8	33	19	56	
Individual Performance					\$ Values					
ADG	Act. IMF	REA/100 lbs	Mat		\$EN	\$M	\$W	\$F	\$G	\$B
3.01	4.63	1.25	12		51	22	47	26	73	



42



SINCLAIR FOREMAN 9L15
REG: 19475253 | DOB: 02/22/19 | TATTOO: 9L15

Sinclair Patriarch 3B47
Sinclair Plains Boss 5B02 18152044
Sinclair Lady Ida 7V19 04F3

Emulation 31#
Sinclair Enchantress 9A37 16580179
Sinclair Enchantress 7P14

Sinclair Boss#
Sinclair Lady Ida 70C7 2V11
N Bar Emulation Ext A1747
Sinclair Lady Ida 04F3 B154
F C R Elation Lad 652
Miss Emulous 243
N Bar Prime Time D806#
Sinclair Enchantress 5B11

Dam's
Production
WR: 9 @ 100
YR: 8 @ 99

Individual Performance					EPD's					
BW	ADJ. WW	WR	ADJ. YW	YR	CED	BW	WW	MILK	YW	
77	644	109	1159	114	7	-8	47	20	85	
Individual Performance					\$ Values					
ADG	Act. IMF	REA/100 lbs	Mat		\$EN	\$M	\$W	\$F	\$G	\$B
3.36	4.88	1.04	4		46	43	72	39	111	

EXCITING PLAINS BOSS GENETICS



43 SINCLAIR FOREMAN 9L8
REG: 19475251 | DOB: 02/14/19 | TATTOO: 9L8

Sinclair Patriarch 3B47
Sinclair Plains Boss 5B02¹⁸¹⁵²⁰⁴⁴
Sinclair Lady Ida 7V19 04F3

Emulation 31#
Sinclair K Bty 1A5 9R105#¹⁶⁸⁵⁰⁹¹⁵
Sinclair K Bty 9R105 E118

Sinclair Boss#
Sinclair Lady Ida 70C7 2V11
N Bar Emulation Ext A1747
Sinclair Lady Ida 04F3 B154
F C R Elation Lad 652
Miss Emulous 243
R R Rito 707#
N Bar Kinochtry Beauty Z1925

Dam's
Production
WR: 7 @ 105
YR: 7 @ 103

Individual Performance					EPD's				
BW	ADJ. WW	WR	ADJ. YW	YR	CED	BW	WW	MILK	YW
91	613	108	1130	111	1	1.6	43	22	78
Individual Performance				Mat	\$ Values				
ADG	Act. IMF	REA/100 lbs	SEN	\$M	\$W	\$F	\$G	\$B	
3.41	6.58	.93	6	45	40	69	42	111	



44 SINCLAIR FOREMAN 9L9
REG: 19475252 | DOB: 02/15/19 | TATTOO: 9L9

Sinclair Patriarch 3B47
Sinclair Plains Boss 5B02¹⁸¹⁵²⁰⁴⁴
Sinclair Lady Ida 7V19 04F3

Emulation 31#
Sinclair K Bty 1A16 9XT29¹⁶⁹²⁵⁵⁶⁹
Sinclair K Bty 9XT29 11P3

Sinclair Boss#
Sinclair Lady Ida 70C7 2V11
N Bar Emulation Ext A1747
Sinclair Lady Ida 04F3 B154
F C R Elation Lad 652
Miss Emulous 243
Sinclair Extra 4X13#
Sinclair K Bty 11P3 L234

Dam's
Production
WR: 6 @ 99
YR: 4 @ 95

Individual Performance					EPD's				
BW	ADJ. WW	WR	ADJ. YW	YR	CED	BW	WW	MILK	YW
82	556	98	1058	104	5	-1	36	22	68
Individual Performance				Mat	\$ Values				
ADG	Act. IMF	REA/100 lbs	SEN	\$M	\$W	\$F	\$G	\$B	
3.31	5.15	1.06	12	49	33	73	38	111	



45



45 SINCLAIR FOREMAN 9L16
REG: 19475265 | DOB: 02/26/19 | TATTOO: 9L16

Sinclair Patriarch 3B47
Sinclair Plains Boss 5B02¹⁸¹⁵²⁰⁴⁴
Sinclair Lady Ida 7V19 04F3

N Bar Explosion TNT#
Sinclair M Emulous 4ET1 D47#¹⁴⁷⁷³⁹⁸⁸
N Bar Miss Emulous B514

Sinclair Boss#
Sinclair Lady Ida 70C7 2V11
N Bar Emulation Ext A1747
Sinclair Lady Ida 04F3 B154
N Bar Explosion#
N Bar Enchantress U130
N Bar Emulation Extra V129
N Bar Miss Emulous Y3502A

Dam's
Production
WR: 14 @ 107
YR: 13 @ 104

Individual Performance					EPD's				
BW	ADJ. WW	WR	ADJ. YW	YR	CED	BW	WW	MILK	YW
68	590	100	1041	103	9	-2.5	35	23	67
Individual Performance				Mat	\$ Values				
ADG	Act. IMF	REA/100 lbs	SEN	\$M	\$W	\$F	\$G	\$B	
2.93	3.85	1.18	5	46	37	61	32	93	



Dam to Lot 45 | Sinclair M Emulous 4ET1 D47

2020

PRODUCTION SALE | MARCH 28

• STAYING TRUE TO THE LEGACY •



46



46 SINCLAIR FOREMAN 9LX1
REG: 19475357 | DOB: 03/19/19 | TATTOO: 9LX1

Sinclair Plains Boss 5B02
Sinclair Foreman 7L27¹⁸⁸⁴¹⁶⁸⁶
Sinclair Lady 1X63 3M18

Sinclair MT Time 2P77
Sinclair C Pride 9PU4 7X34¹⁶³⁴⁹⁵¹²
Sinclair C Pride 7X34 K325#

Sinclair Patriarch 3B47
Sinclair Lady Ida 7V19 04F3
N Bar Emulation EXT#
Sinclair Lady 3M18 4465#
N Bar Prime Time D806#
N Bar Enchantress 4906
N Bar Emulation EXT#
N Bar Clova Pride F1100

Dam's
Production
WR: 7 @ 111
YR: 7 @ 105

Individual Performance					EPD's				
BW	ADJ. WW	WR	ADJ. YW	YR	CED	BW	WW	MILK	YW
89	666	118	1172	110	1	1.4	49	27	85
Individual Performance				Mat	\$ Values				
ADG	Act. IMF	REA/100 lbs	SEN	\$M	\$W	\$F	\$G	\$B	
3.16	4.37	1.02	-9	53	51	82	32	114	

A high ratioing son of the up and coming herdsire 7L27, which is a heavy muscled, high octane son of Plains Boss 5B02. 9LX1's pedigree is stacked full of top foundation cows, including his grandam, 7X34, who is a favorite EXT daughter in the herd. Expect a bunch of top sons of 7L27 in the future!



TOP OUTCROSS HERDSIRE PROSPECT, THE BEST OF FORTE GENETICS!



SINCLAIR FORTE 9PF2

REG: 19478733 | DOB: 02/19/19 | TATTOO: 9PF2

Papa Optima 9818
Papa Forte 1921# 11620690
Papa Envious Blackbird 8832

Sinclair X-Plus 3XX20
Sinclair K Bty 5PX5 18152665
Sinclair K Bty 2FE1 8J8

Scotch Cap#
Blackbird D H D 2816
Papa Rito T Power D H D 6838
Envious Blackbird of RR 7066

Sinclair Emulation XXP
Sinclair Primrose 5R47 D011
Sinclair Emulation 5522 XP#
Sinclair K Bty 8J8 2G17#

Dam's
Production
WR: 2 @ 104
YR: 1 @ 111

Individual Performance					EPD's				
BW	ADJ. WW	WR	ADJ. YW	YR	CED	BW	WW	MILK	YW
94	621	110	1179	111	4	2.1	37	24	70
Individual Performance				Mat	\$ Values				
ADG	Act. IMF	REA/100 lbs		\$EN	\$M	\$W	\$F	\$G	\$B
3.49	5.44	1.26		9	59	31	54	36	91



SINCLAIR FORTE 9PF3

REG: 19478739 | DOB: 02/23/19 | TATTOO: 9PF3

Papa Optima 9818
Papa Forte 1921# 11620690
Papa Envious Blackbird 8832

Rito Revolve OR5
Sinclair Blkbd 8R41 5P101 16026912
Sinclair Blkbd 5P101 3525

Scotch Cap#
Blackbird D H D 2816
Papa Rito T Power D H D 6838
Envious Blackbird of RR 7066

R R Rito 707#
Ideal 1456 of 8103 8114
N Bar Prime Time D806#
Sinclair Blackbird 3S25 A47

Dam's
Production
WR: 10 @ 103
YR: 8 @ 105

Individual Performance					EPD's				
BW	ADJ. WW	WR	ADJ. YW	YR	CED	BW	WW	MILK	YW
91	626	106	1159	114	3	3.0	37	23	76
Individual Performance				Mat	\$ Values				
ADG	Act. IMF	REA/100 lbs		\$EN	\$M	\$W	\$F	\$G	\$B
3.47	5.80	1.09		6	40	25	54	38	92



SINCLAIR FORTE 9PF7

REG: 19486730 | DOB: 02/25/19 | TATTOO: 9PF7

Papa Optima 9818
Papa Forte 1921# 11620690
Papa Envious Blackbird 8832

Sinclair Emulation XXP
Sinclair Enchantress 4XX56# 17821767
Sinclair Enchantress OR14#

Scotch Cap#
Blackbird D H D 2816
Papa Rito T Power D H D 6838
Envious Blackbird of RR 7066

N Bar Emulation EXT#
N Bar Primrose Y3051#
Rito Revolve OR5
Sinclair Enchantress 22X3

Dam's
Production
WR: 4 @ 107
YR: 3 @ 101

Individual Performance					EPD's				
BW	ADJ. WW	WR	ADJ. YW	YR	CED	BW	WW	MILK	YW
84	575	105	1133	109	4	1.7	39	22	73
Individual Performance				Mat	\$ Values				
ADG	Act. IMF	REA/100 lbs		\$EN	\$M	\$W	\$F	\$G	\$B
3.68	4.95	1.06		8	63	32	59	33	92



Reference Sire to Lot 47-49 | Papa Forte 1921

EXCITING OUTCROSS GENETICS BY PAPA FORTE!

MATERNAL VERIFIED OUTCROSS GENETICS!



SINCLAIR EQUINOX 9EQ4

REG: 19479728 | DOB: 02/18/19 | TATTOO: 9EQ4

Horse Butte 6141 of 3141
Loyning Equinox 7¹⁸⁹⁹⁵⁵²³
Jad Ester 3750

Horse Butte 1116 of 3116
Shoshone Ester 3141
M C C Logan
Shoshone Ester 3128
N Bar Emulation EXT#
N Bar Primrose Y3051#
Emulation 31#
Sinclair Blkbird 8R41 5P101

Dam's
Production
WR: 4 @ 102
YR: 4 @ 105

Sinclair Emulation XXP
Sinclair Blkbird 4XX11 0A15¹⁷⁸⁰²²¹⁰
Sinclair Blkbird 0A15 8R41

Individual Performance					EPD's				
BW	ADJ. WW	WR	ADJ. YW	YR	CED	BW	WW	MILK	YW
74	609	108	1049	104	9	-1.1	41	21	70
Individual Performance					\$ Values				
ADG	Act. IMF	REA/100 lbs	SEN	\$M	\$W	\$F	\$G	\$B	
2.90	4.81	1.13	0	64	40	46	23	69	



50



SINCLAIR EQUINOX 9EQ5

REG: 19479729 | DOB: 02/18/19 | TATTOO: 9EQ5

Horse Butte 6141 of 3141
Loyning Equinox 7¹⁸⁹⁹⁵⁵²³
Jad Ester 3750

Horse Butte 1116 of 3116
Shoshone Ester 3141
M C C Logan
Shoshone Ester 3128
N Bar Emulation EXT#
N Bar Primrose Y3051#
Emulation 31#
Sinclair Enchantress 7P14

Dam's
Production
WR: 4 @ 101
YR: 4 @ 106

Sinclair Emulation XXP
Sinclair Enchantress 4XX8¹⁷⁷⁹⁸⁹³⁹
Sinclair Enchantress 9A37

Individual Performance					EPD's				
BW	ADJ. WW	WR	ADJ. YW	YR	CED	BW	WW	MILK	YW
86	588	104	1124	111	6	.7	44	20	79
Individual Performance					\$ Values				
ADG	Act. IMF	REA/100 lbs	SEN	\$M	\$W	\$F	\$G	\$B	
3.53	5.66	1.03	-4	45	38	53	32	85	



SINCLAIR EQUINOX 9EQ10

REG: 19479721 | DOB: 02/26/19 | TATTOO: 9EQ10

Horse Butte 6141 of 3141
Loyning Equinox 7¹⁸⁹⁹⁵⁵²³
Jad Ester 3750

Horse Butte 1116 of 3116
Shoshone Ester 3141
M C C Logan
Shoshone Ester 3128
Emulation N Bar 5522#
N Bar Kinochtry Bty SCC 2V3#
Sinclair Timeless 8BA4#
Sinclair Lady 0X4 3M19

Dam's
Production
WR: 2 @ 104
YR: 1 @ 97

Sinclair Emulation 0F4
Sinclair Lady 5FX6 2TL3¹⁸¹⁵²⁰³⁶
Sinclair Lady 2TL3 0X4

Individual Performance					EPD's				
BW	ADJ. WW	WR	ADJ. YW	YR	CED	BW	WW	MILK	YW
91	613	108	1035	97	7	-6	37	24	54
Individual Performance					\$ Values				
ADG	Act. IMF	REA/100 lbs	SEN	\$M	\$W	\$F	\$G	\$B	
2.64	4.68	1.05	9	68	43	27	20	47	



SINCLAIR EMBLAZON 9EH1

REG: 19674091 | DOB: 03/07/19 | TATTOO: 9EH1

O C C Emblazon 854E#
CCA Emblazon 702#¹⁵⁹⁸⁰⁰⁹⁸
Limestone Blackcap R128

D H D Traveler 6807#
Dixie Erica of CH 1019
Hyline Right Time 338#
Three Trees Blackcap 3337
Briar of Wye UMF 9024
Blackbird of Wye UMF 8623
N Bar Emulation EXT#
Sinclair Lady 3M18 4465#

Dam's
Production
WR: 2 @ 99
YR: 1 @ 99

Bonheur of Wye UMF 9667
Gerstell Lady 4WY1 0X24¹⁸⁶⁸¹⁹⁰¹
Sinclair Lady 0X24 3M18

Individual Performance					EPD's				
BW	ADJ. WW	WR	ADJ. YW	YR	CED	BW	WW	MILK	YW
76	610	96	1079	99	8	-1	41	21	72
Individual Performance					\$ Values				
ADG	Act. IMF	REA/100 lbs	SEN	\$M	\$W	\$F	\$G	\$B	
2.67	6.52	1.17	0	59	38	59	35	95	



FOLLOW SINCLAIR
CATTLE COMPANY FOR
VIDEO & PHOTO UPDATES &
SALE HIGHLIGHTS



COWHERD BUILDERS BY O C C GREAT PLAINS



Reference Sire to Lot 54-57 | O C C Great Plains 943G

Great Plains is a highly proven bull that is well known for beautiful daughters that are feminine, long bodied and perfect uddered. His cows age into their teens with excellent feet.

54 SINCLAIR FRONTIERSMAN 90C3

REG: 19480247 | DOB: 02/09/19 | TATTOO: 90C3

N Bar Emulation EXT#
O C C Great Plains 943G# 13092912
Dixie Erica of CH 1019

Sinclair Broker 3RC33
Sinclair Primrose 7K3 18805040
Sinclair Primrose 55X19 3RT7

Emulation N Bar 5522#
N Bar Primrose 2424
PBC 707 1M F0203#
Dixie Erica of CH 615

Sinclair Entrepreneur 8R101
Sinclair Lady Ida 8XV12 C52#
Sinclair Vision 3SX12
Sinclair Primrose 3RT7 D011

Dam's
Production
WR: 1 @ 107
YR: 1 @ 108

Individual Performance					EPD's				
BW	ADJ. WW	WR	ADJ. YW	YR	CED	BW	WW	MILK	YW
80	605	107	1091	108	3	.6	42	24	77
Individual Performance					\$ Values				
ADG	Act. IMF	REA/100 lbs	Mat	SEN	\$M	\$W	\$F	\$G	\$B
3.21	6.33	1.37	1	55	40	53	40	93	

Check out the carcass potential in this Great Plains son. "Maternal Genetics that never go out of style".

56 SINCLAIR FRONTIERSMAN 90C6

REG: 19480244 | DOB: 02/17/19 | TATTOO: 90C6

N Bar Emulation EXT#
O C C Great Plains 943G# 13092912
Dixie Erica of CH 1019

Sinclair Rollin Coal 5K2
Sinclair B Maid 7KF1 1SX1 18829726
Sinclair B Maid 1SX1 9X10

Emulation N Bar 5522#
N Bar Primrose 2424
PBC 707 1M F0203#
Dixie Erica of CH 615

Sinclair Broker 3RC33
Sinclair Ms Emulous 1FE23
Sinclair Vision X 857
Sinclair B Maid 9X10 507E

Dam's
Production
WR: 1 @ 110
YR: 1 @ 103

Individual Performance					EPD's				
BW	ADJ. WW	WR	ADJ. YW	YR	CED	BW	WW	MILK	YW
81	623	110	1047	103	9	-.7	37	24	63
Individual Performance					\$ Values				
ADG	Act. IMF	REA/100 lbs	Mat	SEN	\$M	\$W	\$F	\$G	\$B
2.79	5.13	1.29	10	60	40	45	30	75	

55 SINCLAIR FRONTIERSMAN 90C4

REG: 19480243 | DOB: 02/10/19 | TATTOO: 90C4

N Bar Emulation EXT#
O C C Great Plains 943G# 13092912
Dixie Erica of CH 1019

O C C Emblazon 854E#
Sinclair Lady 70E4 0C4 18841165
Sinclair Lady 0C4 4465

Emulation N Bar 5522#
N Bar Primrose 2424
PBC 707 1M F0203#
Dixie Erica of CH 615

D H D Traveler 6807#
Dixie Erica of CH 1019
Papa Rito T Intense DHD 6844#
Ideal 4465 of 6807 4286

Dam's
Production
WR: 1 @ 102
YR: 1 @ 105

Individual Performance					EPD's				
BW	ADJ. WW	WR	ADJ. YW	YR	CED	BW	WW	MILK	YW
82	575	102	1060	105	5	1.4	38	23	69
Individual Performance					\$ Values				
ADG	Act. IMF	REA/100 lbs	Mat	SEN	\$M	\$W	\$F	\$G	\$B
3.19	3.31	1.23	8	41	34	51	16	67	

57 SINCLAIR FRONTIERSMAN 90C7

REG: 19480248 | DOB: 02/23/19 | TATTOO: 90C7

N Bar Emulation EXT#
O C C Great Plains 943G# 13092912
Dixie Erica of CH 1019

Sinclair Preview 2TL6
Sinclair Primrose 5TA26 2G11 18154273
Sinclair Primrose 2G11 6D6

Emulation N Bar 5522#
N Bar Primrose 2424
PBC 707 1M F0203#
Dixie Erica of CH 615

Sinclair Timeless 8BA4#
Sinclair K Bty 0A3 7XT55
Sinclair Grass Master#
Sinclair Primrose 6D6 2S19

Dam's
Production
WR: 1 @ 99
YR: 1 @ 97

Individual Performance					EPD's				
BW	ADJ. WW	WR	ADJ. YW	YR	CED	BW	WW	MILK	YW
79	557	99	1037	97	5	.3	33	25	53
Individual Performance					\$ Values				
ADG	Act. IMF	REA/100 lbs	Mat	SEN	\$M	\$W	\$F	\$G	\$B
3.00	5.11	1.27	12	57	36	44	23	66	

Copied from the 1992 N Bar Production Sale Catalog. This foundation sire still does a lot of things right today!

REF. SIRE J

EMULATION 31

Calved March 8, 1968 * Reg. No. 6064368 * Tattoo 853



FCR ELATION LAD 652

Elation Lad 3

Elation 32 of Model

Blackcap Madonna L 10

Newhouse Elba of R H

Ellenmere 1073

Blackcap Oakleaf L 5

Emulous 7000

Erica of Emulous 17

Paragonada 3

Princess of Emulous 17

MISS EMULOUS 243

Emulous of T N 19

Miss Para Emulous 2

Birth Weight EPD	Birth Weight ACC	Weaning Weight EPD	Weaning Weight ACC	EPD	Milk ACC	COMB	Yearling Weight EPD	Yearling Weight ACC
-2.3	-.96	+9	96	+14	-.94	+18	+11	95

Sometimes backwards is the most progressive way! The old man, Emulation 31, is the most proven short gestation, easy calving, high milking bull in the Angus industry today. His daughters milk like crazy and take good care of themselves. No poor doers in these Emulation 31 females! Breed your heifers this way and you can sleep through calving!

PROVEN RANGE COW-MAKERS BY EMULATION 31!



SINCLAIR EMULATION 9A4

REG: 19488120 | DOB: 01/29/19 | TATTOO: 9A4

F C R Elation Lad 652
Emulation 31# 6064368
Miss Emulous 243



R R Rito 707#
Sinclair Lady 3R1 4465 ^{143/78380}
Ideal 4465 of 6807 4286

Elation Lad 3
Blackcap Madonna L 10
Emulous of T N 19
Miss Para Emulous 2

Rito N Bar
Eriskay of Rollin Rock 3
D H D Traveler 6807#
E E 4286 of Ideal 2240 1254

Dam's
Production
WR: 3 @ 104
YR: 3 @ 105

Individual Performance					EPD's				
BW	ADJ. WW	WR	ADJ. YW	YR	CED	BW	WW	MILK	YW
ET	638	100	1035	100	8	-1.0	22	18	35
Individual Performance					\$ Values				
ADG	Act. IMF	REA/100 lbs	Mat	Sen	\$M	\$W	\$F	\$G	\$B
2.47	3.91	1.14	18	35	22	32	8	41	



SINCLAIR EMULATION 9A3

REG: 19488119 | DOB: 02/01/19 | TATTOO: 9A3

F C R Elation Lad 652
Emulation 31# 6064368
Miss Emulous 243



R R Rito 707#
Sinclair Lady 3R1 4465 ^{143/78380}
Ideal 4465 of 6807 4286

Elation Lad 3
Blackcap Madonna L 10
Emulous of T N 19
Miss Para Emulous 2

Rito N Bar
Eriskay of Rollin Rock 3
D H D Traveler 6807#
E E 4286 of Ideal 2240 1254

Dam's
Production
WR: 3 @ 104
YR: 3 @ 105

Individual Performance					EPD's				
BW	ADJ. WW	WR	ADJ. YW	YR	CED	BW	WW	MILK	YW
ET	592	100	1003	100	8	-1.0	22	18	35
Individual Performance					\$ Values				
ADG	Act. IMF	REA/100 lbs	Mat	Sen	\$M	\$W	\$F	\$G	\$B
2.53	5.17	1.23	18	35	22	32	8	41	

The Best Emulation 31 son to surface in recent times. Outstanding breed character with an elite proven old-school pedigree. A tremendous "back to the future" herdsire prospect that is hard to fault.



Sire to Lot 58 - 61
Emulation 31

Dam to Lot 58 & 59 | Sinclair Lady 3R1 4465, when mated to Emulation genetics have made the some of the finest maternal Angus females whose genetics are in extremely high demand.



FOUNDATION PERFORMANCE EMULATION GENETICS



SINCLAIR EMULATION 9A1

REG: 19487870 | DOB: 02/19/19 | TATTOO: 9A1

F C R Elation Lad 652
Emulation 31# 6064368
Miss Emulous 243

Elation Lad 3
Blackcap Madonna L 10
Emulous of T N 19
Miss Para Emulous 2
N Bar Emulation EXT#
N Bar Kinochtry Beauty 4288
D H D Traveler 6807#
Papa Blackbird 9864#

Dam's
Production
WR: 13 @ 111
YR: 12 @ 109

Individual Performance					EPD's				
BW	ADJ. WW	WR	ADJ. YW	YR	CED	BW	WW	MILK	YW
79	638	108	1027	101	8	-1.5	26	22	39
Individual Performance					\$ Values				
ADG	Act. IMF	REA/100 lbs	\$EN	\$M	\$W	\$F	\$G	\$B	
2.53	4.87	1.33	14	44	30	46	26	72	



Dam to Lot 60 | Sinclair Blackbird 5E2 2C9



SINCLAIR EMPEROR 9XT1

REG: 19602904 | DOB: 02/19/19 | TATTOO: 9XT1

Individual Performance					EPD's				
BW	ADJ. WW	WR	ADJ. YW	YR	CED	BW	WW	MILK	YW
ET	682	117	1160	111	7	.5	46	24	71
Individual Performance					\$ Values				
ADG	Act. IMF	REA/100 lbs	\$EN	\$M	\$W	\$F	\$G	\$B	
2.95	7.39	1.06	11	64	52	53	46	99	



SINCLAIR EMPEROR 9XT3

REG: 19606059 | DOB: 02/21/19 | TATTOO: 9XT3

Individual Performance					EPD's				
BW	ADJ. WW	WR	ADJ. YW	YR	CED	BW	WW	MILK	YW
ET	621	100	1117	100	7	-6	37	24	58
Individual Performance					\$ Values				
ADG	Act. IMF	REA/100 lbs	\$EN	\$M	\$W	\$F	\$G	\$B	
3.08	5.62	1.17	12	57	47	47	39	87	



SINCLAIR EMPEROR 9XT2

REG: 19606058 | DOB: 02/21/19 | TATTOO: 9XT2

Individual Performance					EPD's				
BW	ADJ. WW	WR	ADJ. YW	YR	CED	BW	WW	MILK	YW
ET	554	100	996	100	7	-6	37	24	58
Individual Performance					\$ Values				
ADG	Act. IMF	REA/100 lbs	\$EN	\$M	\$W	\$F	\$G	\$B	
2.74	6.38	1.27	12	57	47	45	43	88	

N Bar Emulation EXT#
Sinclair Extra 4X13# 14774030
N Bar Lady Ida S C C 2P37
EMBRYO TRANSFER
N Bar Emulation Ext V722
N Bar Kinochtry Bty SCC 2V3# 14355077
N Bar Kinochtry Beauty Y3881

Emulation N Bar 5522#
N Bar Primrose 2424
N Bar Prime Time D806#
N Bar Lady Ida F1080
N Bar Emulation EXT#
N Bar Blackbird 4307#
Gardens Transition 7205 S1
N Bar Kinochtry Beauty T 599

Dam's
Production
WR: 10 @ 105
YR: 7 @ 100

Three consistent maternally oriented full brothers. Their foundation donor dam 2V3 sold to ZWT Ranch for \$11,000 in 2010 and was a massively powerful daughter of EXT V722, who produced into her late teens.



Sire to Lot 62, 63 & 64 | Sinclair Extra 4X13



SINCLAIR EMULATION 9A2

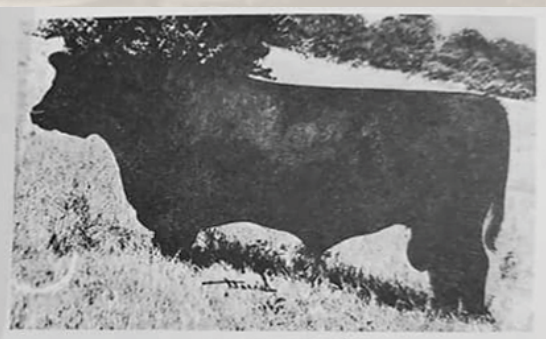
REG: 19487869 | DOB: 02/20/19 | TATTOO: 9A2

F C R Elation Lad 652
Emulation 31# 6064368
Miss Emulous 243

Elation Lad 3
Blackcap Madonna L 10
Emulous of T N 19
Miss Para Emulous 2
N Bar Emulation EXT#
N Bar Kinochtry Beauty 4288
Gardens Transition 7205 S1
N Bar Kinochtry Beauty T 599

Dam's
Production
WR: 11 @ 109
YR: 9 @ 106

Individual Performance					EPD's				
BW	ADJ. WW	WR	ADJ. YW	YR	CED	BW	WW	MILK	YW
91	640	108	1019	100	2	.8	25	24	37
Individual Performance					\$ Values				
ADG	Act. IMF	REA/100 lbs	\$EN	\$M	\$W	\$F	\$G	\$B	
2.47	4.31	1.22	15	43	29	36	25	60	



EMULATION 31



Dam to Lot 62, 63 & 64 | N Bar Kinochtry Bty SCC 2V3



67 SINCLAIR X- CHANGER 9FE8
 REG: 19475161 | DOB: 02/26/19 | TATTOO: 9FE8

Sinclair Emulation 5522 XP# 15696693
 N Bar Primrose Y3051#

O C C Emblazon 854E#
 Sinclair Enchantress WP 40E1# 17923625
 N Bar Enchantress WP F3619

Emulation 31#
 Ankony 8F78 Lass 8F275
 N Bar Emulation EXT#
 N Bar Primrose 2429#

D H D Traveler 6807#
 Dixie Erica of C H 1019
 N Bar Shadow X4124
 N Bar Enchantress A1376

Dam's
 Production
 WR: 4 @ 105
 YR: 3 @ 101

Individual Performance					EPD's				
BW	ADJ. WW	WR	ADJ. YW	YR	CED	BW	WW	MILK	YW
82	610	108	1072	106	7	.4	40	18	64
Individual Performance					\$ Values				
ADG	Act. IMF	REA/100 lbs	\$EN	\$M	\$W	\$F	\$G	\$B	
3.05	3.94	1.20	9	50	35	27	17	44	

65 SINCLAIR EXPLOSION 9E3
 REG: 19602931 | DOB: 01/26/19 | TATTOO: 9E3

N Bar Emulation EXT#
 N Bar Explosion# 11393414
 N Bar Kinochtry Beauty 4288

Cole Creek Cedar Ridge 1V#
 Sinclair Blkbird 6CR9 1SR13 18497907
 Sinclair Blkbird 1SR13 9A9

Emulation N Bar 5522#
 N Bar Primrose 2424
 Ankonian Cornhusker#
 N Bar Kinochtry Beauty 2364

Cole Creek Black Cedar 46P#
 Cole Creek Clovanada 49S#
 Sinclair Shadow Rider 9S34
 Sinclair Blkbird 9A9 6P58

Dam's
 Production
 WR: 1 @ 102
 YR: 1 @ 104

Individual Performance					EPD's				
BW	ADJ. WW	WR	ADJ. YW	YR	CED	BW	WW	MILK	YW
92	578	102	1133	104	-3	1.9	36	28	68
Individual Performance					\$ Values				
ADG	Act. IMF	REA/100 lbs	\$EN	\$M	\$W	\$F	\$G	\$B	
3.42	4.44	1.17	9	51	36	59	28	87	



Sire to Lot 67 & 68 | Sinclair Emulation 5522 XP

66 SINCLAIR EMULATION 9F3
 REG: 19607788 | DOB: 02/19/19 | TATTOO: 9F3

Emulation 31#
 Emulation N Bar 5522# 10095639
 Ankony 8F78 Lass 8F275

N Bar Double Time D0116
 N Bar Enchantress X4129 13326802
 N Bar Enchantress 4908#

F C R Elation Lad 652
 Miss Emulous 243
 Ankonian Dynamo 27542
 Ankony B999 Lass 26832

Gardens Prime Time#
 N Bar Primrose 4324B
 Basin Emulation 5953
 Coffey Enchantress 424

Dam's
 Production
 WR: 9 @ 109
 YR: 8 @ 108

Individual Performance					EPD's				
BW	ADJ. WW	WR	ADJ. YW	YR	CED	BW	WW	MILK	YW
ET	594	100	1069	100	6	-2	33	19	54
Individual Performance					\$ Values				
ADG	Act. IMF	REA/100 lbs	\$EN	\$M	\$W	\$F	\$G	\$B	
2.95	4.50	1.05	10	45	31	31	16	47	

Foundation proven maternal foundation pedigree.



Dam to Lot 66 | N Bar Enchantress X4129

68 SINCLAIR X-CHANGER 9FE11
 REG: 19602915 | DOB: 01/25/19 | TATTOO: 9FE11

Emulation N Bar 5522#
 Sinclair Emulation 5522 XP# 15696693
 N Bar Primrose Y3051#

Sinclair Rito Promise 0R12
 Sinclair Blkbird 3RP15 0X17 17534260
 Sinclair Blkbird 0X17 G352

Emulation 31#
 Ankony 8F78 Lass 8F275
 N Bar Emulation EXT#
 N Bar Primrose 2429#

Rito Revolve 0R5
 Sinclair Primrose 16X3 Z194
 N Bar Emulation EXT#
 N Bar Blackbird 8837

Dam's
 Production
 WR: 5 @ 97
 YR: 3 @ 95

Individual Performance					EPD's				
BW	ADJ. WW	WR	ADJ. YW	YR	CED	BW	WW	MILK	YW
86	601	101	1163	100	2	1.7	34	14	60
Individual Performance					\$ Values				
ADG	Act. IMF	REA/100 lbs	\$EN	\$M	\$W	\$F	\$G	\$B	
3.46	4.84	1.19	15	60	19	28	25	53	

69 SINCLAIR RIGHT TIME 9BT3
 REG: 19475067 | DOB: 02/28/19 | TATTOO: 9BT3

Leachman Right Time#
 BT Right Time 24J# 13360311
 Sitz Everelda Entense 1905

Sinclair Emulation 5522 XP#
 Sinclair K Bty 4FE7 8R46# 17941941
 Sinclair K Bty 8R46 39P3#

N Bar Emulation EXT#
 Leachman Erica 0025
 Traveler 124 G D A R#
 Sitz Everelda Entense 1791#

Emulation N Bar 5522#
 N Bar Primrose Y3051#
 Rito Revolve 0R5
 Sinclair K Bty 39P3 L309

Dam's
 Production
 WR: 4 @ 105
 YR: 2 @ 106

Individual Performance					EPD's				
BW	ADJ. WW	WR	ADJ. YW	YR	CED	BW	WW	MILK	YW
82	581	103	1056	105	2	1.7	44	21	75
Individual Performance					\$ Values				
ADG	Act. IMF	REA/100 lbs	\$EN	\$M	\$W	\$F	\$G	\$B	
3.14	5.71	1.06	1	52	39	41	28	69	



70 SINCLAIR PRAIRIE CHIEF 9G3
 REG: 19477774 | DOB: 02/23/19 | TATTOO: 9G3

BT Right Time 24J#
Sinclair Grass Master# 16027094
 N Bar Primrose Y3051#

Sinclair Vision X 857
Sinclair Enchantress 1SX12 16909534
 Sinclair Enchantress 9X23

Leachman Right Time#
 Sitz Everelda Entense 1905
 N Bar Emulation EXT#
 N Bar Primrose 2429#
 N Bar Shadow X4124
 N Bar Miss Emulous A404
 N Bar Emulation EXT#
 N Bar Enchantress WP F3619

Dam's
 Production
 WR: 5 @ 107
 YR: 3 @ 104

Individual Performance					EPD's				
BW	ADJ. WW	WR	ADJ. YW	YR	CED	BW	WW	MILK	YW
88	566	103	1041	100	5	1.3	38	27	62
Individual Performance					\$ Values				
ADG	Act. IMF	REA/100 lbs	SEN	\$M	\$W	\$F	\$G	\$B	
3.14	5.23	1.07	6	57	42	47	31	78	

73 SINCLAIR EXCEL 9Z2
 REG: 19614337 | DOB: 02/20/19 | TATTOO: 9Z2

PBC 707 1M E0046
Rito Excel 809# 8781383
 PBC 707 1F E0060

Papa Rito T Intense DHD 6844#
PLD Eriskay Papa 011 11451988
 Papa Eriskay 7862#

R R Rito 707#
 P H C Blackcap Lassie 6
 R R Rito 707#
 PBC 1F 0041

Papa Rito Traveler 4807
 Blackcap Mc Henry D H D 4810
 Cottontail Maternal POWER464#
 Eriskay D H D 4824

Dam's
 Production
 WR: 8 @ 103
 YR: 7 @ 105

Individual Performance					EPD's				
BW	ADJ. WW	WR	ADJ. YW	YR	CED	BW	WW	MILK	YW
ET	575	99	1065	102	6	1.4	31	10	52
Individual Performance					\$ Values				
ADG	Act. IMF	REA/100 lbs	SEN	\$M	\$W	\$F	\$G	\$B	
3.01	4.23	1.33	19	30	13	39	19	58	

Legendary outcross genetics that is a maternal brother to Papa Universe 515. A really unique son of "The Captain" that is packed full of meat and muscle.



Sire to Lot 73 | Rito Excel 809

71 SINCLAIR SHADOW 9SH3
 REG: 19475336 | DOB: 03/09/19 | TATTOO: 9SH3

N Bar Shadow X4124
Sinclair Shadow Rider 658 18506682
 N Bar Clova Pride E2188

Sinclair Preview 2TL6
Sinclair Ms Emulous 5TA31 18154276
 Sinclair Ms Emulous 2D33

N Bar Emulation EXT#
 N Bar Enchantress 4908#
 N Bar Cochise X3944
 N Bar Clova Pride Y4045
 Sinclair Timeless 8BA4#
 Sinclair K Bty OA3 7XT55
 Sinclair Fortunate Son#
 Sinclair M Emulous 4ET5 D47

Dam's
 Production
 WR: 3 @ 102
 YR: 1 @ 106

Individual Performance					EPD's				
BW	ADJ. WW	WR	ADJ. YW	YR	CED	BW	WW	MILK	YW
93	643	114	1070	106	-2	2.0	42	21	67
Individual Performance					\$ Values				
ADG	Act. IMF	REA/100 lbs	SEN	\$M	\$W	\$F	\$G	\$B	
2.82	6.05	1.24	7	57	37	39	31	70	

72 SINCLAIR EMULATION 9VX2
 REG: 19475370 | DOB: 03/15/19 | TATTOO: 9VX2

N Bar Emulation Ext V722
Sinclair Brigadier 7XV1 18836505
 N Bar Kinochtry Beauty Z1925

Sinclair Vision 3SX12
Sinclair B Maid 5SX18 3RC25 18365979
 Sinclair B Maid 3RC25 9X10

N Bar Emulation EXT#
 N Bar Blackbird 4307#
 N Bar Emulation EXT#
 N Bar Kinochtry Beauty 4310#
 Sinclair Vision X 857
 Sinclair K Bty OF1 2V3
 Sinclair Entrepreneur 8R101
 Sinclair B Maid 9X10 507E

Dam's
 Production
 WR: 2 @ 101
 YR: 1 @ 104

Individual Performance					EPD's				
BW	ADJ. WW	WR	ADJ. YW	YR	CED	BW	WW	MILK	YW
90	583	103	1114	104	-1	2.6	40	21	70
Individual Performance					\$ Values				
ADG	Act. IMF	REA/100 lbs	SEN	\$M	\$W	\$F	\$G	\$B	
3.32	4.81	1.17	4	51	31	50	27	78	



Dam to Lot 73 | PLD Eriskay Papa 011



ELITE CALVING EASE BY IN TIME!



SINCLAIR TIME KEEPER 9BA28

REG: 19602911 | DOB: 01/18/19 | TATTOO: 9BA28

BT Right Time 24J#
Sinclair IN Time 6BT39¹⁵³⁶⁶⁵⁸¹
N Bar Miss Emulous A404

Rito Revolve OR5
Sinclair E Blkbird 3R15 2N12¹⁷⁵⁷⁸⁷⁴⁰
Sinclair E Blackbird 2N12

Leachman Right Time#
Sitz Everelda Entense 1905
N Bar Emulation Ext Z52
N Bar Miss Emulous X3091#
R R Rito 707#
Ideal 1456 of 8103 8114
D H D Traveler 6807#
Papa Envious Blackbird 8832

Dam's
Production
WR: 3 @ 99
YR: 3 @ 97

Individual Performance					EPD's				
BW	ADJ. WW	WR	ADJ. YW	YR	CED	BW	WW	MILK	YW
78	652	115	1196	109	10	-1.4	41	22	69
Individual Performance				Mat	\$ Values				
ADG	Act. IMF	REA/100 lbs		\$EN	\$M	\$W	\$F	\$G	\$B
3.36	5.84	.89		5	48	42	33	26	59

Tremendous calving ease herdsire prospect with performance, length and style! Dam is a foundation donor for Matt Peterson in Kansas.



Sire to Lot 74 - 76 | Sinclair IN Time 6BT39



SINCLAIR TIME KEEPER 9BA23

REG: 19602898 | DOB: 01/29/19 | TATTOO: 9BA23

BT Right Time 24J#
Sinclair IN Time 6BT39¹⁵³⁶⁶⁵⁸¹
N Bar Miss Emulous A404

Sinclair Rito Legacy 3R9
Sinclair Primrose 1RL9 D011#¹⁶⁹³⁴⁶³¹
N Bar Primrose 4324B

Leachman Right Time#
Sitz Everelda Entense 1905
N Bar Emulation Ext Z52
N Bar Miss Emulous X3091#
R R Rito 707#
Ideal 4465 of 6807 4286
N Bar Emulation EXT#
Primrose N Bar 8881

Dam's
Production
WR: 7 @ 104
YR: 7 @ 103

Individual Performance					EPD's				
BW	ADJ. WW	WR	ADJ. YW	YR	CED	BW	WW	MILK	YW
80	570	100	1098	100	9	-1.4	29	27	50
Individual Performance				Mat	\$ Values				
ADG	Act. IMF	REA/100 lbs		\$EN	\$M	\$W	\$F	\$G	\$B
3.25	4.61	1.12		10	49	35	29	16	45



SINCLAIR TIME KEEPER 9BA19

REG: 19472583 | DOB: 02/23/19 | TATTOO: 9BA19

BT Right Time 24J#
Sinclair IN Time 6BT39¹⁵³⁶⁶⁵⁸¹
N Bar Miss Emulous A404

Sinclair Executive 9XV2
Sinclair Blkbird 5U15 3006¹⁸¹⁵⁴¹⁵³
Sinclair Blkbird 3006 OXM1#

Leachman Right Time#
Sitz Everelda Entense 1905
N Bar Emulation Ext Z52
N Bar Miss Emulous X3091#
N Bar Emulation Ext V722
N Bar Primrose Y3051#
Basin Rainmaker 914A
Sinclair Blkbird OXM1 8XV8

Dam's
Production
WR: 3 @ 103
YR: 3 @ 101

Individual Performance					EPD's				
BW	ADJ. WW	WR	ADJ. YW	YR	CED	BW	WW	MILK	YW
69	586	104	1093	108	14	-4.0	31	27	59
Individual Performance				Mat	\$ Values				
ADG	Act. IMF	REA/100 lbs		\$EN	\$M	\$W	\$F	\$G	\$B
3.34	4.73	1.26		6	60	37	42	30	73



77 SINCLAIR POWDER RIVER 9FL6
REG: 19472563 | DOB: 02/17/19 | TATTOO: 9FL6

Sinclair X-Changer 2FE9
Sinclair Piney Creek 6FV16 18486504
Sinclair K Bty 2X7 6MB8#

Sinclair Emperor OXT51
Sinclair Bella Donna 5X011 18152018
Sinclair Bella Donna 1UX4#

Sinclair Emulation 5522 XP#
Sinclair Blackie 7V3 2P18
Sinclair Timeless 8BA4#
Sinclair K Bty 6MB8 B345

Sinclair Extra 4X13#
Sinclair Blkbird 70C10 J472
Sinclair United X 8X21
Sinclair Bella Donna 8N2 A61

Dam's
Production
WR: 2 @ 107
YR: 1 @ 117

Individual Performance					EPD's				
BW	ADJ. WW	WR	ADJ. YW	YR	CED	BW	WW	MILK	YW
77	664	117	1190	117	7	.5	50	25	94
Individual Performance					\$ Values				
ADG	Act. IMF	REA/100 lbs	\$EN	\$M	\$W	\$F	\$G	\$B	
3.47	5.96	.86	-9	59	48	69	25	94	



78 SINCLAIR POWDER RIVER 9FL9
REG: 19472564 | DOB: 02/23/19 | TATTOO: 9FL9

Sinclair X-Changer 2FE9
Sinclair Piney Creek 6FV16 18486504
Sinclair K Bty 2X7 6MB8#

Sinclair Emperor OXT51
Sinclair Blkcap 6X014 2G54 18486481
Sinclair Blkcap 2G54 8BT3

Sinclair Emulation 5522 XP#
Sinclair Blackie 7V3 2P18
Sinclair Timeless 8BA4#
Sinclair K Bty 6MB8 B345

Sinclair Extra 4X13#
Sinclair Blkbird 70C10 J472
Sinclair Grass Master#
Sinclair Blkcap 8BT3 A29

Dam's
Production
WR: 1 @ 108
YR: 1 @ 106

Individual Performance					EPD's				
BW	ADJ. WW	WR	ADJ. YW	YR	CED	BW	WW	MILK	YW
78	613	108	1136	106	5	.6	45	25	83
Individual Performance					\$ Values				
ADG	Act. IMF	REA/100 lbs	\$EN	\$M	\$W	\$F	\$G	\$B	
3.27	4.86	1.15	-1	61	44	65	25	90	



80 SINCLAIR EMULATION X 9XR6
REG: 19475378 | DOB: 03/09/19 | TATTOO: 9XR6

N Bar Emulation EXT#
Sinclair Emulation X 8X17 16027265
Rito Majesty 5A78 of 809

Basin Rainmaker 914A
Sinclair Lady Ida 3001 0XH4# 17463029
Sinclair Lady Ida 0XH4 3S41

Emulation N Bar 5522#
N Bar Primrose 2424
Rito Excel 809#
Ruth 657C of B V
Basin Rainmaker 654X#
Basin Blackbird 584Y#
Sinclair Extravagant 6X7#
Sinclair Lady Ida 3S41 J424

Dam's
Production
WR: 5 @ 109
YR: 4 @ 106

Individual Performance					EPD's				
BW	ADJ. WW	WR	ADJ. YW	YR	CED	BW	WW	MILK	YW
80	658	116	1151	114	9	-1.3	42	24	72
Individual Performance					\$ Values				
ADG	Act. IMF	REA/100 lbs	\$EN	\$M	\$W	\$F	\$G	\$B	
3.25	3.98	1.07	-1	50	45	64	14	79	



79 SINCLAIR POWDER RIVER 9FL10
REG: 19472560 | DOB: 02/21/19 | TATTOO: 9FL10

Sinclair X-Changer 2FE9
Sinclair Piney Creek 6FV16 18486504
Sinclair K Bty 2X7 6MB8#

O C C Great Plains 943G#
Sinclair Enchantress 00C2 16665568
Sinclair Enchantress 5GT2

Sinclair Emulation 5522 XP#
Sinclair Blackie 7V3 2P18
Sinclair Timeless 8BA4#
Sinclair K Bty 6MB8 B345

N Bar Emulation EXT#
Dixie Erica of CH 1019
Gardens Transition 7205 S1
S C C Enchantress 3F3 X412

Dam's
Production
WR: 8 @ 99
YR: 6 @ 104

Individual Performance					EPD's				
BW	ADJ. WW	WR	ADJ. YW	YR	CED	BW	WW	MILK	YW
86	567	100	1105	109	4	1.0	41	22	81
Individual Performance					\$ Values				
ADG	Act. IMF	REA/100 lbs	\$EN	\$M	\$W	\$F	\$G	\$B	
3.55	5.41	1.03	3	61	34	50	23	72	



81 SINCLAIR EMULATION X 9XR14
REG: 19475387 | DOB: 03/27/19 | TATTOO: 9XR14

N Bar Emulation EXT#
Sinclair Emulation X 8X17 16027265
Rito Majesty 5A78 of 809

Sinclair Timeless 8BA4#
Sinclair Enchantress 5TL25 18154074
Sinclair Enchantress 3R11

Emulation N Bar 5522#
N Bar Primrose 2424
Rito Excel 809#
Ruth 657C of B V
Sinclair IN Time 6BT39
Sinclair Blackbird 2P8 7079#
Rito Revolve OR5
Sinclair Enchantress 9XX3

Dam's
Production
WR: 2 @ 105
YR: 2 @ 103

Individual Performance					EPD's				
BW	ADJ. WW	WR	ADJ. YW	YR	CED	BW	WW	MILK	YW
78	607	107	1138	107	9	-1.7	38	20	68
Individual Performance					\$ Values				
ADG	Act. IMF	REA/100 lbs	\$EN	\$M	\$W	\$F	\$G	\$B	
3.32	5.04	1.25	8	53	36	56	27	84	



82



82 SINCLAIR PINEY CREEK 9FV14
REG: 19475212 | DOB: 03/20/19 | TATTOO: 9FV14

Sinclair Emulation 5522 XP#
Sinclair X-Changer 2FE9 17209203
Sinclair Blackie 7V3 2P18

Sinclair Executive 9XV2
Sinclair Lady Ida 5U22 3001 18154160
Sinclair Lady Ida 3001 0XH4#

Emulation N Bar 5522#
N Bar Primrose Y3051#
N Bar Emulation Ext A1747
Sinclair Blackie 2P18 4452
N Bar Emulation Ext V722
N Bar Primrose Y3051#
Basin Rainmaker 914A
Sinclair Lady Ida 0XH4 3S41

Dam's
Production
WR: 3 @ 103
YR: 2 @ 111

Individual Performance					EPD's				
BW	ADJ. WW	WR	ADJ. YW	YR	CED	BW	WW	MILK	YW
86	622	110	1256	118	2	1.5	49	18	91
Individual Performance					\$ Values				
ADG	Act. IMF	REA/100 lbs	\$EN	\$M	\$W	\$F	\$G	\$B	
3.96	4.43	1.04	-6	50	38	59	20	79	

Excellent performance from birth to yearling in this high indexing bull that is thick topped and ended. He carries a cow-maker pedigree stacked with proven Sinclair and N Bar genetics.



Grandam to Lot 83 | CU Bemindful Maid 507E
The full sister to DHD Traveler 6807

84 SINCLAIR PINEY CREEK 9FV26
REG: 19477711 | DOB: 02/24/19 | TATTOO: 9FV26

Sinclair Emulation 5522 XP#
Sinclair X-Changer 2FE9 17209203
Sinclair Blackie 7V3 2P18

Sinclair Rito Legacy 3R9
Sinclair K Bty 8RL13 6E7 16026929
Sinclair K BTY 6E7 A3

Emulation N Bar 5522#
N Bar Primrose Y3051#
N Bar Emulation Ext A1747
Sinclair Blackie 2P18 4452

R R Rito 707#
Ideal 4465 of 6807 4286
N Bar Explosion#
N Bar Kinochtry Beauty Y3881

Dam's
Production
WR: 10 @ 108
YR: 7 @ 106

Individual Performance					EPD's				
BW	ADJ. WW	WR	ADJ. YW	YR	CED	BW	WW	MILK	YW
84	664	115	1131	103	-1	1.8	48	20	77
Individual Performance					EPD's				
ADG	Act. IMF	REA/100 lbs	SEN	\$M	\$W	\$F	\$G	\$B	
3.04	4.40	1.10	8	53	45	47	25	73	

83 SINCLAIR PINEY CREEK 9FV8
REG: 19475214 | DOB: 02/21/19 | TATTOO: 9FV8

Sinclair Emulation 5522 XP#
Sinclair X-Changer 2FE9 17209203
Sinclair Blackie 7V3 2P18

Sinclair Rito Legacy 3R9
Sinclair B Maid 2RL6 507E 17251779
CU Bemindful Maid 507E

Emulation N Bar 5522#
N Bar Primrose Y3051#
N Bar Emulation Ext A1747
Sinclair Blackie 2P18 4452

R R Rito 707#
Ideal 4465 of 6807 4286
Q A S Traveler 23-4#
Bemindful Maid D H D 0807#

Dam's
Production
WR: 6 @ 104
YR: 6 @ 108

Individual Performance					EPD's				
BW	ADJ. WW	WR	ADJ. YW	YR	CED	BW	WW	MILK	YW
80	605	107	1160	115	5	1.4	40	18	75
Individual Performance					EPD's				
ADG	Act. IMF	REA/100 lbs	SEN	\$M	\$W	\$F	\$G	\$B	
3.66	5.57	.91	3	36	29	48	24	72	

85 SINCLAIR PINEY CREEK 9FV7
REG: 19479757 | DOB: 02/21/19 | TATTOO: 9FV7

Sinclair Emulation 5522 XP#
Sinclair X-Changer 2FE9 17209203
Sinclair Blackie 7V3 2P18

Sinclair Rito Legacy 3R9
Sinclair C Pride 1RL12 J204 16934634
N Bar Clova Pride WP C2009

Emulation N Bar 5522#
N Bar Primrose Y3051#
N Bar Emulation Ext A1747
Sinclair Blackie 2P18 4452

R R Rito 707#
Ideal 4465 of 6807 4286
N Bar Shadow X4124
N Bar Clova Pride 21553

Dam's
Production
WR: 6 @ 105
YR: 5 @ 104

Individual Performance					EPD's				
BW	ADJ. WW	WR	ADJ. YW	YR	CED	BW	WW	MILK	YW
75	573	101	1083	107	7	-3	39	20	69
Individual Performance					EPD's				
ADG	Act. IMF	REA/100 lbs	SEN	\$M	\$W	\$F	\$G	\$B	
3.37	4.75	1.13	5	42	37	41	19	60	



86 SINCLAIR EMULATION 9EE7
REG: 19472624 | DOB: 03/10/19 | TATTOO: 9EE7

Sinclair Emulation 5522 XP#
Sinclair X-Changer 5FE15 18152700
Sinclair M Emulous 4ET1 D47#

Sinclair Sun Dial 4TL2
Sinclair Queen 6TL14 4XX17 18506534
Sinclair Queen 4XX17 9V4

Emulation N Bar 5522#
N Bar Primrose Y3051#
N Bar Explosion TNT#
N Bar Miss Emulous B514

Sinclair Timeless 8BA4#
Sinclair K Bty 2X7 6MB8#
Sinclair Emulation XXP
Sinclair Queen 9V4 12A3

Dam's
Production
WR: 2 @ 111
YR: 2 @ 106

Individual Performance					EPD's				
BW	ADJ. WW	WR	ADJ. YW	YR	CED	BW	WW	MILK	YW
73	612	108	1135	106	11	-2.8	34	25	62
Individual Performance					EPD's				
ADG	Act. IMF	REA/100 lbs	SEN	\$M	\$W	\$F	\$G	\$B	
3.27	5.57	1.17	4	64	39	37	35	72	

Top calving ease prospect that is long bodied, smooth shouldered and attractive. Calve heifers with confidence!

87 SINCLAIR EMULATION 9EE18
REG: 19472607 | DOB: 03/22/19 | TATTOO: 9EE18

Sinclair Emulation 5522 XP#
Sinclair X-Changer 5FE15 18152700
Sinclair M Emulous 4ET1 D47#

Q A S Traveler 23-4#
Sinclair Majesty 6Q2 5A61 18520673
Rito Majesty 5A61 of F0203

Emulation N Bar 5522#
N Bar Primrose Y3051#
N Bar Explosion TNT#
N Bar Miss Emulous B514

Band 234 of Ideal 3163#
Q A S Blackbird Eve 601 1
PBC 707 1M F0203#
B A F Excel Lady 2104

Dam's
Production
WR: 2 @ 106
YR: 2 @ 96

Individual Performance					EPD's				
BW	ADJ. WW	WR	ADJ. YW	YR	CED	BW	WW	MILK	YW
76	604	107	1058	99	9	-1.1	29	22	43
Individual Performance					EPD's				
ADG	Act. IMF	REA/100 lbs	SEN	\$M	\$W	\$F	\$G	\$B	
2.84	5.87	1.26	15	45	32	19	31	51	



SALE DAY DIRECT BID

SINCLAIR REPRESENTATIVE PHONES

Steve Blankley II 240-625-5415
Lance Cline 785-564-1744
Mike Bazzle 540-421-7411
Logan Baker 307-254-1477



88 SINCLAIR EXECUTIVE 9UE7
REG: 19475367 | DOB: 03/16/19 | TATTOO: 9UE7

Sinclair Deliverance 5U38
Sinclair Delivery 7UD6 18829772
Sinclair Delia 1FE18 404

N Bar Prime Time D806#
Sinclair K Bty 9P32 V149 16361084
N Bar Kinochtry Beauty 4317#

Sinclair Executive 9XV2
Sinclair Delia 2F6 404
Sinclair Emulation 5522 XP#
Otoraro Delia 404

Gardens Prime Time#
N Bar Miss Emulous A404
Leachman Bold Driver#
N Bar Kinochtry Beauty 2414

Dam's
Production
WR: 9 @ 108
YR: 8 @ 105

Individual Performance					EPD's				
BW	ADJ. WW	WR	ADJ. YW	YR	CED	BW	WW	MILK	YW
89	697	118	1108	109	2	1.8	42	24	68
Individual Performance					EPD's				
ADG	Act. IMF	REA/100 lbs	SEN	SM	SW	SF	SG	SB	
2.67	3.94	1.31	6	61	41	39	29	68	



Dam to Lot 88 | Sinclair K Bty 9P32 V149, full sister to the dam of Lot 6, Sinclair K Bty 9P31 V149

91 SINCLAIR EASY TIME 9TG13
REG: 19472587 | DOB: 03/21/19 | TATTOO: 9TG13

Sinclair Timeless 8BA4#
Sinclair Sun Dial 5TL43 18154091
Sinclair Primrose 1G13 6E11#

Sinclair Executive 9XV2
Sinclair Primrose 5U4 3D10 18154144
Sinclair Primrose 3D10 655

Sinclair IN Time 6BT39
Sinclair Blackbird 2P8 7079#
Sinclair Grass Master#
Sinclair Primrose 6E11 Z194

N Bar Emulation Ext V722
N Bar Primrose Y3051#
Sinclair Fortunate Son#
Sinclair Primrose 655 4P31

Dam's
Production
WR: 3 @ 111
YR: 2 @ 104

Individual Performance					EPD's				
BW	ADJ. WW	WR	ADJ. YW	YR	CED	BW	WW	MILK	YW
74	626	111	1122	105	11	-2.7	38	28	65
Individual Performance					EPD's				
ADG	Act. IMF	REA/100 lbs	SEN	SM	SW	SF	SG	SB	
3.10	4.55	1.09	3	63	48	32	11	42	

92 SINCLAIR EASY TIME 9TG2
REG: 19472602 | DOB: 03/08/19 | TATTOO: 9TG2

Sinclair Timeless 8BA4#
Sinclair Sun Dial 5TL43 18154091
Sinclair Primrose 1G13 6E11#

Sinclair Timeless 8BA4#
Sinclair Lady 2TL13 0X35 17199694
Sinclair Lady 0X35 3M17

Sinclair IN Time 6BT39
Sinclair Blackbird 2P8 7079#
Sinclair Grass Master#
Sinclair Primrose 6E11 Z194

N Bar Emulation Ext V722
N Bar Primrose Y3051#
Sinclair Lady 3M17 4465#

Dam's
Production
WR: 6 @ 110
YR: 5 @ 104

Individual Performance					EPD's				
BW	ADJ. WW	WR	ADJ. YW	YR	CED	BW	WW	MILK	YW
77	616	109	1048	104	11	-3.0	33	32	61
Individual Performance					EPD's				
ADG	Act. IMF	REA/100 lbs	SEN	SM	SW	SF	SG	SB	
2.85	6.50	1.15	1	57	45	39	29	68	

89 SINCLAIR EXECUTIVE 9UE2
REG: 19475362 | DOB: 02/26/19 | TATTOO: 9UE2

Sinclair Deliverance 5U38
Sinclair Delivery 7UD6 18829772
Sinclair Delia 1FE18 404

PBC 707 1M F0203#
Sinclair Blkcap 7RF1 0953 15609284
Papa Blackcap 0953#

R R Rito 707#
Evocate Princess T
Papa Rito Traveler 4807
Blackcap D H D 2807

Dam's
Production
WR: 10 @ 103
YR: 8 @ 100

Individual Performance					EPD's				
BW	ADJ. WW	WR	ADJ. YW	YR	CED	BW	WW	MILK	YW
83	611	104	1040	103	4	1.3	31	19	49
Individual Performance					EPD's				
ADG	Act. IMF	REA/100 lbs	SEN	SM	SW	SF	SG	SB	
2.79	4.54	1.11	15	55	25	17	21	38	

93 SINCLAIR EASY TIME 9TG15
REG: 19472586 | DOB: 03/25/19 | TATTOO: 9TG15

Sinclair Timeless 8BA4#
Sinclair Sun Dial 5TL43 18154091
Sinclair Primrose 1G13 6E11#

Sinclair Executive 9XV2
Sinclair Blkbird 5U20 3VB6 18154158
Sinclair Blkbird 3VB6 0P29

Sinclair IN Time 6BT39
Sinclair Blackbird 2P8 7079#
Sinclair Grass Master#
Sinclair Primrose 6E11 Z194

N Bar Emulation Ext V722
N Bar Primrose Y3051#
Sinclair Express 6V47
Sinclair Blkbird 0P29 F188

Dam's
Production
WR: 3 @ 106
YR: 3 @ 108

Individual Performance					EPD's				
BW	ADJ. WW	WR	ADJ. YW	YR	CED	BW	WW	MILK	YW
74	561	99	1083	101	12	-2.8	38	24	71
Individual Performance					EPD's				
ADG	Act. IMF	REA/100 lbs	SEN	SM	SW	SF	SG	SB	
3.26	6.03	1.19	4	51	43	46	34	80	

90 SINCLAIR EXECUTIVE 9UE3
REG: 19475361 | DOB: 03/01/19 | TATTOO: 9UE3

Sinclair Deliverance 5U38
Sinclair Delivery 7UD6 18829772
Sinclair Delia 1FE18 404

BT Right Time 24J#
Sinclair K Bty 7BT20 11P3 15638147
Sinclair K Bty 11P3 L234

Sinclair Executive 9XV2
Sinclair Delia 2F6 404
Sinclair Emulation 5522 XP#
Otoraro Delia 404

Leachman Right Time#
Sitz Everelda Entense 1905
N Bar Prime Time D806#
N Bar Kinochtry Beauty 20051

Dam's
Production
WR: 11 @ 106
YR: 8 @ 103

Individual Performance					EPD's				
BW	ADJ. WW	WR	ADJ. YW	YR	CED	BW	WW	MILK	YW
97	606	103	987	97	-4	4.9	38	21	62
Individual Performance					EPD's				
ADG	Act. IMF	REA/100 lbs	SEN	SM	SW	SF	SG	SB	
2.48	3.17	1.18	13	58	22	35	15	50	

94 SINCLAIR DYNASTY 9WC6
REG: 19475399 | DOB: 03/16/19 | TATTOO: 9WC6

Wandering CRK Dynasty JRM 2F#
Sinclair Dynasty 3WCD7 17790047
Sinclair Eriskay 2N1 7883#

Sinclair Emulation 5522 XP#
Sinclair Erica 2FE2 8BT12 17199707
Sinclair Erica 8BT12 A18

Eston Encounter M G 55 71
Rose G V 37U
D H D Traveler 6807#
Papa Eriskay 7883

Emulation N Bar 5522#
N Bar Primrose Y3051#
BT Right Time 24J#
Rito Majesty 4A18 of F0203

Dam's
Production
WR: 6 @ 104
YR: 5 @ 106

Individual Performance					EPD's				
BW	ADJ. WW	WR	ADJ. YW	YR	CED	BW	WW	MILK	YW
86	629	111	1176	116	6	1.9	48	19	86
Individual Performance					EPD's				
ADG	Act. IMF	REA/100 lbs	SEN	SM	SW	SF	SG	SB	
3.61	3.84	1.16	-4	49	38	62	20	82	

95 SINCLAIR DYNASTY 9WC7
REG: 19475395 | DOB: 03/16/19 | TATTOO: 9WC7

Wandering CRK Dynasty JRM 2F#
Sinclair Dynasty 3WCD7 17790047
Sinclair Eriskay 2N1 7883#

O C C Great Plains 943G#
Sinclair Ms Emulous 50C14 18155629
Sinclair Ms Emulous 3TL26

Eston Encounter M G 55 71
Rose G V 37U
D H D Traveler 6807#
Papa Eriskay 7883

N Bar Emulation EXT#
Dixie Erica of C H 1019
Sinclair Timeless 8BA4#
Sinclair Ms Emulous 1TX2

Dam's
Production
WR: 3 @ 112
YR: 2 @ 112

Individual Performance					EPD's				
BW	ADJ. WW	WR	ADJ. YW	YR	CED	BW	WW	MILK	YW
87	651	115	1213	120	6	1.3	46	23	88
Individual Performance					EPD's				
ADG	Act. IMF	REA/100 lbs	\$EN	\$M	\$W	\$F	\$G	\$B	
3.71	3.92	1.17	-6	47	40	66	16	82	

99 SINCLAIR LINE- RX 9RB4
REG: 19475243 | DOB: 03/06/19 | TATTOO: 9RB4

Sinclair Rito 2R1
Sinclair Rito 4RX3 17830569
Sinclair Q Mother 1XX13 7R4

Sinclair Timeless 8BA4#
Sinclair K Bty 5TL28 3RP3 18154077
Sinclair K Bty 3RP3 01B6

Rito Revolve OR5
N Bar Miss Emulous A404
Sinclair Emulation XXP
Sinclair Q Mother 7R4 E008

N Bar Emulation EXT#
Sinclair IN Time 6BT39
Sinclair Blackbird 2P8 7079#
Sinclair Rito Promise OR12
Sinclair K Bty 01B6 5PV66#

Dam's
Production
WR: 3 @ 103
YR: 3 @ 100

Individual Performance					EPD's				
BW	ADJ. WW	WR	ADJ. YW	YR	CED	BW	WW	MILK	YW
89	560	99	1091	102	4	.6	29	18	59
Individual Performance					EPD's				
ADG	Act. IMF	REA/100 lbs	\$EN	\$M	\$W	\$F	\$G	\$B	
3.32	6.31	.96	13	61	18	42	38	80	

96 SINCLAIR GRASS DYNASTY 9WG4
REG: 19472540 | DOB: 03/14/19 | TATTOO: 9WG4

Sinclair Dynasty 3WCD7
Sinclair Dynasty 7WC17 18826235
Sinclair Primrose 1G13 6E11#

Sinclair Timeless 8BA4#
Sinclair Enchantress 5TL8 18154059
Sinclair Enchantress 3XV1

Wandering CRK Dynasty JRM 2F#
Sinclair Eriskay 2N1 7883#
Sinclair Grass Master#
Sinclair Primrose 6E11 Z194

Sinclair IN Time 6BT39
Sinclair Blackbird 2P8 7079#
N Bar Emulation Ext V722
N Bar Enchantress S C C 2F3

Dam's
Production
WR: 3 @ 107
YR: 2 @ 106

Individual Performance					EPD's				
BW	ADJ. WW	WR	ADJ. YW	YR	CED	BW	WW	MILK	YW
71	577	102	1075	101	14	-3.5	31	27	60
Individual Performance					EPD's				
ADG	Act. IMF	REA/100 lbs	\$EN	\$M	\$W	\$F	\$G	\$B	
3.11	6.49	1.16	3	38	37	39	36	76	

100 SINCLAIR LINE- RX 9RB7
REG: 19475234 | DOB: 03/18/19 | TATTOO: 9RB7

Sinclair Rito 2R1
Sinclair Rito 4RX3 17830569
Sinclair Q Mother 1XX13 7R4

Sinclair Extra 4X13#
Sinclair Blkcap Mc 0XT28 16657588
Sinclair Blkcap Mc 8XE26

Rito Revolve OR5
N Bar Miss Emulous A404
Sinclair Emulation XXP
Sinclair Q Mother 7R4 E008

N Bar Emulation EXT#
N Bar Lady Ida S C C 2P37
Sinclair Excellency 5X25
Sinclair Blackcap M 2J90#

Dam's
Production
WR: 8 @ 100
YR: 5 @ 103

Individual Performance					EPD's				
BW	ADJ. WW	WR	ADJ. YW	YR	CED	BW	WW	MILK	YW
81	546	96	1021	101	7	-.5	36	16	66
Individual Performance					EPD's				
ADG	Act. IMF	REA/100 lbs	\$EN	\$M	\$W	\$F	\$G	\$B	
3.14	5.06	1.25	13	66	26	48	31	78	

97 SINCLAIR GRASS DYNASTY 9WG6
REG: 19472537 | DOB: 03/27/19 | TATTOO: 9WG6

Sinclair Dynasty 3WCD7
Sinclair Dynasty 7WC17 18826235
Sinclair Primrose 1G13 6E11#

Sinclair Fortunate Son#
Sinclair Lady Ida 6D2 1XX5 18486025
Sinclair Lady Ida 1XX5 7V19

Wandering CRK Dynasty JRM 2F#
Sinclair Eriskay 2N1 7883#
Sinclair Grass Master#
Sinclair Primrose 6E11 Z194

Sinclair Emulate 7XT28
Sinclair Blackbird 2P8 7079#
Sinclair Emulation XXP
Sinclair Lady Ida 7V19 04F3

Dam's
Production
WR: 2 @ 104
YR: 2 @ 104

Individual Performance					EPD's				
BW	ADJ. WW	WR	ADJ. YW	YR	CED	BW	WW	MILK	YW
88	610	108	1141	107	3	1.9	44	24	79
Individual Performance					EPD's				
ADG	Act. IMF	REA/100 lbs	\$EN	\$M	\$W	\$F	\$G	\$B	
3.32	6.54	1.17	-1	56	40	56	41	97	

101 SINCLAIR RUSSELL 9RM2
REG: 19475205 | DOB: 02/14/19 | TATTOO: 9RM2

PBC 707 1M F0203#
Sinclair Pioneer 1RF1 16974985
N Bar Miss Emulous A404

N Bar Prime Time D806#
Sinclair Primrose 2P8 D011 17218795
N Bar Primrose 4324B

R R Rito 707#
Evocate Princess T
N Bar Emulation Ext Z52
N Bar Miss Emulous X3091#

Gardens Prime Time#
N Bar Miss Emulous A404
N Bar Emulation EXT#
Primrose N Bar 8881

Dam's
Production
WR: 6 @ 98
YR: 5 @ 99

Individual Performance					EPD's				
BW	ADJ. WW	WR	ADJ. YW	YR	CED	BW	WW	MILK	YW
93	597	105	1120	110	3	2.2	33	19	63
Individual Performance					EPD's				
ADG	Act. IMF	REA/100 lbs	\$EN	\$M	\$W	\$F	\$G	\$B	
3.45	6.83	1.04	15	46	21	55	39	94	

98 SINCLAIR LINE- RX 9RB16
REG: 19475237 | DOB: 02/15/19 | TATTOO: 9RB16

Sinclair Rito 2R1
Sinclair Rito 4RX3 17830569
Sinclair Q Mother 1XX13 7R4

Sinclair XX 8X28
Sinclair K Bty 1TX11 8XE8 16937487
Sinclair K Bty 8XE8 5R2

Rito Revolve OR5
N Bar Miss Emulous A404
Sinclair Emulation XXP
Sinclair Q Mother 7R4 E008

N Bar Emulation EXT#
N Bar Miss Emulous X3091#
Sinclair Excellency 5X25
Sinclair K Bty 5R2 J208

Dam's
Production
WR: 6 @ 102
YR: 6 @ 102

Individual Performance					EPD's				
BW	ADJ. WW	WR	ADJ. YW	YR	CED	BW	WW	MILK	YW
60	592	105	1038	103	13	-3.7	34	16	57
Individual Performance					EPD's				
ADG	Act. IMF	REA/100 lbs	\$EN	\$M	\$W	\$F	\$G	\$B	
2.95	5.58	1.13	14	68	30	25	26	51	



Grandam to Lot 101 | N Bar Primrose 4324B



102 SINCLAIR RUSSELL 9RM6
REG: 19597141 | DOB: 02/21/19 | TATTOO: 9RM6

PBC 707 1M F0203#
Sinclair Pioneer 1RF1 16974985
N Bar Miss Emulous A404

Sinclair Emulation Exp 7F3
Sinclair Blkbird 9FH2 7PV6 16349479
Sinclair Blkbird 7PV6 G238

R R Rito 707#
Evocate Princess T
N Bar Emulation Ext Z52
N Bar Miss Emulous X3091#
Emulation N Bar 5522#
N Bar Nalie B44
Sinclair Net Present Value#
N Bar Blackbird Z1007

Dam's
Production
WR: 6 @ 107
YR: 4 @ 102

Individual Performance					EPD's				
BW	ADJ. WW	WR	ADJ. YW	YR	CED	BW	WW	MILK	YW
66	599	104	1071	113	12	-2.1	30	22	54
Individual Performance					\$ Values				
ADG	Act. IMF	REA/100 lbs	\$EN	\$M	\$W	\$F	\$G	\$B	
3.08	4.57	1.11	12	46	31	40	28	67	

105 SINCLAIR GRASS RANGE 9XG8
REG: 19475152 | DOB: 03/16/19 | TATTOO: 9XG8

N Bar Emulation EXT#
Sinclair Exquisite 6X4 18505959
Sinclair M Emulous 4ET1 D47#

Sinclair Broker 3RC33
Sinclair Lady Ida 6K27 3007 18487770
Sinclair Lady Ida 3007 OXM13

Emulation N Bar 5522#
N Bar Primrose 2424
N Bar Explosion TNT#
N Bar Miss Emulous B514
Sinclair Entrepreneur 8R101
Sinclair Lady Ida 8XV12 C52#
Basin Rainmaker 914A
Sinclair Lady Ida OXM13

Dam's
Production
WR: 2 @ 107
YR: 2 @ 98

Individual Performance					EPD's				
BW	ADJ. WW	WR	ADJ. YW	YR	CED	BW	WW	MILK	YW
86	607	107	1050	98	2	.9	34	26	57
Individual Performance					\$ Values				
ADG	Act. IMF	REA/100 lbs	\$EN	\$M	\$W	\$F	\$G	\$B	
2.77	6.50	1.17	10	60	37	39	35	75	

103 SINCLAIR RIGHT TIME 9NT1
REG: 19475299 | DOB: 02/22/19 | TATTOO: 9NT1

Sinclair In Time 9RT12
Sinclair Right Time 6NR1 18496127
Sinclair Primrose 1TL3 9XV1#

Sinclair Rito 2R1
Sinclair K Bty 5RX21 0F1 18365964
Sinclair K Bty 0F1 2V3

Leachman Right Time#
N Bar Enchantress 4908#
Sinclair Timeless 8BA4#
Sinclair Primrose 9XV1 A14
Rito Revolve ORS
N Bar Miss Emulous A404
Emulation N Bar 5522#
N Bar Kinochtry Bty SCC 2V3#

Dam's
Production
WR: 2 @ 99
YR: 1 @ 113

Individual Performance					EPD's				
BW	ADJ. WW	WR	ADJ. YW	YR	CED	BW	WW	MILK	YW
85	617	109	1142	113	6	-1.0	39	21	66
Individual Performance					\$ Values				
ADG	Act. IMF	REA/100 lbs	\$EN	\$M	\$W	\$F	\$G	\$B	
3.46	5.90	1.13	8	72	38	29	30	59	

106 SINCLAIR EMULATION 9XA17
REG: 19597143 | DOB: 02/25/19 | TATTOO: 9XA17

N Bar Emulation EXT#
Sinclair Exquisite 6X2 18505958
Sinclair Ms Emulous 7RT5

Sinclair Emulation 2A10
Sinclair Lady Ida 7AS0 55X8 19516507
Sinclair Lady Ida 55X8 5PV38

Emulation N Bar 5522#
N Bar Primrose 2424
Leachman Right Time#
N Bar Miss Emulous X3091#
Emulation 31#
N Bar Enchantress WP F3619
Sinclair Vision 3SX12
Sinclair Lady Ida 5PV38 B154

Dam's
Production
WR: 1 @ 103
YR: 1 @ 104

Individual Performance					EPD's				
BW	ADJ. WW	WR	ADJ. YW	YR	CED	BW	WW	MILK	YW
68	592	103	987	104	9	-1.3	25	24	38
Individual Performance					\$ Values				
ADG	Act. IMF	REA/100 lbs	\$EN	\$M	\$W	\$F	\$G	\$B	
2.57	4.87	1.30	14	56	29	38	25	62	

104 SINCLAIR RITO 9RG5
REG: 19602921 | DOB: 03/23/19 | TATTOO: 9RG5

Sinclair Entrepreneur 8R101
Sinclair Broker 6RC2 18487813
Sinclair Blkbird 9X59 2459#

Sinclair IN Time 6BT39
Sinclair Lady Ida 1BA16 7P15 16937484
Sinclair Lady Ida 7P15 5BT13

R R Rito 707#
N Bar Kinochtry Beauty Z1925
N Bar Emulation EXT#
Ideal 2459 of 6807 8351
BT Right Time 24J#
N Bar Miss Emulous A404
N Bar Prime Time D806#
Sinclair Lady Ida 5BT13

Dam's
Production
WR: 7 @ 106
YR: 6 @ 101

Individual Performance					EPD's				
BW	ADJ. WW	WR	ADJ. YW	YR	CED	BW	WW	MILK	YW
92	607	107	1063	97	2	1.5	35	24	54
Individual Performance					\$ Values				
ADG	Act. IMF	REA/100 lbs	\$EN	\$M	\$W	\$F	\$G	\$B	
2.81	5.56	1.28	11	48	36	36	37	73	

107 SINCLAIR EMULATION 9XF7
REG: 19475348 | DOB: 03/26/19 | TATTOO: 9XF7

Sinclair Emulation XXP
Sinclair X-Plus 6XX5 18506487
Sinclair Ms Emulous 8F12

Sinclair Net Present Value#
Sinclair K Bty 3U6 1JP4 17451902
Sinclair K Bty 1JP4 6X33

N Bar Emulation EXT#
N Bar Primrose Y3051#
Emulation N Bar 5522#
N Bar Miss Emulous A404
N Bar Prime Time D806#
Ideal 4465 of 6807 4286
Dunlouse Jipsej Earl E161#
Sinclair K Bty 6X33 A3

Dam's
Production
WR: 4 @ 102
YR: 2 @ 100

Individual Performance					EPD's				
BW	ADJ. WW	WR	ADJ. YW	YR	CED	BW	WW	MILK	YW
80	612	108	1130	106	9	-.8	37	23	63
Individual Performance					\$ Values				
ADG	Act. IMF	REA/100 lbs	\$EN	\$M	\$W	\$F	\$G	\$B	
3.24	5.48	1.19	10	81	38	40	29	69	



108 SINCLAIR EMULATION 9XF4
REG: 19475349 | DOB: 03/18/19 | TATTOO: 9XF4

Sinclair Emulation XXP
Sinclair X-Plus 6XX5 18506487
Sinclair Ms Emulous 8F12

N Bar Emulation EXT#
N Bar Primrose Y3051#
Emulation N Bar 5522#
N Bar Miss Emulous A404

Dam's
Production
WR: 4 @ 108
YR: 4 @ 101

Individual Performance					EPD's				
BW	ADJ. WW	WR	ADJ. YW	YR	CED	BW	WW	MILK	YW
85	599	106	1013	100	3	.2	34	21	58
Individual Performance					\$ Values				
ADG	Act. IMF	REA/100 lbs	\$EN	\$M	\$W	\$F	\$G	\$B	
2.73	4.81	1.08	13	62	31	37	21	58	

111 SINCLAIR EMULATION 9OV2
REG: 19475344 | DOB: 03/03/19 | TATTOO: 9OV2

Sinclair Emperor OXT51
Sinclair Emperor 6X02 18486466
Sinclair Ms Emulous 2V20 A40

Sinclair Extra 4X13#
Sinclair Blkbird 70C10 J472
N Bar Emulation Ext A1747
N Bar Miss Emulous X3091#

Dam's
Production
WR: 2 @ 105
YR: 1 @ 93

Individual Performance					EPD's				
BW	ADJ. WW	WR	ADJ. YW	YR	CED	BW	WW	MILK	YW
75	608	107	942	93	9	-1.4	32	19	51
Individual Performance					\$ Values				
ADG	Act. IMF	REA/100 lbs	\$EN	\$M	\$W	\$F	\$G	\$B	
2.21	5.21	1.33	14	73	30	27	27	54	

109 SINCLAIR BOB 9BX1
REG: 19475404 | DOB: 03/10/19 | TATTOO: 9BX1

Sinclair Emulation XXP
Sinclair X-Plus 4XX54 17821742
Sinclair Lady Ida 8XV12 C52#

Emulation 31#
Sinclair K Bty 3A23 1BA18 17526794
Sinclair K Bty 1BA18 7FE6

N Bar Emulation EXT#
N Bar Primrose Y3051#
N Bar Emulation Ext V722
N Bar Lady Ida Z1453

Dam's
Production
WR: 5 @ 99
YR: 3 @ 102

Individual Performance					EPD's				
BW	ADJ. WW	WR	ADJ. YW	YR	CED	BW	WW	MILK	YW
92	597	105	1063	105	0	1.2	39	23	68
Individual Performance					\$ Values				
ADG	Act. IMF	REA/100 lbs	\$EN	\$M	\$W	\$F	\$G	\$B	
3.07	5.44	1.19	8	59	37	62	36	98	

112 SINCLAIR ELATION 9SG5
REG: 19475313 | DOB: 02/28/19 | TATTOO: 9SG5

Sinclair Vision 3SX12
Sinclair Elation 6SX1 18488262
Sinclair C Pride 2G72 7X34

Sinclair Vision X 8S7
Sinclair K Bty OF1 2V3
Sinclair Grass Master#
Sinclair C Pride 7X34 K325#

Dam's
Production
WR: 2 @ 102
YR: 2 @ 100

Individual Performance					EPD's				
BW	ADJ. WW	WR	ADJ. YW	YR	CED	BW	WW	MILK	YW
79	613	108	1053	104	6	-1.2	34	22	62
Individual Performance					\$ Values				
ADG	Act. IMF	REA/100 lbs	\$EN	\$M	\$W	\$F	\$G	\$B	
2.90	5.01	1.12	10	70	33	39	25	64	

110 SINCLAIR CLOUD PEAK 9ON4
REG: 19475119 | DOB: 03/16/19 | TATTOO: 9ON4

Basin Rainmaker 654X#
Sinclair Cloud Peak 504 18313179
Sinclair Eriskay 2N1 7883#

Sinclair Emulation XXP
Sinclair Nalie 4XX19 9JP4 17821741
Sinclair Nalie 9JP4 7F1#

N Bar Emulation EXT#
N Bar Primrose Y3051#
Dunlouse Jipsej Earl E161#
Sinclair Nalie 7F1 D17

Dam's
Production
WR: 3 @ 103
YR: 2 @ 102

Individual Performance					EPD's				
BW	ADJ. WW	WR	ADJ. YW	YR	CED	BW	WW	MILK	YW
84	582	103	1028	96	7	-.3	34	28	59
Individual Performance					\$ Values				
ADG	Act. IMF	REA/100 lbs	\$EN	\$M	\$W	\$F	\$G	\$B	
2.79	5.50	1.27	8	67	40	42	26	68	

113 SINCLAIR EMULATION 9FF15
REG: 19475266 | DOB: 03/07/19 | TATTOO: 9FF15

Sinclair X-Changer 2FE9
Sinclair Piney Creek 5FV5 18295789
Sinclair Ms Emulous 8F12

Sinclair Emulation 5522 XP#
Sinclair Lady Ida 5FE11 8PV8 18152694
Sinclair Lady Ida 8PV8 04F3

Sinclair Emulation 5522 XP#
N Bar Emulation N Bar 5522#
N Bar Primrose Y3051#
Sinclair Net Present Value#
Sinclair Lady Ida 04F3 B154

Dam's
Production
WR: 3 @ 103
YR: 1 @ 106

Individual Performance					EPD's				
BW	ADJ. WW	WR	ADJ. YW	YR	CED	BW	WW	MILK	YW
80	589	104	1077	106	6	-.3	35	18	59
Individual Performance					\$ Values				
ADG	Act. IMF	REA/100 lbs	\$EN	\$M	\$W	\$F	\$G	\$B	
3.21	5.00	1.12	15	71	30	22	38	60	



Dam of Sinclair Cloud Peak 504 | Sinclair Eriskay 2N1 7883

114 SINCLAIR EMULATION 9FF19
REG: 19475269 | DOB: 03/15/19 | TATTOO: 9FF19

Sinclair X-Changer 2FE9
Sinclair Piney Creek 5FV5 18295789
Sinclair Ms Emulous 8F12

Sinclair Vision 3SX12
Sinclair Blkbird 6SX13 4X5 18488243
Sinclair Blkbird 4X5 7RL33

Sinclair Emulation 5522 XP#
Sinclair Blackie 7V3 2P18
Emulation N Bar 5522#
N Bar Miss Emulous A404

Dam's
Production
WR: 2 @ 111
YR: 1 @ 109

Individual Performance					EPD's				
BW	ADJ. WW	WR	ADJ. YW	YR	CED	BW	WW	MILK	YW
70	606	107	1100	109	11	-2.1	30	21	52
Individual Performance					\$ Values				
ADG	Act. IMF	REA/100 lbs	\$EN	\$M	\$W	\$F	\$G	\$B	
3.26	8.30	1.07	13	70	30	13	45	58	

CALVING EASE GENETICS BACKED BY PERFORMANCE



115 SINCLAIR EMULATION 9FF36

REG: 19475267 | DOB: 03/11/19 | TATTOO: 9FF36

Sinclair X-Changer 2FE9
Sinclair Piney Creek 5FV5¹⁸²⁹⁵⁷⁸⁹
Sinclair Ms Emulous 8F12

Sinclair Emulation 5522 XP#
Sinclair Blackie 7V3 2P18
Emulation N Bar 5522#
N Bar Miss Emulous A404

Dam's
Production
WR: 3 @ 102
YR: 1 @ 97

O C C Great Plains 943G#
Sinclair Lady 50C4 3TL39¹⁸¹⁵⁵⁶²³
Sinclair Lady 3TL39 1X32

N Bar Emulation EXT#
Dixie Erica of C H 1019
Sinclair Timeless 8BA4#
Sinclair Lady 1X32 3T9

Individual Performance					EPD's				
BW	ADJ. WW	WR	ADJ. YW	YR	CED	BW	WW	MILK	YW
81	586	104	1032	97	8	-1.3	28	20	44
Individual Performance					\$ Values				
ADG	Act. IMF	REA/100 lbs	\$EN	\$M	\$W	\$F	\$G	\$B	
2.79	7.22	1.14	17	69	27	14	33	47	



119 SINCLAIR ROLLIN HILLS 9KF2

REG: 19475096 | DOB: 02/22/19 | TATTOO: 9KF2

Sinclair Broker 3RC33
Sinclair Rollin Coal 5K2¹⁸¹⁵²⁶²⁵
Sinclair Ms Emulous 1FE23

Sinclair Entrepreneur 8R101
Sinclair Lady Ida 8XV12 C52#
Sinclair Emulation 5522 XP#
Sinclair Ms Emulous 8F11

Dam's
Production
WR: 5 @ 108
YR: 4 @ 104

Basin Rainmaker 914A
Sinclair Blkbird 3006 OXM1#¹⁷⁵²²¹⁴⁶
Sinclair Blkbird OXM1 8XV8

Basin Rainmaker 654X#
Basin Blackbird 584Y#
N Bar Prime Time D806#
Sinclair Blkbird 8XV8 5P21

Individual Performance					EPD's				
BW	ADJ. WW	WR	ADJ. YW	YR	CED	BW	WW	MILK	YW
68	569	101	1035	103	12	-3.7	27	25	51
Individual Performance					\$ Values				
ADG	Act. IMF	REA/100 lbs	\$EN	\$M	\$W	\$F	\$G	\$B	
3.07	6.11	1.23	10	57	31	33	37	70	



116 SINCLAIR ROLLIN HILLS 9KF10

REG: 19475091 | DOB: 03/09/19 | TATTOO: 9KF10

Sinclair Broker 3RC33
Sinclair Rollin Coal 5K2¹⁸¹⁵²⁶²⁵
Sinclair Ms Emulous 1FE23

Sinclair Entrepreneur 8R101
Sinclair Lady Ida 8XV12 C52#
Sinclair Emulation 5522 XP#
Sinclair Ms Emulous 8F11

Dam's
Production
WR: 6 @ 102
YR: 4 @ 106

N Bar Prime Time D806#
Sinclair C Pride 2P10 J355¹⁷²¹⁸⁷⁹⁷
N Bar Clova Pride F2839#

Gardens Prime Time#
N Bar Miss Emulous A404
N Bar Shadow X4124
N Bar Clova Pride 3626

Individual Performance					EPD's				
BW	ADJ. WW	WR	ADJ. YW	YR	CED	BW	WW	MILK	YW
74	601	106	1097	108	8	-2.4	35	20	61
Individual Performance					\$ Values				
ADG	Act. IMF	REA/100 lbs	\$EN	\$M	\$W	\$F	\$G	\$B	
3.27	5.81	1.13	11	42	34	31	32	63	



120 SINCLAIR ROLLIN HILLS 9KF31

REG: 19521265 | DOB: 03/05/19 | TATTOO: 9KF31

Sinclair Broker 3RC33
Sinclair Rollin Coal 5K2¹⁸¹⁵²⁶²⁵
Sinclair Ms Emulous 1FE23

Sinclair Entrepreneur 8R101
Sinclair Lady Ida 8XV12 C52#
Sinclair Emulation 5522 XP#
Sinclair Ms Emulous 8F11

Dam's
Production
WR: 3 @ 102
YR: 2 @ 102

Cole Creek Cedar Ridge 1V#
Sinclair Pride 5CR14 2188¹⁸²¹⁵⁶²⁵
Sitz Pride 2188

Cole Creek Black Cedar 46P#
Cole Creek Clovanada 49S#
N Bar Emulation EXT#
Sitz Pride 838#

Individual Performance					EPD's				
BW	ADJ. WW	WR	ADJ. YW	YR	CED	BW	WW	MILK	YW
74	596	101	1066	99	10	-2.1	29	23	51
Individual Performance					\$ Values				
ADG	Act. IMF	REA/100 lbs	\$EN	\$M	\$W	\$F	\$G	\$B	
3.10	5.24	1.16	12	51	31	37			



117 SINCLAIR ROLLIN HILLS 9KF30

REG: 19477692 | DOB: 03/03/19 | TATTOO: 9KF30

Sinclair Broker 3RC33
Sinclair Rollin Coal 5K2¹⁸¹⁵²⁶²⁵
Sinclair Ms Emulous 1FE23

Sinclair Entrepreneur 8R101
Sinclair Lady Ida 8XV12 C52#
Sinclair Emulation 5522 XP#
Sinclair Ms Emulous 8F11

Dam's
Production
WR: 5 @ 106
YR: 4 @ 106

Sinclair Emperor OXT1
Sinclair Primrose 3IJ3 ORS12#¹⁷⁵⁰⁶⁴⁵⁶
Sinclair Primrose ORS12 6X40

Sinclair Extra 4X13#
Sinclair Ruth 8A1 A78
Sinclair Standard Bearer
Sinclair Primrose 6X40 A14

Individual Performance					EPD's				
BW	ADJ. WW	WR	ADJ. YW	YR	CED	BW	WW	MILK	YW
73	605	110	1053	101	12	-3.7	33	20	54
Individual Performance					\$ Values				
ADG	Act. IMF	REA/100 lbs	\$EN	\$M	\$W	\$F	\$G	\$B	
2.95	6.17	1.23	13	59	34	25	35	60	



121 SINCLAIR ROLLIN HILLS 9KF19

REG: 19475092 | DOB: 03/22/19 | TATTOO: 9KF19

Sinclair Broker 3RC33
Sinclair Rollin Coal 5K2¹⁸¹⁵²⁶²⁵
Sinclair Ms Emulous 1FE23

Sinclair Entrepreneur 8R101
Sinclair Lady Ida 8XV12 C52#
Sinclair Emulation 5522 XP#
Sinclair Ms Emulous 8F11

Dam's
Production
WR: 2 @ 105
YR: 1 @ 104

Sinclair Entrepreneur 8R101
Sinclair Eriskay 2Z2 5E3¹⁷²⁴⁰⁹⁵³
Sinclair Eriskay 5E3 2N11#

R R Rito 707#
N Bar Kinochtry Beauty Z1925
N Bar Explosion#
Sinclair Eriskay 2N11 7883

Individual Performance					EPD's				
BW	ADJ. WW	WR	ADJ. YW	YR	CED	BW	WW	MILK	YW
83	616	109	1051	104	4	-5	34	22	59
Individual Performance					\$ Values				
ADG	Act. IMF	REA/100 lbs	\$EN	\$M	\$W	\$F	\$G	\$B	
2.87	5.74	1.23	6	38	33	34	34	68	



118 SINCLAIR ROLLIN HILLS 9KF12

REG: 19475107 | DOB: 03/11/19 | TATTOO: 9KF12

Sinclair Broker 3RC33
Sinclair Rollin Coal 5K2¹⁸¹⁵²⁶²⁵
Sinclair Ms Emulous 1FE23

Sinclair Entrepreneur 8R101
Sinclair Lady Ida 8XV12 C52#
Sinclair Emulation 5522 XP#
Sinclair Ms Emulous 8F11

Dam's
Production
WR: 4 @ 104
YR: 3 @ 102

Sinclair Emulation 2F7
Sinclair Blkcap 4FB1 1BA10¹⁷⁸³⁰⁵⁵⁰
Sinclair Blkcap 1BA10 5XA24

Emulation N Bar 5522#
N Bar Enchantress 4908#
Sinclair IN Time 6BT39
Sinclair Blkcap 5XA24 A46

Individual Performance					EPD's				
BW	ADJ. WW	WR	ADJ. YW	YR	CED	BW	WW	MILK	YW
76	629	111	1061	105	9	-2.5	34	21	53
Individual Performance					\$ Values				
ADG	Act. IMF	REA/100 lbs	\$EN	\$M	\$W	\$F	\$G	\$B	
2.85	5.31	1.30	12	48	39	16	35	50	



122 SINCLAIR ROLLIN HILLS 9KF7

REG: 19475101 | DOB: 03/06/19 | TATTOO: 9KF7

Sinclair Broker 3RC33
Sinclair Rollin Coal 5K2¹⁸¹⁵²⁶²⁵
Sinclair Ms Emulous 1FE23

Sinclair Entrepreneur 8R101
Sinclair Lady Ida 8XV12 C52#
Sinclair Emulation 5522 XP#
Sinclair Ms Emulous 8F11

Dam's
Production
WR: 3 @ 104
YR: 2 @ 102

Sinclair Timeless 8BA4#
Sinclair Ms Emulous 5TL40¹⁸¹⁵⁴⁰⁸⁸
Sinclair Ms Emulous 2ET2 D47

Sinclair IN Time 6BT39
Sinclair Blackbird 2P8 7079#
N Bar Explosion TNT#
N Bar Miss Emulous 8B54

Individual Performance					EPD's				
BW	ADJ. WW	WR	ADJ. YW	YR	CED	BW	WW	MILK	YW
67	581	103	1018	101	13	-4.8	28	25	51
Individual Performance					\$ Values				
ADG	Act. IMF	REA/100 lbs	\$EN	\$M	\$W	\$F	\$G	\$B	
2.88	6.04	1.10	10	54	33	16	26	42	

REGISTERED ANGUS HEIFERS

About this year's heifer offering: We hand-picked 40 registered females to offer you this year selected primarily from their pedigree and performance.

All heifers will be vaccinated with Virashield 6 VL5 Somnus and administered pour-on.

2 straws of readily available semen will be provided to buyers of each registered female.

125 SINCLAIR ERICA 9L12 5FV9

REG: 19475261 | DOB: 02/16/19 | TATTOO: 9L12

Sinclair Patriarch 3B47
Sinclair Plains Boss 5B02 18152044
 Sinclair Lady Ida 7V19 04F3

Sinclair X-Changer 2FE9
Sinclair Erica 5FV9 8X42 18365960
 Sinclair Erica 8X42 A18

Sinclair Boss#
 Sinclair Lady Ida 70C7 2V11
 N Bar Emulation Ext A1747
 Sinclair Lady Ida 04F3 B154
 Sinclair Emulation 5522 XP#
 Sinclair Blackie 7V3 2P18
 N Bar Emulation EXT#
 Rito Majesty 4A18 of F0203

Individual Performance					EPD's				
BW	ADJ. WW	WR	ADJ. YW	YR	CED	BW	WW	MILK	YW
78	503	96	799	106	-1	2.3	46	17	87
Dam's Production			Mat		\$ Values				
WR	YR	SEN	SM	SW	SF	SG	SB		
2 @ 94			2 @ 98	6	55	30	76	38	114

123 SINCLAIR DONNA 9OV4 0XT31

REG: 19475337 | DOB: 03/12/19 | TATTOO: 9OV4

Sinclair Emperor 0XT51
Sinclair Emperor 6X02 18486466
 Sinclair Ms Emulous 2V20 A40

Sinclair Extra 4X13#
Sinclair Donna 0XT31 80A10 16657594
 Sinclair Donna 80A10 3J28

Sinclair Extra 4X13#
 Sinclair Blkbird 70C10 J472
 N Bar Emulation Ext A1747
 N Bar Miss Emulous X3091#
 N Bar Emulation EXT#
 N Bar Lady Ida S C C 2P37
 N Bar Line 2 S C C 2012
 Sinclair Donna 3J28 B817#

Individual Performance					EPD's				
BW	ADJ. WW	WR	ADJ. YW	YR	CED	BW	WW	MILK	YW
69	530	100	832	110	9	-7	38	20	76
Dam's Production			Mat		\$ Values				
WR	YR	SEN	SM	SW	SF	SG	SB		
8 @ 96			5 @ 101	4	65	31	75	38	113

126 SINCLAIR BLKCAP 9L14 8A7

REG: 19475254 | DOB: 02/22/19 | TATTOO: 9L14

Sinclair Patriarch 3B47
Sinclair Plains Boss 5B02 18152044
 Sinclair Lady Ida 7V19 04F3

Emulation 31#
Sinclair Blkcap 8A7 5PV51 16027261
 Sinclair Blackcap 5PV51 2D40

Sinclair Boss#
 Sinclair Lady Ida 70C7 2V11
 N Bar Emulation Ext A1747
 Sinclair Lady Ida 04F3 B154
 F C R Elation Lad 652
 Miss Emulous 243
 Sinclair Net Present Value#
 Sinclair Blackcap 2D40 7856

Individual Performance					EPD's				
BW	ADJ. WW	WR	ADJ. YW	YR	CED	BW	WW	MILK	YW
78	558	105	785	104	5	.0	39	19	69
Dam's Production			Mat		\$ Values				
WR	YR	SEN	SM	SW	SF	SG	SB		
8 @ 99			8 @ 99	14	61	34	66	36	101

124 SINCLAIR MS EMULOUS 9RM3

REG: 19475204 | DOB: 02/15/19 | TATTOO: 9RM3

PBC 707 1M F0203#
Sinclair Pioneer 1RF1 16974985
 N Bar Miss Emulous A404

N Bar Prime Time D806#
Sinclair Ms Emulous 2P6 D47 17218793
 N Bar Miss Emulous B514

R R Rito 707#
 Evocate Princess T
 N Bar Emulation Ext Z52
 N Bar Miss Emulous X3091#
 Gardens Prime Time#
 N Bar Miss Emulous A404
 N Bar Emulation Extra V129
 N Bar Miss Emulous Y3502A

Individual Performance					EPD's				
BW	ADJ. WW	WR	ADJ. YW	YR	CED	BW	WW	MILK	YW
72	546	104	770	102	9	-7	28	21	53
Dam's Production			Mat		\$ Values				
WR	YR	SEN	SM	SW	SF	SG	SB		
6 @ 98			4 @ 104	15	46	25	48	31	79

127 SINCLAIR K BTY 9FV2 1XT3

REG: 19475226 | DOB: 02/15/19 | TATTOO: 9FV2

Sinclair Emulation 5522 XP#
Sinclair X-Changer 2FE9 17209203
 Sinclair Blackie 7V3 2P18

Sinclair Extra 4X13#
Sinclair K Bty 1XT3 7XT64 16861352
 Sinclair K Bty 7XT64 J009

Emulation N Bar 5522#
 N Bar Primrose Y3051#
 N Bar Emulation Ext A1747
 Sinclair Blackie 2P18 4452
 N Bar Emulation EXT#
 N Bar Lady Ida S C C 2P37
 Sinclair Extra 4X13#
 N Bar Kinochry Beauty J009

Individual Performance					EPD's				
BW	ADJ. WW	WR	ADJ. YW	YR	CED	BW	WW	MILK	YW
61	494	94	768	102	10	-1.5	34	16	63
Dam's Production			Mat		\$ Values				
WR	YR	SEN	SM	SW	SF	SG	SB		
7 @ 93			3 @ 100	15	60	26	57	27	84



Grandam to Lot 124 | N Bar Miss Emulous B514 (D47)

128 SINCLAIR LADY IDA 9FV10 8PV8

REG: 19475219 | DOB: 03/12/19 | TATTOO: 9FV10

Sinclair Emulation 5522 XP#
Sinclair X-Changer 2FE9 17209203
 Sinclair Blackie 7V3 2P18

Sinclair Net Present Value#
Sinclair Lady Ida 8PV8 04F3 16027325
 Sinclair Lady Ida 04F3 B154

Emulation N Bar 5522#
 N Bar Primrose Y3051#
 N Bar Emulation Ext A1747
 Sinclair Blackie 2P18 4452
 N Bar Prime Time D806#
 Ideal 4465 of 6807 4286
 Emulation N Bar 5522#
 N Bar Lady Ida X2912

Individual Performance					EPD's				
BW	ADJ. WW	WR	ADJ. YW	YR	CED	BW	WW	MILK	YW
71	538	101	799	105	7	-8	39	19	70
Dam's Production			Mat		\$ Values				
WR	YR	SEN	SM	SW	SF	SG	SB		
10 @ 95			7 @ 98	12	47	34	45	34	79

129 SINCLAIR K BTY 9FV18 0F1
 REG: 19475209 | DOB: 04/07/19 | TATTOO: 9FV18

Sinclair Emulation 5522 XP#
Sinclair X-Changer 2FE9 17209203
 Sinclair Blackie 7V3 2P18

Emulation N Bar 5522#
Sinclair K Bty 0F1 2V3 16690978
 N Bar Kinochtry Bty SCC 2V3#

Emulation N Bar 5522#
 N Bar Primrose Y3051#
 N Bar Emulation Ext A1747
 Sinclair Blackie 2P18 4452

Emulation 31#
 Ankony 8F78 Lass 8F275
 N Bar Emulation Ext V722
 N Bar Kinochtry Beauty Y3881

Individual Performance					EPD's				
BW	ADJ. WW	WR	ADJ. YW	YR	CED	BW	WW	MILK	YW
79	605	114			3	.8	46	19	74
Dam's Production				Mat	\$ Values				
WR	YR			\$EN	\$M	\$W	\$F	\$G	\$B
6 @ 105		4 @ 100		9	55	42	32	26	58



Grandam to Lot 129 | N Bar Kinochtry Bty SCC 2V3

131 SINCLAIR LADY IDA 9XA5 5FE20
 REG: 19475135 | DOB: 03/08/19 | TATTOO: 9XA5

N Bar Emulation EXT#
Sinclair Exquisite 6X2 18505958
 Sinclair Ms Emulous 7RT5

Sinclair Emulation 5522 XP#
Sinclair Lady Ida 5FE20 18152705
 Sinclair Lady Ida 5PV37 B154

Emulation N Bar 5522#
 N Bar Primrose 2424
 Leachman Right Time#
 N Bar Miss Emulous X3091#
 Emulation N Bar 5522#
 N Bar Primrose Y3051#
 Sinclair Net Present Value#
 N Bar Lady Ida X2912

Individual Performance					EPD's				
BW	ADJ. WW	WR	ADJ. YW	YR	CED	BW	WW	MILK	YW
69	538	103	800	107	9	-1.1	31	20	52
Dam's Production				Mat	\$ Values				
WR	YR			\$EN	\$M	\$W	\$F	\$G	\$B
2 @ 99		2 @ 103		14	59	29	41		



Great Grandam to Lot 131, 138 & 158 |
 N Bar Lady Ida X2912 (B154)

130 SINCLAIR PRIMROSE 9FV20
 REG: 19475216 | DOB: 04/08/19 | TATTOO: 9FV20

Sinclair Emulation 5522 XP#
Sinclair X-Changer 2FE9 17209203
 Sinclair Blackie 7V3 2P18

Sinclair Grass Master#
Sinclair Primrose 2G11 6D6 17199687
 Sinclair Primrose 6D6 2S19

Emulation N Bar 5522#
 N Bar Primrose Y3051#
 N Bar Emulation Ext A1747
 Sinclair Blackie 2P18 4452

BT Right Time 24J#
 N Bar Primrose Y3051#
 N Bar Double Time D0116
 N Bar Primrose S C C 2S19

Individual Performance					EPD's				
BW	ADJ. WW	WR	ADJ. YW	YR	CED	BW	WW	MILK	YW
84	511	96			-4	3.6	41	22	68
Dam's Production				Mat	\$ Values				
WR	YR			\$EN	\$M	\$W	\$F	\$G	\$B
6 @ 103		3 @ 96		7	57	31	49	21	70



132 SINCLAIR BLKBIRD 9V8 3RC36
 REG: 19477778 | DOB: 02/18/19 | TATTOO: 9V8

N Bar Emulation EXT#
N Bar Emulation Ext A1747 12811512
 N Bar Clova Pride U3031

Sinclair Entrepreneur 8R101
Sinclair Blkbird 3RC36 8XE1 17539047
 Sinclair Blkbird 8XE1 6PU4

Emulation N Bar 5522#
 N Bar Primrose 2424
 N Bar Trademark 1949
 N Bar Clova Pride 7356
 R R Rito 707#
 N Bar Kinochtry Beauty Z1925
 Sinclair Excellency SX25
 Sinclair Blkbird 6PU4 G229

Individual Performance					EPD's				
BW	ADJ. WW	WR	ADJ. YW	YR	CED	BW	WW	MILK	YW
70	530	103	776	104	4	.7	44	15	75
Dam's Production				Mat	\$ Values				
WR	YR			\$EN	\$M	\$W	\$F	\$G	\$B
5 @ 90		4 @ 96		6	53	33	72	35	108



Great Grandam | N Bar Blackbird Z1817 (G229)

133 SINCLAIR LADY 9V6 3RC23
 REG: 19472528 | DOB: 02/23/19 | TATTOO: 9V6

N Bar Emulation EXT#
N Bar Emulation Ext A1747 12811512
 N Bar Clova Pride U3031

Emulation N Bar 5522#
 N Bar Primrose 2424
 N Bar Trademark 1949
 N Bar Clova Pride 7356
 R R Rito 707#
 N Bar Kinochtry Beauty Z1925
 N Bar Emulation EXT#
 Sinclair Lady 2P60 4465

Sinclair Entrepreneur 8R101
Sinclair Lady 3RC23 9X17 12510295
 Sinclair Lady 9X17 2P60

Individual Performance					EPD's				
BW	ADJ. WW	WR	ADJ. YW	YR	CE	BW	WW	MILK	YW
67	538	103	773	103	6	-2	44	18	75
Dam's Production				Mat	\$ Values				
WR	YR	SEN	SM	SW	SF	SG	SB		
5 @ 99	4 @ 103	0	52	38	77	39	116		



Grandam to Lot 133 | Sinclair Lady 2P60

135 SINCLAIR LADY IDA 9WC13
 REG: 19521266 | DOB: 02/24/19 | TATTOO: 9WC13

Wandering CRK Dynasty JRM 2F#
Sinclair Dynasty 3WCD7 17790047
 Sinclair Eriskay 2N1 7883#

Eston Encounter M G 5571
 Rose G V 37U
 D H D Traveler 6807#
 Papa Eriskay 7883
 R R Rito 707#
 N Bar Kinochtry Beauty Z1925
 Sinclair Extra 4X13#
 Sinclair Lady Ida 70C7 2V11

Sinclair Entrepreneur 8R101
Sinclair Lady Ida 5RC14 18154115
 Sinclair Lady Ida 0XT54 70C7

Individual Performance					EPD's				
BW	ADJ. WW	WR	ADJ. YW	YR	CE	BW	WW	MILK	YW
66	580	100	799	100	12	-1.8	29	14	51
Dam's Production				Mat	\$ Values				
WR	YR	SEN	SM	SW	SF	SG	SB		
2 @ 99	1 @ 100	17	47	19	47	18	66		



Great Grandam to Lot 135 | Sinclair Lady Ida 70C7 2V11

134 SINCLAIR C PRIDE 9V4 2G72
 REG: 19479755 | DOB: 02/22/19 | TATTOO: 9V4

N Bar Emulation EXT#
N Bar Emulation Ext A1747 12811512
 N Bar Clova Pride U3031

Emulation N Bar 5522#
 N Bar Primrose 2424
 N Bar Trademark 1949
 N Bar Clova Pride 7356
 BT Right Time 24#
 N Bar Primrose Y3051#
 N Bar Emulation EXT#
 N Bar Clova Pride F1100

Sinclair Grass Master#
Sinclair C Pride 2G72 7X34 17240958
 Sinclair C Pride 7X34 K325#

Individual Performance					EPD's				
BW	ADJ. WW	WR	ADJ. YW	YR	CE	BW	WW	MILK	YW
71	488	93	763	101	5	.5	38	23	72
Dam's Production				Mat	\$ Values				
WR	YR	SEN	SM	SW	SF	SG	SB		
6 @ 96	5 @ 99	-3	31	35	73	34	108		



Grandam to Lot 134 and foundation grandam of 9BT1 | Sinclair C Pride 7X34 K325#

136 SINCLAIR B MAID 9WC8 0X13
 REG: 19475402 | DOB: 03/18/19 | TATTOO: 9WC8

Wandering CRK Dynasty JRM 2F#
Sinclair Dynasty 3WCD7 17790047
 Sinclair Eriskay 2N1 7883#

Eston Encounter M G 5571
 Rose G V 37U
 D H D Traveler 6807#
 Papa Eriskay 7883
 Emulation N Bar 5522#
 N Bar Primrose 2424
 Q A S Traveler 23-4#
 Bemindful Maid D H D 0807#

N Bar Emulation EXT#
Sinclair B Maid 0X13 507E 16715242
 C U Bemindful Maid 507E

Individual Performance					EPD's				
BW	ADJ. WW	WR	ADJ. YW	YR	CE	BW	WW	MILK	YW
72	557	107	759	101	10	-.5	28	17	47
Dam's Production				Mat	\$ Values				
WR	YR	SEN	SM	SW	SF	SG	SB		
8 @ 96	7 @ 97	16	31	21	43	20	64		



Grandam to Lot 136 | CU Bemindful Maid 507E

137 SINCLAIR MS EMULOUS 9RB5
 REG: 19475246 | DOB: 03/07/19 | TATTOO: 9RB5

Sinclair Rito 2R1
Sinclair Rito 4RX3 17830569
 Sinclair Q Mother 1XX13 7R4

N Bar Emulation Ext A1747
Sinclair Ms Emulous 2V25 D80 17251790
 N Bar Miss Emulous A404

Rito Revolve OR5
 N Bar Miss Emulous A404
 Sinclair Emulation XXP
 Sinclair Q Mother 7R4 E008
 N Bar Emulation EXT#
 N Bar Clova Pride U3031
 N Bar Emulation Ext Z52
 N Bar Miss Emulous X3091#

Individual Performance					EPD's				
BW	ADJ. WW	WR	ADJ. YW	YR	CED	BW	WW	MILK	YW
75	500	96	782	104	8	-7	30	15	58
Dam's Production				Mat	\$ Values				
WR	YR	SEN	SM	SW	SF	SG	SB		
6 @ 94	4 @ 101	15	49	18	44	42	86		



Grandam to Lot 137 | N Bar Miss Emulous A404 (D80)

140 SINCLAIR LADY 9BA1 7ON5
 REG: 19472573 | DOB: 01/26/19 | TATTOO: 9BA1

BT Right Time 24J#
Sinclair IN Time 6BT39 15366581
 N Bar Miss Emulous A404

Sinclair Cloud Peak 504
Sinclair Lady 7ON5 3XX25 18826310
 Sinclair Lady 3XX25 9RN4

Leachman Right Time#
 Sitz Everelda Entense 1905
 N Bar Emulation Ext Z52
 N Bar Miss Emulous X3091#
 Basin Rainmaker 654X#
 Sinclair Eriskay 2N1 7883#
 Sinclair Emulation XXP
 Sinclair Lady 9RN4 1C8

Individual Performance					EPD's				
BW	ADJ. WW	WR	ADJ. YW	YR	CED	BW	WW	MILK	YW
63	500	96	775	103	11	-2.3	24	25	49
Dam's Production				Mat	\$ Values				
WR	YR	SEN	SM	SW	SF	SG	SB		
1 @ 96	1 @ 103	11	47	26	54				

141 SINCLAIR DONNA 9BA4 7UD4
 REG: 19472578 | DOB: 02/02/19 | TATTOO: 9BA4

BT Right Time 24J#
Sinclair IN Time 6BT39 15366581
 N Bar Miss Emulous A404

Sinclair Deliverance 5U38
Sinclair Donna 7UD4 2SX2 18829770
 Sinclair Donna 2SX2 ORW14#

Leachman Right Time#
 Sitz Everelda Entense 1905
 N Bar Emulation Ext Z52
 N Bar Miss Emulous X3091#
 Sinclair Executive 9XV2
 Sinclair Delia 2F6 404
 Sinclair Timeless 8BA4#
 Sinclair Donna ORW14 7RD18

Individual Performance					EPD's				
BW	ADJ. WW	WR	ADJ. YW	YR	CED	BW	WW	MILK	YW
60	507	95	769	101	12	-2.3	30	24	55
Dam's Production				Mat	\$ Values				
WR	YR	SEN	SM	SW	SF	SG	SB		
1 @ 95	1 @ 101	11	63	33	47				

138 SINCLAIR LADY 9PF1 4R1
 REG: 19478735 | DOB: 02/19/19 | TATTOO: 9PF1

Papa Optima 9818
Papa Forte 1921# 11620690
 Papa Envious Blackbird 8832

Rito Revolve OR5
Sinclair lady 4R1 7X25 17923627
 Sinclair Lady Ida 7X25 B154

Scotch Cap#
 Blackbird D H D 2816
 Papa Rito T Power D H D 6838
 Envious Blackbird of RR 7066
 R R Rito 707#
 Ideal 1456 of 8103 8114
 N Bar Emulation EXT#
 N Bar Lady Ida X2912

Individual Performance					EPD's				
BW	ADJ. WW	WR	ADJ. YW	YR	CED	BW	WW	MILK	YW
84	543	104	778	104	3	2.7	32	20	59
Dam's Production				Mat	\$ Values				
WR	YR	SEN	SM	SW	SF	SG	SB		
4 @ 96	2 @ 108	14	56	20	45	30	75		

142 SINCLAIR ENCHANTRESS 9BA14
 REG: 19472570 | DOB: 02/21/19 | TATTOO: 9BA14

BT Right Time 24J#
Sinclair IN Time 6BT39 15366581
 N Bar Miss Emulous A404

Sinclair Executive 9XV2
Sinclair Enchantress 6U65 18496906
 Sinclair Enchantress OR03#

Leachman Right Time#
 Sitz Everelda Entense 1905
 N Bar Emulation Ext Z52
 N Bar Miss Emulous X3091#
 N Bar Emulation Ext V722
 N Bar Primrose Y3051#
 Sinclair Pioneer 7RF4
 Sinclair Enchantress 6PV29

Individual Performance					EPD's				
BW	ADJ. WW	WR	ADJ. YW	YR	CED	BW	WW	MILK	YW
70	492	94	759	101	11	-2.4	27	23	50
Dam's Production				Mat	\$ Values				
WR	YR	SEN	SM	SW	SF	SG	SB		
2 @ 99	2 @ 103	13	59	29	34	33	67		

139 SINCLAIR PRIMROSE 9PF8 3XX48
 REG: 19486731 | DOB: 02/18/19 | TATTOO: 9PF8

Papa Optima 9818
Papa Forte 1921# 11620690
 Papa Envious Blackbird 8832

Sinclair Emulation XXP
Sinclair Primrose 3XX48 0A14 17518380
 Sinclair Primrose 0A14 8R5

Scotch Cap#
 Blackbird D H D 2816
 Papa Rito T Power D H D 6838
 Envious Blackbird of RR 7066
 N Bar Emulation EXT#
 N Bar Primrose Y3051#
 Emulation 31#
 Sinclair Primrose 8R5 4P87#

Individual Performance					EPD's				
BW	ADJ. WW	WR	ADJ. YW	YR	CED	BW	WW	MILK	YW
72	508	98	710	95	9	-1.0	27	21	50
Dam's Production				Mat	\$ Values				
WR	YR	SEN	SM	SW	SF	SG	SB		
5 @ 97	3 @ 101	15	60	24	47	32	79		

143 SINCLAIR LADY 9BA15 3RM21
 REG: 19472579 | DOB: 02/22/19 | TATTOO: 9BA15

BT Right Time 24J#
Sinclair IN Time 6BT39 15366581
 N Bar Miss Emulous A404

Sinclair Pioneer 1RF1
Sinclair Lady 3RM21 1A4 17534265
 Sinclair Lady 1A4 9JP22

Leachman Right Time#
 Sitz Everelda Entense 1905
 N Bar Emulation Ext Z52
 N Bar Miss Emulous X3091#
 PBC 707 1M F0203#
 N Bar Miss Emulous A404
 Emulation 31#
 Sinclair Lady 9JP22 5X23#

Individual Performance					EPD's				
BW	ADJ. WW	WR	ADJ. YW	YR	CED	BW	WW	MILK	YW
71	532	102	722	96	11	-2.5	25	24	37
Dam's Production				Mat	\$ Values				
WR	YR	SEN	SM	SW	SF	SG	SB		
2 @ 92	2 @ 103	15	62	31	26	22	48		

144 SINCLAIR LADY 9WG8 7F3
 REG: 19538390 | DOB: 03/20/19 | TATTOO: 9WG8

Sinclair Dynasty 3WCD7
Sinclair Dynasty 7WC17 18826235
 Sinclair Primrose 1G13 6E11#

Emulation N Bar 5522#
Sinclair Lady 7F3 0653 18841168
 Sinclair Lady 0653 4465

Wandering CRK Dynasty JRM 2F#
 Sinclair Eriskay 2N1 7883#
 Sinclair Grass Master#
 Sinclair Primrose 6E11 Z194

Emulation 31#
 Ankony 8F78 Lass 8F275
 N Bar Shadow X4124
 Ideal 4465 of 6807 4286

Individual Performance					EPD's				
BW	ADJ. WW	WR	ADJ. YW	YR	CED	BW	WW	MILK	YW
61	479	100	849	100	11	-2.2	32	20	55
Dam's Production				Mat		\$ Values			
WR	YR	SEN	SM	SW	SF	SG	SB		
1 @ 100	1 @ 100					31			



Grandam to Lot 144 | Sinclair Lady 0653 4465

146 SINCLAIR Q MOTHER 9EQ11
 REG: 19479731 | DOB: 02/22/19 | TATTOO: 9EQ11

Horse Butte 6141 of 3141
Loyning Equinox 7 18995523
 Jad Ester 3750

Sinclair Emulation XXP
Sinclair Q Mother 1XX13 7R4 16850954
 Sinclair Q Mother 7R4 E008

Horse Butte 1116 of 3116
 Shoshone Ester 3141
 M C C Logan
 Shoshone Ester 3128
 N Bar Emulation EXT#
 N Bar Primrose Y3051#
 Rito Revolve OR5
 N Bar Queen Mother 9955F

Individual Performance					EPD's				
BW	ADJ. WW	WR	ADJ. YW	YR	CED	BW	WW	MILK	YW
78	526	102	753	101	5	.1	39	20	67
Dam's Production				Mat		\$ Values			
WR	YR	SEN	SM	SW	SF	SG	SB		
6 @ 100	6 @ 102	0	45	36	44	31	75		



Great Grandam to Lot 146 | N Bar Queen Mother 9955F

145 SINCLAIR MS EMULOUS 9WG1
 REG: 19472541 | DOB: 02/28/19 | TATTOO: 9WG1

Sinclair Dynasty 3WCD7
Sinclair Dynasty 7WC17 18826235
 Sinclair Primrose 1G13 6E11#

Sinclair Emulation 4FX1
Sinclair Ms Emulous 7FT10 18805019
 Sinclair Ms Emulous 5RX18

Wandering CRK Dynasty JRM 2F#
 Sinclair Eriskay 2N1 7883#
 Sinclair Grass Master#
 Sinclair Primrose 6E11 Z194

Sinclair Emulation OF4
 Sinclair M Emulous 4ET1 D47#
 Sinclair Rito 2R1
 Sinclair Ms Emulous 9JP46

Individual Performance					EPD's				
BW	ADJ. WW	WR	ADJ. YW	YR	CED	BW	WW	MILK	YW
61	512	96	781	103	13	-2.4	32	23	57
Dam's Production				Mat		\$ Values			
WR	YR	SEN	SM	SW	SF	SG	SB		
1 @ 96	1 @ 103	9	56	35	49				



147 SINCLAIR PRIMROSE 9EQ6 4XX36
 REG: 19479725 | DOB: 02/20/19 | TATTOO: 9EQ6

Horse Butte 6141 of 3141
Loyning Equinox 7 18995523
 Jad Ester 3750

Sinclair Emulation XXP
Sinclair Primrose 4XX36 8P3 17821757
 Sinclair Primrose 8P3 E002

Horse Butte 1116 of 3116
 Shoshone Ester 3141
 M C C Logan
 Shoshone Ester 3128
 N Bar Emulation EXT#
 N Bar Primrose Y3051#
 N Bar Prime Time D806#
 N Bar Primrose 1985B

Individual Performance					EPD's				
BW	ADJ. WW	WR	ADJ. YW	YR	CED	BW	WW	MILK	YW
69	458	88	704	94	10	-1.2	29	20	54
Dam's Production				Mat		\$ Values			
WR	YR	SEN	SM	SW	SF	SG	SB		
4 @ 97	4 @ 101	11	67	25	38	37	75		

148 SINCLAIR BLACKIE 9XG7 6FV32
 REG: 19475150 | DOB: 03/16/19 | TATTOO: 9XG7

N Bar Emulation EXT#
Sinclair Exquisite 6X4 18505959
 Sinclair M Emulous 4ET1 D47#

Sinclair X-Changer 2FE9
Sinclair Blackie 6FV32 3U15 18486510
 Sinclair Blackie 3U15 1XF1

Emulation N Bar 5522#
 N Bar Primrose 2424
 N Bar Explosion TNT#
 N Bar Miss Emulous B514
 Sinclair Emulation 5522 XP#
 Sinclair Blackie 7V3 2P18
 N Bar Prime Time D806#
 Sinclair Blackie 1XF1 7V3

Individual Performance					EPD's				
BW	ADJ. WW	WR	ADJ. YW	YR	CED	BW	WW	MILK	YW
80	521	100	809	108	-2	3.0	37	19	69
Dam's Production				Mat		\$ Values			
WR	YR	SEN	SM	SW	SF	SG	SB		
2 @ 95	2 @ 101	14	57	22	50				



149 SINCLAIR ERISKAY 9EE3 6K2
 REG: 19472615 | DOB: 03/05/19 | TATTOO: 9EE3

Sinclair Emulation 5522 XP#
Sinclair X-Changer 5FE15 18152700
 Sinclair M Emulous 4ET1 D47#

Sinclair Broker 3RC33
Sinclair Eriskay 6K2 2XX7 18487749
 Sinclair Eriskay 2XX7 7V74

Emulation N Bar 5522#
 N Bar Primrose Y3051#
 N Bar Explosion TNT#
 N Bar Miss Emulous B514
 Sinclair Entrepreneur 8R101
 Sinclair Lady Ida 8XV12 C52#
 Sinclair Emulation XXP
 Sinclair Eriskay 7V74 707

Individual Performance					EPD's				
BW	ADJ. WW	WR	ADJ. YW	YR	CED	BW	WW	MILK	YW
63	497	95	796	106	11	-2.6	34	20	59
Dam's Production					\$ Values				
WR	YR	\$EN	\$M	\$W	\$F	\$G	\$B		
2 @ 95	2 @ 100	11	48	34	38				

153 SINCLAIR C PRIDE 9BT1 5FE2
 REG: 19475065 | DOB: 02/15/19 | TATTOO: 9BT1

Leachman Right Time#
BT Right Time 24J# 13360311
 Sitz Everelda Entense 1905

Sinclair Emulation 5522 XP#
Sinclair C Pride 5FE2 1TL21 18152607
 Sinclair C Pride 1TL21 7X34

N Bar Emulation EXT#
 Leachman Erica 0025
 Traveler 124 G D A R#
 Sitz Everelda Entense 1791#
 Emulation N Bar 5522#
 N Bar Primrose Y3051#
 Sinclair Timeless 8BA4#
 Sinclair C Pride 7X34 K325#

Individual Performance					EPD's				
BW	ADJ. WW	WR	ADJ. YW	YR	CED	BW	WW	MILK	YW
61	496	95	730	97	8	-1.2	32	22	57
Dam's Production					\$ Values				
WR	YR	\$EN	\$M	\$W	\$F	\$G	\$B		
3 @ 96	3 @ 99	8	51	32	38	26	64		

150 SINCLAIR LADY IDA 9EE5 6TL11
 REG: 19472611 | DOB: 03/08/19 | TATTOO: 9EE5

Sinclair Emulation 5522 XP#
Sinclair X-Changer 5FE15 18152700
 Sinclair M Emulous 4ET1 D47#

Sinclair Timeless 8BA4#
Sinclair Lady Ida 6TL11 4AR3 18487779
 Sinclair Lady Ida 4AR3 2D29

Emulation N Bar 5522#
 N Bar Primrose Y3051#
 N Bar Explosion TNT#
 N Bar Miss Emulous B514
 Sinclair IN Time 6BT39
 Sinclair Blackbird 2P8 7079#
 Sinclair Emulation OA2
 Sinclair Lady Ida 2D29 5PV38

Individual Performance					EPD's				
BW	ADJ. WW	WR	ADJ. YW	YR	CED	BW	WW	MILK	YW
85	518	99	740	98	4	.3	29	22	50
Dam's Production					\$ Values				
WR	YR	\$EN	\$M	\$W	\$F	\$G	\$B		
2 @ 101	2 @ 93	14	60	27	22	26	48		

154 SINCLAIR PRIMROSE 9NI9 7WC31
 REG: 19475171 | DOB: 02/01/19 | TATTOO: 9NI9

N Bar Emulation EXT#
N Bar Nitro 12354657
 N Bar Kinochtry Beauty 4288

Sinclair Dynasty 3WC07
Sinclair Primrose 7WC31 3R06 18826254
 Sinclair Primrose 3R06 9X64

Emulation N Bar 5522#
 N Bar Primrose 2424
 Ankonian Cornhusker#
 N Bar Kinochtry Beauty 2364
 Wandering CRK Dynasty JRM 2F#
 Sinclair Eriskay 2N1 7883#
 Sinclair Original 8R104
 Sinclair Primrose 9X64 B1#

Individual Performance					EPD's				
BW	ADJ. WW	WR	ADJ. YW	YR	CED	BW	WW	MILK	YW
66	522	100	786	105	5	.3	34	20	57
Dam's Production					\$ Values				
WR	YR	\$EN	\$M	\$W	\$F	\$G	\$B		
1 @ 100	1 @ 105	11	61	30	53				

151 SINCLAIR BLKBIRD 9EE13 6RV15
 REG: 19472609 | DOB: 03/17/19 | TATTOO: 9EE13

Sinclair Emulation 5522 XP#
Sinclair X-Changer 5FE15 18152700
 Sinclair M Emulous 4ET1 D47#

Sinclair Rito 9R7
Sinclair Blkbird 6RV15 2XF4 18526824
 Sinclair Blkbird 2XF4 0G3

Emulation N Bar 5522#
 N Bar Primrose Y3051#
 N Bar Explosion TNT#
 N Bar Miss Emulous B514
 Rito Revolve OR5
 Sinclair K BTY 6PV5 25F3
 Sinclair Emulation Line X
 Sinclair Blkbird 0G3 6PV58

Individual Performance					EPD's				
BW	ADJ. WW	WR	ADJ. YW	YR	CED	BW	WW	MILK	YW
79	516	99	734	98	1	2.0	43	19	69
Dam's Production					\$ Values				
WR	YR	\$EN	\$M	\$W	\$F	\$G	\$B		
2 @ 104	2 @ 105	11	66	36	36	25	61		

155 SINCLAIR PRIMROSE 9OC9 5TA15
 REG: 19521260 | DOB: 02/22/19 | TATTOO: 9OC9

N Bar Emulation EXT#
O C C Great Plains 943G# 13092912
 Dixie Erica of CH 1019

Sinclair Preview 2TL6
Sinclair Primrose 5TA15 2D9 18154263
 Sinclair Primrose 2D9 8PV95

Emulation N Bar 5522#
 N Bar Primrose 2424
 PBC 707 1M F0203#
 Dixie Erica of CH 615
 Sinclair Timeless 8BA4#
 Sinclair K Bty OA3 7XT55
 Sinclair Fortunate Son#
 Sinclair Primrose 8PV95 4F1

Individual Performance					EPD's				
BW	ADJ. WW	WR	ADJ. YW	YR	CED	BW	WW	MILK	YW
74	520	100	728	96	8	-.6	35	22	58
Dam's Production					\$ Values				
WR	YR	\$EN	\$M	\$W	\$F	\$G	\$B		
2 @ 97	1 @ 96	14	56	35	46	24	70		

152 SINCLAIR PRIMROSE 9EE20 6RV5
 REG: 19472610 | DOB: 03/27/19 | TATTOO: 9EE20

Sinclair Emulation 5522 XP#
Sinclair X-Changer 5FE15 18152700
 Sinclair M Emulous 4ET1 D47#

Sinclair Rito 9R7
Sinclair Primrose 6RV5 3IJ3 18526809
 Sinclair Primrose 3IJ3 ORS12#

Emulation N Bar 5522#
 N Bar Primrose Y3051#
 N Bar Explosion TNT#
 N Bar Miss Emulous B514
 Rito Revolve OR5
 Sinclair K BTY 6PV5 25F3
 Sinclair Emperor OXT1
 Sinclair Primrose ORS12 6X40

Individual Performance					EPD's				
BW	ADJ. WW	WR	ADJ. YW	YR	CED	BW	WW	MILK	YW
72	536	103	733	98	7	-.3	41	18	63
Dam's Production					\$ Values				
WR	YR	\$EN	\$M	\$W	\$F	\$G	\$B		
2 @ 101	1 @ 98	14	67	38	35				

156 SINCLAIR ENCHANTRESS 9ON5
 REG: 19475121 | DOB: 03/23/19 | TATTOO: 9ON5

Basin Rainmaker 654X#
Sinclair Cloud Peak 504 18313179
 Sinclair Eriskay 2N1 7883#

Sinclair Timeless 8BA4#
Sinclair Enchantress 5TL26 18154075
 Sinclair Enchantress 3R13

Basin Rainmaker D S 380U#
 Basin Bardolene 423U
 D H D Traveler 6807#
 Papa Eriskay 7883
 Sinclair IN Time 6BT39
 Sinclair Blackbird 2P8 7079#
 Rito Revolve OR5
 Sinclair Enchantress 9XX3

Individual Performance					EPD's				
BW	ADJ. WW	WR	ADJ. YW	YR	CED	BW	WW	MILK	YW
75	539	103	760	101	8	-1.0	33	27	67
Dam's Production					\$ Values				
WR	YR	\$EN	\$M	\$W	\$F	\$G	\$B		
2 @ 99	2 @ 103	6	60	35	56	31	87		

157 SINCLAIR NALIE 9FF3 7RC6
REG: 19475290 | DOB: 02/23/19 | TATTOO: 9FF3

Sinclair X-Changer 2FE9
Sinclair Piney Creek 5FV5 18295789
Sinclair Ms Emulous 8F12

Sinclair Entrepreneur 8R101
Sinclair Nalie 7RC6 4XX19 18982461
Sinclair Nalie 4XX19 9JP4

Sinclair Emulation 5522 XP#
Sinclair Blackie 7V3 2P18
Emulation N Bar 5522#
N Bar Miss Emulous A404
R R Rito 707#
N Bar Kinochtry Beauty Z1925
Sinclair Emulation XXP
Sinclair Nalie 9JP4 7F1#

Individual Performance					EPD's				
BW	ADJ. WW	WR	ADJ. YW	YR	CED	BW	WW	MILK	YW
58	531	102	747	100	10	-1.9	31	17	47
Dam's Production					\$ Values				
WR		YR		SEN	SM	SW	SF	SG	SB
1 @ 102		1 @ 100		16	71	28	27		

160 SINCLAIR ENCHANTRESS 9XF8
REG: 19475356 | DOB: 03/27/19 | TATTOO: 9XF8

Sinclair Emulation XXP
Sinclair X-Plus 6XX5 18506487
Sinclair Ms Emulous 8F12

Sinclair Emperor 0XT51
Sinclair Enchantress 6X015 18486467
Sinclair Enchantress 2V24#

N Bar Emulation EXT#
N Bar Primrose Y3051#
Emulation N Bar 5522#
N Bar Miss Emulous A404
Sinclair Extra 4X13#
Sinclair Blkbird 70C10 J472
N Bar Emulation Ext A1747
N Bar Enchantress S C C 2F8

Individual Performance					EPD's				
BW	ADJ. WW	WR	ADJ. YW	YR	CED	BW	WW	MILK	YW
65	519	99	764	101	8	-1.5	35	19	61
Dam's Production					\$ Values				
WR		YR		SEN	SM	SW	SF	SG	SB
1 @ 99		1 @ 101		13	75	32	43		

158 SINCLAIR LADY IDA 9XR9 5TL52
REG: 19475388 | DOB: 03/11/19 | TATTOO: 9XR9

N Bar Emulation EXT#
Sinclair Emulation X 8X17 16027265
Rito Majesty 5A78 of 809

Sinclair Timeless 8BA4#
Sinclair Lady Ida 5TL52 7X26 18154100
Sinclair Lady Ida 7X26 B154

Emulation N Bar 5522#
N Bar Primrose 2424
Rito Excel 809#
Ruth 657C of B V
Sinclair IN Time 6BT39
Sinclair Blackbird 2P8 7079#
N Bar Emulation EXT#
N Bar Lady Ida X2912

Individual Performance					EPD's				
BW	ADJ. WW	WR	ADJ. YW	YR	CED	BW	WW	MILK	YW
62	515	98	736	98	14	-4.0	26	20	47
Dam's Production					\$ Values				
WR		YR		SEN	SM	SW	SF	SG	SB
3 @ 101		1 @ 98		14	51	25	42	25	67



Great Grandam to Lot 160 | Sinclair Enchantress 2F8



Great Grandam to Lot 161 | N Bar Kinochtry Beauty Z1925

161 SINCLAIR K BTY 9UF7 8R8
REG: 19472546 | DOB: 04/05/19 | TATTOO: 9UF7

Sinclair Exactly 4U2
Sinclair Black Iron 7UR26 19016137
Sinclair Erica 2FE2 8BT12

Rito Revolve 0R5
Sinclair K Bty 8R8 08F3 16027349
Sinclair K Beauty 08F3 E118

Sinclair Executive 9XV2
Sinclair Lady 0R109 03S3
Sinclair Emulation 5522 XP#
Sinclair Erica 8BT12 A18
R R Rito 707#
Ideal 1456 of 8103 8114
Emulation N Bar 5522#
N Bar Kinochtry Beauty Z1925

Individual Performance					EPD's				
BW	ADJ. WW	WR	ADJ. YW	YR	CED	BW	WW	MILK	YW
81	593	112	787	104	-2	3.1	50	15	77
Dam's Production					\$ Values				
WR		YR		SEN	SM	SW	SF	SG	SB
10 @ 98		6 @ 98		8	70	35	40	25	65

159 SINCLAIR ENCHANTRESS 9UE5
REG: 19475365 | DOB: 03/15/19 | TATTOO: 9UE5

Sinclair Deliverance 5U38
Sinclair Delivery 7UD6 18829772
Sinclair Delia 1FE18 404

Sinclair Rito Legacy 3R9
Sinclair Enchantress 8RL37 16026931
Sinclair Enchantress 5GT2

Sinclair Executive 9XV2
Sinclair Delia 2F6 404
Sinclair Emulation 5522 XP#
Octoraro Delia 404
R R Rito 707#
Ideal 4465 of 6807 4286
Gardens Transition 7205 S1
S C C Enchantress 3F3 X412

Individual Performance					EPD's				
BW	ADJ. WW	WR	ADJ. YW	YR	CED	BW	WW	MILK	YW
82	577	109	774	102	-1	2.9	38	17	59
Dam's Production					\$ Values				
WR		YR		SEN	SM	SW	SF	SG	SB
10 @ 101		4 @ 104		15	72	26	24	23	46

162 SINCLAIR MS EMULOUS 9SG26
REG: 19475329 | DOB: 04/03/19 | TATTOO: 9SG26

Sinclair Vision 3SX12
Sinclair Elation 6SX1 18488262
Sinclair C Pride 2G72 7X34

Sinclair Vision 3SX12
Sinclair Ms Emulous 6SX30 18770789
Sinclair Ms Emulous 1XT2

Sinclair Vision X 857
Sinclair K Bty 0F1 2V3
Sinclair Grass Master#
Sinclair C Pride 7X34 K325#
Sinclair Vision X 857
Sinclair K Bty 0F1 2V3
Sinclair Extra 4X13#
N Bar Miss Emulous Y3559

Individual Performance					EPD's				
BW	ADJ. WW	WR	ADJ. YW	YR	CED	BW	WW	MILK	YW
64	527	101	775	103	10	-2.2	29	23	59
Dam's Production					\$ Values				
WR		YR		SEN	SM	SW	SF	SG	SB
2 @ 101		2 @ 100		7	63	29	50		



79 COMMERCIAL REPLACEMENT HEIFERS

Notice: **The Commercial heifers will NOT** be at the sale site. They will sell via video. The commercial heifers are home-raised and are selected right out of the middle of the registered replacement heifer pen.

All heifers will be vaccinated with Virashield 6 VL5 Somnus and administered pour-on.

Videos will be available on Sinclaircattle.com, billpelton.com or by request. The heifers are located at Veltkamp Livestock Manhattan, MT and sell with the option to continue being developed and AI'd there, at cost. The buyer has the option to purchase **5 or more heifers on a gate cut basis**. Semen available for commercial heifers at a reduced rate. Contact the Sinclair Cattle Company team for details. Commercial heifer trucking can be arranged.



SINCLAIR SEMEN SALES.

Sinclair Cattle Company has Semen for sale on a wide variety of Angus sires. Please see our Sires section of our website for further information in the upcoming future. If you desire to use any Sinclair Sire to AI your herd with this spring, give one of the Sinclair Team a call today and we will be happy to discuss your options. Volume and commercial discounts available.

LIKE A BOSS

Every great sire produces a son for the next generation.



**SEMEN
AVAILABLE**

SINCLAIR PLAINS BOSS 5B02 | REG 18152044 | SINCLAIR PATRIARCH/EXT A1747/5522/EXT
Sons will highlight the March 28th 2020 Sinclair Cattle Co Bull Sale at Buffalo WY. This exciting bull was the top selling bull in the 2016 Sinclair sale going to GBT Angus in SK.

A true performance and maternal sire, 5B02 has combined progeny ratios: CE @1.1 BW@101 WW@102 YW@104 SC @101 IMF @103 REA @100. He charts an excellent birth to yearling spread and carries carcass traits that excel in marbling, reduced backfat and consistent ribeye charting a 149 \$B.

Plains Boss is backed by two of the premier proven power cows in the Sinclair herd "7V19" and "7OC7". These magnificent Lady Ida's will both become foundation donors this spring after calving, to move the Sinclair program forward. These cows define maternal excellence, soundness and longevity, beautiful phenotype and performance well into their teens.

A phenotypically excellent sire, 5B02 has the length, muscle, thickness, structural soundness, and athleticism that will produce top herdsire prospects. His daughters will thrive under harsh range conditions for many years to come while producing progeny that will excel in the feedlot and on the rail.

Introducing Boss's Son: Sinclair Foreman 7L27 Reg: 18841686 Sinclair Plains Boss 5B02/EXT/Moderation/6807.

7L27 is an intriguing real performance sire that is long as a freight train and is packed full of red meat and muscle. He charts an individual 99 BR 117 WR and 119 YR 141 IMF and an Adj WW of 729 lbs. His productive dam's combined ratios are WR 4 @108, YR 3@106. His sterling pedigree is stacked full of the greatest cows in the breed. 7L27, like his sire, is paving the way to progress and planned success in your herd.

Plains Boss and Foreman 7L27 are exciting Emulation sires that are an outcross to many popular lines of genetics while adding maternal goodness, longevity, structural soundness and udder quality.



2020
PRODUCTION SALE | MARCH 28

CONVENIENCE OPTIONS

HOW TO PARTICIPATE AS AN ABSENTEE BUYER

We have made preparations to bid and buy livestock through Pelton Livestock's Sale Day Conference Call.

SALE DAY CONFERENCE CALL



It's as easy as

1. Pre Register your buyer number 406-671-5100
2. Receive toll free call in # and pin
3. Get last minute instructions for call

Give Bill Pelton a call in advance

"Our goal is to get you in the seats but if you can't make it on sale day, we're fixin' to get you On The Line"



406.671.5100 bill@billpelton.com www.BILLPELTON.COM  

This sale will be broadcast live on the internet.



Never Miss An Auction Again!

Watch & Bid online for FREE!

Visit www.DVAuction.com and Register Today

For General Questions Please Contact our Office:

402-316-5460 or support@dvauction.com

BROADCASTING ON



LIVE CATTLE
AUCTIONS

1. Go to www.CattleUSA.com
2. First time users must register as a viewer.
3. In the 'Live Auctions' tab select the sale that you wish to register as a buyer (only if you wish to buy) and click the 'Submit' button.
4. Fill out the required contact and banking information then click the 'Proceed' button.
5. After you have been approved as a buyer you will receive a confirmation email. On sale day, log in and click the green 'View' button for our sale. You will have the bid console available to place your online bids. Click on 'Bid Now' to place a bid.
6. The bid received by the auctioneer will be the amount showing in the 'Price' box in the bid console.

High speed internet required for viewing & bidding.
Questions call 307-684-0789

INSURANCE

STOCKMANS INSURANCE AGENCY LLC

Livestock Insurer | Equine & Bovine

Licensed Since 1989

Coverage

Mortality, Loss of Use, Major Medical

For more information and rates,

contact Bill Pelton 406-671-5100

"We partner with you to provide you the protection you want and need."



Thank You

We would like to say thank you and recognize everyone for their hard work and for an outstanding "job well done" throughout the year.

Dan and Shelly Reinke

Mike and Diane Roduner

Boe and Jackie Roduner

Thad and Heidi Stoltz

John and Lori Hansen

Phil and Kris Veltkamp and crew
Veltkamp Livestock, Bull and heifer
development

Dr. Brian Rowe – Semen Testing

Matt Lane – Carcass Ultrasound

Gary Bichsel – Trucking

Mike and Carla Harper

Kate Roberts – Photography

Caryl Cammack

Caryl & Company – Catalog Design and
Advertising

Dr. Tad Tipton

Black Tooth Large Animal Veterinary Services

Dr. Teresa Bessler -Buffalo Veterinary Clinic

Everyone who took the time and made
the effort to attend our sale.

Our loyal customers


SINCLAIR
CATTLE COMPANY
PO Box 1158
Buffalo, WY 82834

2020

PRODUCTION SALE | MARCH 28

2020

• STAYING TRUE TO THE LEGACY •

